



District Governor Carol Burdette
P.O. Box 493
Pendleton, SC 29670
864-934-5143
DG2018@Rotary7750.org

MARCH 2019 ■ WWW.ROTARY7750.ORG

MARCH: Water and Sanitation Month

APRIL: Maternal and Child Health

7750

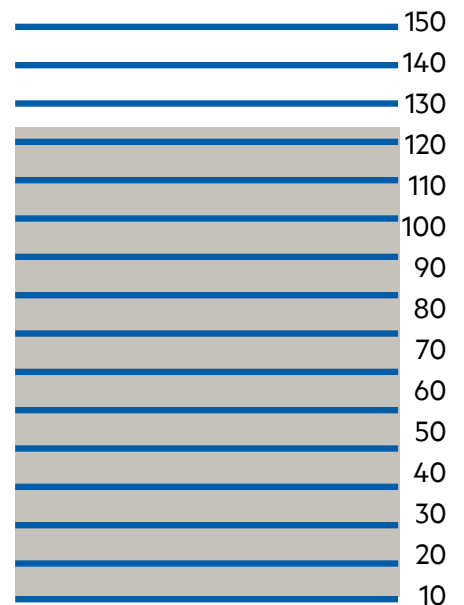
ROTARY INTERNATIONAL



Charles Ford and Eddie Lukowski, members of the Rotary Club of Lake Wylie, assemble picnic tables for the local Y. More on page 5.

CART Challenge Progress:

\$122,174.54 OF \$150,000



Page 3 has way too much red. That is not good. Take a look.

DISTRICT CONFERENCE 2019 | MAY 17-19 IN CLEMSON

Keynote speaker is Dabo Swinney, coach of the National Champions Clemson Tigers.

Membership Notes

What page 3 means for your club's continued success

Factor in the attrition rate when planning for club growth

BY PDG ED IRICK

District Membership Chair

Do you know how many new members you need to reach your membership goal between now and the end of the year? If you have not factored in expected attrition, you will be surprised.

The average attrition rate for clubs in District 7750 is around 14-15% each year. At the beginning of this year your own club's attrition rate over the previous years was used to determine how many new members the club needed to achieve its goal. This attrition rate has historically been very reliable in predicting actual attrition. In fact, you can count on it.

Let's say your goal is 40 members and you currently have 35. You think you only need 5 more members to reach your goal. However, your expected attrition is 6. At this point in time, you have experienced only 2 terminations meaning you can reason-

ably expect to lose 4 more before the end of the year. Considering this, you now need to bring in NINE more new members to ensure you reach your goal.

Failing to factor in forecasted attrition may mean you do not reach your goal. This is especially important at this time of the year because many clubs are at plus or minus 2 of their goal and begin to think they have it made. Those at +2 may tend to think all they have to do is coast in to make the goal. Those at -2 may think we can certainly get 2 more members to reach our goal. Attrition happens all the way through midnight June 30, and will get you. Do not get complacent and fail to account for attrition. End the year on a positive note.

Study that chart on page 3 for your club's YTD membership goal achievement, attrition yet to occur and number of new members needed for success.

An AH-HA moment: SHARE what you do

BY IPDG ED IRICK

D7750 Membership Chair

864-420-1052 | dg2017@rotary7750.org

I had an aha moment at a recent meeting of my Rotary club. The presentation was about the upcoming Peace and Conflict Resolution Conference the Rotary Club of Greenville is hosting for the District. As I sat there listening, I began thinking that this is what Rotary is all about. It is an incredible network of people committed to "Service Above Self."

I was struck by the impressive list of presenters and the topics to be discussed.

Also notable is the fact that the conference is not only for Rotarians. It is for the public as well.

To gain a larger audience, scholarships are available to pay for local law enforcement agencies, other first responders, Interact Clubs, Rotoract Clubs, schools, and other organizations that are interested in attending.

What a great gesture this is by Rotary to educate as many people as possible on subjects related to peace and conflict resolution.

This is a perfect example of how membership and public image work together to strengthen your club.

This program also made me think about the good the other clubs in the District are doing and how we need to get the word out on Rotary.

So whenever you think about the good your club does and how it impacts your community and the world, let others know.

There are other like-minded people out there in your communities who are looking for a way to channel their passion to serve. Introduce them to Rotary and invite them to a meeting. Tell them about the good your club does. Be a proud Rotarian and share Rotary with others.

MEMBERSHIP DEVELOPMENT: DECEMBER FIGURES

39 New Members **27** Terminated Members (0 deceased) **+12** Net for month

These figures are from the District and Club database and are not official RI numbers.

District 7750 Membership Report								
2/25/2019								
			Over				OK	
			At				New Needed	
			Under					
Club	Goal	Current Membership	Over/Under Goal	Annual Avg. Attrition	Attrition to Date	Attrition to Go	New Members to Reach Goal	Avg. Attendance
Abbeville	50	56	6	7	1	6	0	72%
Aiken	190	185	-5	24	19	5	10	74.6%
Aiken Sunrise	44	35	-9	7	6	1	10	68.7%
Anderson	83	78	-5	13	4	9	14	74.1%
Batesburg-Leesville	21	17	-4	2	1	1	5	45.59%
Blacksburg	17	16	-1	2	2	0	1	74.29%
Chester	58	55	-3	6	3	3	6	0%
Clemson	110	93	-17	10	5	5	22	60.5%
Clemson-Calhoun	34	32	-2	4	1	3	5	81.5%
Clinton	28	27	-1	5	2	3	4	51%
Clover	20	27	7	3	1	2	0	76.8%
Easley	57	61	4	6	1	5	1	72.3%
E-Club of The Carolinas	35	27	-8	9	1	8	16	87.5%
Emerald City	72	71	-1	6	5	1	2	72.7%
Fort Mill	90	85	-5	15	10	5	10	32.7%
Fountain Inn	28	27	-1	8	1	7	8	83.6%
Gaffney	82	78	-4	11	1	10	14	72.5%
Golden Strip Sunrise	17	13	-4	2	2	0	4	63%
Greater Anderson	80	79	-1	8	1	7	8	59.3%
Greater Greer	20	13	-7	2	2	0	7	42.4%
Greenville	286	242	-44	50	31	19	63	38.6%
Greenville Breakfast	18	15	-3	5	2	3	6	56.7%
Greenville City Center	47	54	7	10	5	5	0	50.3%
Greenwood	120	113	-7	15	12	3	10	58.15%
Indian Land	36	23	-13	8	5	3	16	0%
Inman	25	21	-4	3	2	1	5	75%
Lake Wylie	30	27	-3	4	1	3	6	79.2%
Lancaster	68	63	-5	7	6	1	6	67.46%
Lancaster Breakfast	57	55	-2	12	5	7	9	63.3%
Laurens	56	54	-2	8	3	5	7	76.5%
Mauldin	40	28	-12	5	3	2	14	66.7%
Newberry	88	74	-14	8	7	1	15	75.9%
North Augusta	24	23	-1	2	0	2	3	52.2%
North Spartanburg	41	37	-4	7	3	4	8	70.2%
Pickens	44	46	2	5	5	0	0	66.4%
Pleasantburg	52	46	-6	5	3	2	8	57.9%
Rock Hill	100	80	-20	19	11	8	28	35.48%
Seneca	55	46	-9	5	3	2	11	57.1%
Seneca Golden Corner	26	24	-2	3	2	1	3	64.7%
Simpsonville	55	43	-12	8	9	0	12	93.7%
Spartanburg	220	195	-25	20	9	11	36	67.4%
Spartan West	35	31	-4	4	3	1	5	42.5%
The Foothills, Travelers Rest	21	14	-7	3	5	0	7	47.22%
The Reedy River Greenville	45	38	-7	10	6	4	11	50%
Twin City of Batesburg-Leesvi	23	20	-3	2	3	0	3	74.6%
Union	47	50	3	6	1	5	2	57.2%
Walhalla	36	34	-2	5	1	4	6	62.3%
Westminster	38	35	-3	8	2	6	9	55.55%
Winnsboro	30	27	-3	7	3	4	7	66%
York	41	35	-6	7	3	4	10	60%
		2668	-310		252	192	511	

This is a new membership chart intended to focus you on how your club is doing towards achieving its membership goal and the impact that anticipated attrition has on that achievement. If your club fails to factor in expected attrition, you will be surprised at where you stand.

From DG Carol

THANKFUL

Our literacy efforts are making a difference (locally and beyond)

I can't tell you how thankful I was when District Literacy Co-Chair Jean Mahaffey shared a spreadsheet showing our clubs literacy initiatives.

We have clubs who are donating books to children, providing dictionaries to children, have Little Free Libraries, sponsor essay writing contests, and provide scholarships for academic success.

We have Rotarians reading to children and clubs who make monetary contributions for community literacy projects.

Because of the importance of reading, this work is meaningful to our communities throughout the district. I often say, "Education is the key that unlocks the prison of poverty; and it is for sure that reading is the very foundation of education." Providing extra help for our children and the tools needed for adult education, we can ensure that the rates of those who are illiterate in our state will decrease dramatically. It is third grade reading scores that prison officials use to determine the number of beds needed twenty years later.

Your work in the area of literacy is making a difference! Also, we have some clubs who are making a difference by supporting the Partners In Literacy Haiti movement...we are people of action making our communities, the world and ourselves better!

URGENT

Our membership efforts need a push (maybe a big one)

Now for the urgent part...please look at the membership chart on page 2. I want to be inspirational, but with a plea to get to work! I know that you've been bringing in members but it seems that your clubs lose members as quickly as you get new ones.

I have to ask you to examine **WHY IS THAT???**

As we have entered the home stretch of this year, I want each of your clubs to end on a positive note—that means with membership gains. So I am challenging you to start inviting friends, family members and co-workers to Rotary, offering them the great opportunity that someone offered you. Encourage your members to attend Rotary Leadership Institute because they will be 50% more likely to stay in Rotary.

We all know that clubs look to dump off members who haven't been paying or attending as June rolls around, but instead start calling them and showing them some attention. Find out what is going on in their lives and work to keep them in Rotary.

Lastly, if you are continuously losing members, start asking why and start working on providing a great Rotary "experience." Let's meet our membership goals for the year.

Thank you for all you do for Rotary.
Let's finish strong and celebrate at the
All-Club Conference in Clemson
on May 17, 18 & 19 with opening speaker, Dabo Swinney!



**THE EBERLY FAMILY
ENJOYING
THE SUNSHINE AT
CLOVER Y**

Rubin, Benjamin, Madeline, Emmaline, Adrienne and Stephanie Eberly have a place to collect themselves before and after using the Y, thanks to the 15 outside picnic tables donated and assembled by the Lake Wylie Rotary Club.



A couple of visitors to the Y sit down for a chat at the tables bought and assembled by the Lake Wylie Rotary Club.

Rotary
LAKE WYLIE



Lake Wylie buys, assembles tables for local Y

BY ANNE VIOLANTI

Lake Wylie Rotary President Nominee

The Rotary Club of Lake Wylie recently purchased, assembled and donated picnic tables for the Clover School District Y for use by students and community members.

These eight new tables are an addition to the seven tables purchased, assembled and donated last year.

There are now a total of 15 tables, which include 3 handicap accessible tables.

The funds used to purchase the tables came from generous donations from the community, local businesses, fundraisers by the Lake Wylie

Rotarians (including the recent \$5,000 Cash Raffle), and a District Rotary Foundation grant.

Deadline for April newsletter is **March 25.**

Send items to newsletter editor Sue Poss, editor@rotary7750.org.

Articles received after March 25 will be used in May.



SECOND PAUL HARRIS

Craig Hazlewood received his second Paul Harris pin from York president Amy Hagner.



YORK ROTARY MEMBERS ENJOY CASUAL NIGHT TO FELLOWSHIP

York Rotary member Jim Hodnett and his wife Pat hosted York Rotary Club members and invited guests for an informal evening of relaxation and socialization. (l to r): Grier & Crystal Sandifer, Daniel & Jane Harshaw, Suzanne Edson. Lower photo: Pamela & Chuck DeLaBarre



March is Water & Sanitation Month

Through water, sanitation, and hygiene (WASH) programs, Rotary's people of action mobilize resources, form partnerships, and invest in infrastructure and training that yield long-term change. The Rotary Foundation is changing the world by providing grants for projects and activities around the globe and in your own backyard:

- **Rotary-USAID Partnership:** Rotary has partnered with the United States Agency for International Development in Ghana, Madagascar, and Uganda to implement sustainable, long-term programs to improve water supplies, sanitation, and hygiene.
- **WASH in Schools Target Challenge:** Rotary has challenged our members to develop sustainable water, sanitation, and hygiene education projects in five countries: Belize, Guatemala, Honduras, India, and Kenya.
- **WASH projects:** Since 2013, The Rotary Foundation has invested in more than 1,000 WASH projects in more than 100 countries. Through grants from The Rotary Foundation and fundraising by Rotary clubs, our volunteers have supported water purification, hygiene education, latrine construction, and waste management.

\$24

is all it takes to provide one person with safe water

110

schools in Ghana have better sanitation and hygiene due to Rotary-USAID partnership

2030

is the year Rotary hopes to finish providing everyone with safe water, sanitation, and hygiene

Your gifts to the Rotary Foundation make these things happen.



Putting the “Civil” back in Civil Discourse at the Rotary Peace and Conflict Resolution Conference

BY KATHY MCAFEE

Rotary Club of Greenville

Are you tired of having heated arguments with your family and friends about topics where you have differing opinions and deep-seated beliefs? Do you resort to simply avoiding those topics altogether in order to prevent a heated exchange and keep whatever peace you can? Well, my fellow Rotarians, we have good news. This situation no longer needs to bring you anguish. By learning and practicing the skills of civil discourse, you have can respectful, civilized and engaging conversations with almost anyone on any topic.

This is just one of the benefits you will gain if you attend the [Peace and Conflict Resolution Conference](#) on Friday, May 3, 2019 at the Greenville Convention Center. Hosted by the Rotary Club of Greenville, this public service program aims to fulfill one of Rotary’s six areas of service: Peace and Conflict Prevention/Resolution. Over 400 members of the community will attend this empowering conference, and we want as many Rotarians there as possible, including you ([Click here to register](#)).

KEYNOTE SPEAKER HIGHLIGHT

One of the highlights of the Peace and Conflict Resolution Conference program will be Jessica Shryack’s interactive session called “Living Room Conversations: An Experimental Session in Civil Discourse.”

The goal of this session is to practice curiosity and active listening when confronted by people with differing or opposing ideas. Jessica will introduce us to the conversational agreements and structure of the [Living Room Conversations \(LRC\) model](#).

Conference attendees will be skillfully guided through the LRC model creating the opportunity to see other points of view, while sharing our own views on sensitive topics. An eye-opening experience, you will walk away being better able to respect, relate, and connect with more people in a greater variety of topics.

By pushing through the stereotypes, emotions, and triggers that so often get in the way, you will regain opportunities to listen, learn and converse with others respectfully. The skills and experience that you will have during this session at the Peace and Conflict Resolution Conference will help each of us live up to the Rotary four-way test.



About Jessica Shryack: She holds a doctorate in educational psychology and a graduate minor in public health and master’s degree in counseling. She has worked in higher education for more than 15 years, teaching psychology, helping first-generation college students succeed in college, and supporting leaders in organizational continuous improvement. Since 2015, Jessica has been a leader in bringing Living Room Conversations to employees in higher education settings in Minnesota and to other professionals at national and regional conferences. She loves being able to facilitate meaningful, face-to-face conversations between people with differing views and experiences, especially around difficult topics like race and privilege. You can find more information about Jessica on LinkedIn.

Friday, May 3

Greenville Convention Center

Find more information and to register:

www.PeaceAndConflictResolution.com.

The cost for Rotarians is \$35, non-Rotarians, \$45.



Rotary Action Group News

BY PDG BARBARA SHAYEB-HELOU, BSH6890@AOL.COM

D7750 Fellowship and RAGS Chair

The RI Board has approved a recommendation that Action Groups be allowed to establish themselves as Charitable entities, similar to Clubs and Districts. Also, membership is available to Rotaract Clubs, Rotary Districts and Rotary Clubs..

The Rotary Action Group for Peace sees the 4-Way Test as the Platinum Rule of Conflict Transformation vs. Conflict Resolution. An example is ethnic conflicts can be transformed into peaceful outcomes. Also it differs from conflict resolution and conflict management approaches in that it recognizes "that contemporary conflicts" require more than reframing of positions and the identification of win-win outcomes.

The benefits of all concerned must be considered into the plan, the vision, the mission, and the strategy. That is true for little children quarreling on the playground and large nations who have large weapons pointed at each other.

Join the Rotary Action Group for Peace and learn more.

The Rotary Action Group Against Slavery (RAGAS) sees global slavery and Human Trafficking as one of the greatest evils of our time. Humans are traded like cattle, stripped of all dignity, denied basic human rights as part of an industry that generates profits estimated at \$150 billion dollar annually. Most victims are women and children who are victims of forced sexual exploitation.

Read more: www.ragas.online

If travelling to the RI Convention you need to learn about the Rotary Wine Appreciation Fellowship. (I am a life member.) Before going, study up on German wines. There are thirteen wine growing regions in Germany. Most are in the Southwestern section of the country. There are pre and post tours to these regions. Also there are wine dinners on Monday, Tuesday and Wednesday evenings. Contact Claire Larson [clarson@mail,telpac.pt](mailto:clarson@mail.telpac.pt) for reservations. And join the Fellowship to stay up tp date on all things wine.

GOLDEN CORNER HEARS ABOUT VOC-ED

Tim Jared, campus coordinator for Tri-County Technical College's Oconee County campus, recently updated the Golden Corner Rotary Club on one of the most unique operations in education and industry in the state and country. Tri-County Technical College is part of the Highway 11 project that includes the college's campus, the School District of Oconee County's new Fred P. Hamilton Career Center plus Oconee County's economic development projects that feature new industries on the site. Jared, right, noted students can receive specialized training in high school, college and on the job all in one location Pictured from left are Golden Corner Rotarian Lorraine Harding, club president Steve Rushton and Jared.



RLI may help your club become more dynamic by helping your members better understand how your club fits into the greater Rotary world.

Upcoming RLI Classes

North Carolina and South Carolina Schedule

To register go to www.rli33.org

Saturday, March 2	Anderson, SC	I, II, and III
Saturday, March 2	Jacksonville, NC	I, II, and III
Saturday, March 9	Sparta, NC	I only
Saturday, March 9	Hilton Head, SC	I, II, and III

****Special Note Four for the price of three. - If your club sends four members to the same location then \$95 will be reimbursed to the club after the session has been completed.****

CART Giving toward \$150,000 challenge

April 1, 2018-February 27, 2019

Club	Gifts	Members 7/1/18	Per Capita	Club	Gifts	Members 7/1/18	Per Capita
Abbeville	\$571.00	45	12.69	Lake Wylie	\$1,650.00	23	71.74
Aiken	\$6,087.42	180	33.82	Lancaster	\$2,173.78	64	33.97
Aiken High Interact	\$1,300.00			Lancaster Breakfast	\$600.00	56	10.71
Aiken Sunrise	\$2,542.51	39	65.19	Laurens	\$2,000.00	49	40.82
Anderson	\$3,433.13	74	46.39	Mauldin	\$177.00	30	5.90
Batesburg-Leesville	\$258.98	17	15.23	Newberry	\$980.93	77	12.74
Blacksburg	\$200.00	15	13.33	North Augusta	\$1,121.04	21	53.38
Chester	\$346.27	53	6.53	North Spartanburg	\$150.00	36	4.17
Clemson	\$5,300.12	94	56.38	Pickens	\$1,000.00	43	23.26
Clemson-Calhoun	\$2,617.32	28	93.48	Pleasantburg	\$1,343.34	47	28.58
Clinton	\$445.26	26	17.13	Rock Hill	\$711.29	86	8.27
Clover	\$680.95	17	40.06	Seneca	\$0.00	46	0.00
E Club	\$3,355.38	27	124.27	Seneca Golden Corner	\$157.89	23	6.86
Easley	\$250.00	51	4.90	Simpsonville	\$1,414.00	48	29.46
Emerald City	\$14,427.14	65	221.96	Spartan West	\$0.00	32	0.00
Fair Play	\$1,242.00	17	73.06	Spartanburg	\$2,500.00	199	12.56
Fort Mill	\$36,300.05	82	442.68	Special Events	\$752.28		
Fountain Inn	\$149.28	27	5.53	The Foothills	\$641.90	19	33.78
Gaffney	\$203.07	72	2.82	The Reedy River	\$2,633.53	36	73.15
Golden Strip Sunrise	\$274.20	15	18.28	Twin City	2,561.03	21	121.95
Greater Anderson	\$1,764.94	75	23.53	Union	\$1,047.93	46	22.78
Greater Greer	\$1,804.71	15	120.31	Walhalla	\$743.07	34	21.86
Greenville	\$4,278.76	266	16.09	Westminster	\$1,480.45	35	42.30
Greenville Breakfast	\$114.16	14	8.15	Winnsboro	\$26.34	26	1.01
Greenville City Center	\$3,946.95	55	71.76	York	\$1,397.45	36	38.82
Greenwood	\$2,553.83	113	22.60				
Indian Land	\$235.00	24	9.79				
Inman	\$228.86	22	10.40				
					\$122,174.54		



A Project of the Rotary Clubs of North America

www.cartfund.org

Mail gifts to CART

District 7750 CART Fund, c/o Steve Black
P.O. Box 1564, Aiken, SC 29802

7750's \$150,000 CHALLENGE

For CART information and/or presentations

DG Carol is challenging us to raise \$150,000 for CART. If your club needs more information about what CART is or some tips on how you can increase your giving, or how to have a fundraiser just for CART, contact District 7750 CART Chair, Steve Black at 803-649-7552 or steveblack724@gmail.com.

2018-19 District 7750 Rotary Foundation Giving

THROUGH 2/24/19
65.8% OF YEAR COMPLETED

Annual Fund Goal	\$ 460,442 (50 of 50 – 100%)
Annual Fund Total	\$ 298,609 (64.9% goal)
Annual Fund Per Capita	\$ 112.51 (2654)
Endowment Fund	\$ 29,807
PolioPlus Goal	\$ 139,342 (50 of 50 – 100%)
PolioPlus	\$ 75,523 (54.2% goal)
Total Giving	\$ 403,940
\$0 AF Clubs	1 (49 of 50 – 98.0%)
\$0 Polio Clubs	11 (39 of 50 – 78.0%)
DDF Transfer – Polio	\$ 42,000
Major Gifts	5
Major Donors	15
Paul Harris Fellows	220
Bequest Society	5
Benefactors	19
EREY	1522 (2654 members – 57.3%)
Sustaining Members	535 (2654 – 20.2%)
Paul Harris Society Eligible	66 (113 members – 58.4%)
Paul Harris Society Members	113
Rotary Direct	56
ALL-TIME FOR DISTRICT	
Paul Harris Fellows	5152
Benefactors	802
Bequest Society	97
Major Donors	88

**District Grant reports are due
by March 31 and new District Grant
requests are due by April 30.**

**Go to the website for forms
or contact Lorraine
for information or help.**

DISTRICT FOUNDATION CHAIR

Lorraine Angelino
118 Leyland Court
Greenwood, SC 29649
864.554.0598
dg2013@rotary7750.org



Greenville Rotarian recognized for work to eliminate substandard housing

Chris Manley, a member of the Rotary Club of Greenville and CEO and Executive Director of Rebuild Upstate, received an award for his organization's dedication to eliminating substandard housing across the Upstate.

The Max Heller Neighborhood Improvement Award is given annually to an organization that has shown exemplary efforts toward neighborhood improvement and empowerment.

The award is named in honor of former Greenville Mayor Max Heller, who spearheaded numerous efforts over the years to improve the quality of life for all citizens of Greenville County. The 2018 award was sponsored by BlueCross BlueShield of South Carolina.

Membership Champions (39 new members and their sponsors in January)

New Member	Club	Sponsor	Classification
Aldrich, Steven (STEVEN)	Union	Annie Smith	
Anderson, Heather (HEATHER)	Lake Wylie	Allan Gregory	Executive Assistant
Bell, Paul (PAUL BELL)	Abbeville	Shannon Sears	
Berry, Jeff (JEFF)	Union	Annie Smith	
Bowes, Dwayne (DWAYNE)	Anderson	Lauren Smith Lindsay	
Buchanan, William T. (WILL)	Aiken	Rachel L. d'Entremont	Civil Engineer
Campan, Darrin (DARRIN)	Newberry		Education
Carnley, Kasey (KASEY)	Gaffney	Phil Orr	
Carter, Michele (MICHELE)	Emerald City	Lorraine Marie Angelino	Correctional Institution
Clark, Marquice (MARQUICE)	North Spartanburg	Gretchen Pingley	
Collins, Sid G. (SID)	Easley		Non-Profit Organization
Davis, Tyler (TYLER)	Emerald City	Robert Elester Brown	IT Operations
Deiningner, Cheryl (CHERYL)	Rock Hill	Frank B. Robards III	Media
Edwards, Wesley Jr (WESLEY)	Anderson	Timothy L. Self	
Gooch, Matthew (MATTHEW)	Simpsonville	David W. Knapp	Plumbing
Graham, Michael James (MICHAEL)	Aiken	John A. Oakland	Nuclear Operations
Hamilton, Gordon W H (GORDON)	Lancaster Breakfast	Christopher Smith	Clergy
Hammond, Amy (AMY)	Greater Anderson	Bob Roche	Realtor
Hansen, Charlie (CHARLIE)	Aiken	John A. Oakland	Nuclear Operations
Hansen, Lyddie (LYDDIE)	Aiken	Elizabeth Ryberg	Nuclear operations
Harry, Alan Ellis (ALAN)	Simpsonville	David W. Knapp	Real Estate
Harry, Cathy Anne (CATHY)	Simpsonville	David W. Knapp	Real Estate Broker
Hesla, Toni (TONI)	North Spartanburg	Lisa Cox	
Lawson, Kelly (KELLY)	Union	Annie Smith	
Lewellyn, Patsy G. (PATSY)	Aiken		University Professor
Lewis, Lisa M (LISA)	Twin City	Delynn D. Barnes	
Lewis, Suzanne G (SUZANNE)	Rock Hill	David Wayne Lisk Sr.	Medical Management
Lomax, Courtney (COURTNEY)	Lancaster	Altheresa Goode Howard	
Marra, Jim (JIM)	Aiken	Teresa H. Haas	Nuclear Technology
O'Brien, David Corbusier (DAVID)	Simpsonville	David W. Knapp	Retail
Opperman, Christi (CHRISTI)	Emerald City	Glenda W. Corley	Rehab. Hospital
Parker, Keisha (KEISHA)	Abbeville	Mark Meyers	
Price, Chris (CHRIS)	Abbeville	Jennifer Erwin	
Stephens, Gene F. Jr. (GENE)	Winnsboro		
Thomason, Jeff (JEFF)	Laurens	Patricia C. Craine	
Thorpe, Dana L. (DANA)	Greenville	Don Koonce/Judith Prince	Executive Director
Tiller, Randall (RANDULL)	Aiken		
Williams, Douglas (DOUGLAS)	Winnsboro	Susan D. Taylor	
Wittenmyer, Larry (LARRY)	Aiken	Jerry R. Hughson	Marketing

Foundation and Membership pages ahead: [Check the trends](#)

Following this page are several pages of information on Foundation giving and membership trends. These figures come from Rotary International and are the official figures.

District 7750 Membership Report					
	2/25/2019				
		Membership Up			
		Membership Steady			
		Membership Down			
Rank	Club	Starting Membership	Current Membership	Net Gain YTD	Avg. Attendance
1	Abbeville	45	56	11	62.00
2	Clover	17	27	10	76.10
3	Easley	51	61	10	78.10
4	Emerald City	65	71	6	76.30
5	Gaffney	72	78	6	71.50
6	Laurens	49	54	5	78.70
7	Aiken	180	184	4	77.80
8	Clemson-Calhoun	28	32	4	87.60
9	Greater Anderson	75	79	4	61.40
10	Lake Wylie	23	27	4	73.10
11	Union	46	50	4	60.30
12	Anderson	74	77	3	53.60
13	Fort Mill	82	85	3	37.10
14	Chester	53	55	2	56.00
15	Lancaster	64	66	2	70.39
16	North Augusta	21	23	2	59.00
17	Reedy River	36	38	2	53.00
18	Winnsboro	25	27	2	88.00
19	Blacksburg	15	16	1	76.92
20	Clinton	26	27	1	59.80
21	Greenville Breakfast	14	15	1	53.30
22	Indian Land	24	25	1	57.60
23	North Spartanburg	36	37	1	77.50
24	Pickens	43	44	1	71.00
25	Seneca Golden Corner	23	24	1	72.70
26	Batesburg-Leesville	17	17	0	39.71
27	Clemson	94	94	0	60.20
28	E-Club of The Carolinas	27	27	0	92.86
29	Fountain Inn	27	27	0	82.50
30	Greenwood	113	113	0	57.59
31	Seneca	46	46	0	60.50
32	Walhalla	34	34	0	60.00
33	Greenville City Center	55	54	-1	61.11
34	Inman	22	21	-1	80.00
35	Lancaster Breakfast	56	55	-1	60.80
36	Newberry	77	76	-1	80.90
37	Pleasantburg	47	46	-1	61.80
38	Spartan West	32	31	-1	62.10
39	Twin City of Batesburg-Leesville	21	20	-1	73.40
40	York	36	35	-1	61.00
41	Golden Strip Sunrise	15	13	-2	73.00
42	Greater Greer	15	13	-2	62.50
43	Mauldin	30	28	-2	73.50
44	Aiken Sunrise	39	35	-4	74.50
45	Westminster	35	31	-4	57.50
46	Simpsonville	48	43	-5	95.00
47	The Foothills	19	14	-5	57.14
48	Rock Hill	86	80	-6	69.17
49	Spartanburg	199	193	-6	0.00
50	Woodruff	11	0	-11	0.00
51	Greenville	266	242	-24	49.40
	Totals	2654	2666	12	

Rotary District 7750
Membership Gain & Rotary Foundation
Monthly Progress Report
February 25, 2019

A r e a	Club	7/1/2019 Member Goal	Current Members 2-25-19	Member Gain 2-25-19	AF Actual 2017-18	AF Goal 2018-19	AF Goal Shortfall vs. LY	% of AF Goal Achieved 2018-19	AF Per Capita 2018-19	AF Month	AF YTD 2018-19	Polio Actual 2017-18	Polio YTD 2018-19	Polio Per Capita 2018-19	Polio Goal 2018-19	Polio % of Goal
1	Anderson	83	77	3	11,098	\$11,250		76.7%	\$117	\$2,450	\$8,625	\$5,101	\$3,185	\$43	\$3,750	84.9%
1	Clemson	110	94	0	13,144	\$14,400		71.6%	\$110	\$292	\$10,314	\$2,031	\$4,420	\$47	\$1,920	230.2%
1	Clemson-Calhoun	34	32	4	2,760	\$4,433		89.2%	\$141	\$125	\$3,956	\$2,025	\$987	\$35	\$1,550	63.7%
1	Greater Anderson	80	79	4	17,190	\$15,000	\$2,190	47.1%	\$94	\$170	\$7,060	\$3,824	\$1,788	\$24	\$3,750	47.7%
A-1 AG Cathy Golson		307	282	11	44,192	\$45,083		66.4%	\$111	\$3,037	\$29,955	\$12,980	\$10,380	\$38	\$10,970	94.6%
2	Seneca	55	46	0	8,010	\$8,579		56.9%	\$106	\$169	\$4,879	\$1,170	\$680	\$15	\$2,450	27.8%
2	Seneca Golden Corner	26	24	1	3,360	\$2,310	\$1,050	48.1%	\$48	\$0	\$1,110	\$800	\$331	\$14	\$2,200	15.0%
2	Walhalla	36	34	0	1,000	\$3,712		0.0%	\$0	\$0	\$0	\$3,450	\$8	\$0	\$800	1.0%
2	Westminster	38	31	-4	4,890	\$6,000		52.7%	\$90	\$85	\$3,160	\$2,064	\$0	\$0	\$2,100	0.0%
A-2 AG Frank Cox		155	135	-3	17,260	\$20,601		44.4%	\$66	\$254	\$9,149	\$7,484	\$1,019	\$7	\$7,550	13.5%
3	Greenville	286	242	-24	46,108	\$52,000		83.3%	\$163	\$15,000	\$43,334	\$11,580	\$5,900	\$22	\$7,800	75.6%
3	Greenville Breakfast	18	15	1	2,145	\$4,662		23.2%	\$77	\$510	\$1,080	\$1,300	\$25	\$2	\$2,160	1.2%
3	Greenville City Center	47	54	-1	2,656	\$1,600	\$1,056	91.8%	\$82	\$0	\$1,469	\$450	\$100	\$6	\$832	12.0%
3	Pleasantburg	52	46	-1	11,717	\$9,212	\$2,505	79.9%	\$157	\$169	\$7,364	\$6,922	\$6,257	\$133	\$6,251	100.1%
A-3 AG Mike Taylor		403	357	-25	62,626	\$67,474		78.9%	\$154	\$15,679	\$53,247	\$20,252	\$12,282	\$36	\$17,043	72.1%
4	Inman	25	21	-1	2,850	\$2,200	\$650	45.5%	\$45	\$0	\$1,000	\$345	\$0	\$0	\$550	0.0%
4	North Spartanburg	41	37	1	8,108	\$5,600	\$2,508	83.8%	\$130	\$112	\$4,695	\$1,863	\$1,015	\$28	\$2,000	50.8%
4	Spartan West	35	31	-1	2,845	\$5,952		92.7%	\$173	\$500	\$5,520	\$525	\$0	\$0	\$1,664	0.0%
4	Spartanburg	220	193	-6	9,120	\$12,220		9.2%	\$6	\$0	\$1,120	\$10,850	\$1,100	\$6	\$9,400	11.7%
A-4 AG Marc White		321	282	-7	22,923	\$25,972		47.5%	\$43	\$612	\$12,335	\$13,582	\$2,115	\$7	\$13,614	15.5%
5	Blacksburg	17	16	1	666	\$975		79.5%	\$52	\$0	\$775	\$450	\$880	\$59	\$481	183.0%
5	Clover	20	27	10	1,769	\$2,850		50.9%	\$85	\$0	\$1,450	\$2,819	\$3,597	\$212	\$950	378.6%
5	Gaffney	82	78	6	7,874	\$9,000		34.2%	\$43	\$464	\$3,081	\$1,468	\$715	\$10	\$1,875	38.1%
5	York	41	35	-1	8,340	\$9,879		55.4%	\$152	\$0	\$5,477	\$1,818	\$1,334	\$37	\$2,035	65.6%
A-5 AG Babette Sabia		160	156	16	18,649	\$22,704		47.5%	\$77	\$464	\$10,783	\$6,555	\$6,526	\$47	\$5,341	122.2%
6	Fort Mill	90	85	3	30,573	\$30,156	\$417	34.7%	\$128	\$100	\$10,476	\$2,290	\$100	\$1	\$2,000	5.0%
6	Indian Land	36	25	1	3,261	\$5,040		79.8%	\$168	\$20	\$4,020	\$150	\$765	\$32	\$1,290	59.3%
6	Lake Wylie	30	27	4	3,620	\$3,744		53.6%	\$87	\$140	\$2,006	\$1,201	\$49	\$2	\$1,224	4.0%
6	Rock Hill	100	80	-6	10,107	\$9,300	\$807	1.1%	\$1	\$0	\$100	\$1,650	\$0	\$0	\$3,000	0.0%
A-6 AG Lindsay Walker		256	217	2	47,561	\$48,240		34.4%	\$77	\$260	\$16,602	\$5,291	\$914	\$4	\$7,514	12.2%

A r e a	Club	7/1/2019 Member Goal	Current Members 2-25-19	Member Gain 2-25-19	AF Actual 2017-18	AF Goal 2018-19	AF Goal Shortfall vs. LY	% of AF Goal Achieved 2018-19	AF Per Capita 2018-19	AF Month	AF YTD 2018-19	Polio Actual 2017-18	Polio YTD 2018-19	Polio Per Capita 2018-19	Polio Goal 2018-19	Polio % of Goal
7	Chester	58	55	2	4,465	\$5,460		11.4%	\$12	\$0	\$625	\$4,220	\$2,700	\$51	\$4,160	64.9%
7	Lancaster	68	66	2	5,006	\$3,264	\$1,742	58.7%	\$30	\$0	\$1,917	\$900	\$3,675	\$57	\$1,280	287.1%
7	Lancaster Breakfast	57	55	-1	5,563	\$5,575		13.5%	\$13	\$0	\$750	\$525	\$800	\$14	\$600	133.3%
7	Winnsboro	30	27	2	2,350	\$2,600		48.3%	\$50	\$0	\$1,255	\$865	\$0	\$0	\$1,179	0.0%
A-7 AG Joyce Morin		213	203	5	17,384	\$16,899	\$485	26.9%	\$23	\$0	\$4,547	\$6,510	\$7,175	\$36	\$7,219	99.4%
8	Aiken	190	184	4	25,283	\$36,075		44.3%	\$89	\$85	\$15,967	\$5,498	\$5,536	\$31	\$7,955	69.6%
8	Aiken Sunrise	44	35	-4	4,025	\$8,000		58.2%	\$119	\$250	\$4,655	\$2,810	\$1,411	\$36	\$2,600	54.3%
8	Batesburg-Leesville	21	17	0	975	\$2,934		50.0%	\$86	\$0	\$1,467	\$2,011	\$1,552	\$91	\$1,404	110.5%
8	North Augusta	24	23	2	2,415	\$3,600		41.0%	\$70	\$0	\$1,475	\$250	\$100	\$5	\$1,000	10.0%
8	Twin City of Batesburg-Leesville	23	20	-1	3,341	\$4,200		42.6%	\$85	\$100	\$1,788	\$1,510	\$420	\$20	\$1,050	40.0%
A-8 AG Watson Dorn		302	279	1	36,039	\$54,809		46.3%	\$91	\$435	\$25,352	\$12,079	\$9,019	\$32	\$14,009	64.4%
9	Abbeville	50	56	11	3,025	\$5,085		33.9%	\$38	\$0	\$1,725	\$100	\$0	\$0	\$1,215	0.0%
9	EClub of the Carolinas	35	27	0	8,772	\$5,000	\$3,772	195.4%	\$362	\$972	\$9,770	\$2,343	\$2,075	\$77	\$3,147	65.9%
9	Emerald City	72	71	6	25,527	\$26,000		94.6%	\$378	\$110	\$24,590	\$3,261	\$4,334	\$67	\$3,250	133.4%
9	Greenwood	120	113	0	15,640	\$22,310		195.4%	\$386	\$30	\$43,590	\$11,236	\$2,334	\$21	\$3,000	77.8%
A-9 AG Lori Kent		277	267	17	52,964	\$58,395		136.4%	\$319	\$1,112	\$79,675	\$16,940	\$8,743	\$35	\$10,612	82.4%
10	Clinton	28	27	1	2,800	\$4,000		20.0%	\$31	\$0	\$800	\$150	\$0	\$0	\$1,000	0.0%
10	Laurens	56	54	5	5,050	\$8,575		32.7%	\$57	\$0	\$2,800	\$2,800	\$2,856	\$58	\$2,850	100.2%
10	Newberry	88	76	-1	17,800	\$15,600	\$2,200	157.3%	\$319	\$200	\$24,545	\$4,050	\$3,700	\$48	\$3,500	105.7%
10	Union	47	50	4	7,285	\$6,600	\$685	33.3%	\$48	\$0	\$2,200	\$3,805	\$1,775	\$39	\$2,200	80.7%
A-10 AG Renee Stubbs		219	207	9	32,935	\$34,775		87.3%	\$153	\$200	\$30,345	\$10,805	\$8,331	\$42	\$9,550	87.2%
11	Fountain Inn	28	27	0	1,500	\$3,000		97.0%	\$108	\$20	\$2,910	\$25	\$369	\$14	\$600	61.5%
11	Golden Strip Sunrise	17	13	-2	370	\$2,625		102.9%	\$180	\$25	\$2,700	\$25	\$2,425	\$162	\$450	538.9%
11	Mauldin	40	28	-2	5,244	\$9,664		2.3%	\$8	\$0	\$225	\$1,352	\$0	\$0	\$4,672	0.0%
11	Simpsonville	55	43	-5	7,914	\$8,750		45.7%	\$83	\$85	\$4,001	\$1,625	\$0	\$0	\$2,300	0.0%
A-11 AG Alex Grewe		140	111	-9	15,028	\$24,039		40.9%	\$82	\$130	\$9,836	\$3,027	\$2,794	\$23	\$8,022	34.8%
12	Easley	57	61	10	1,250	\$9,451		26.5%	\$49	\$0	\$2,500	\$25	\$2,250	\$44	\$1,120	200.9%
12	Greater Greer	20	13	-2	1,875	\$1,350	\$525	88.9%	\$80	\$0	\$1,200	\$855	\$600	\$40	\$750	80.0%
12	Reedy River	47	47	2	20,880	\$18,500	\$2,380	36.7%	\$148	\$170	\$6,785	\$5,876	\$375	\$8	\$3,000	12.5%
12	Pickens	44	44	1	4,575	\$4,400	\$175	15.9%	\$16	\$0	\$700	\$1,350	\$1,000	\$23	\$1,760	56.8%
12	The Foothills	21	14	-5	1,550	\$2,000		66.3%	\$70	\$0	\$1,325	\$25,250	\$0	\$0	\$20,000	0.0%
A-12 AG Karen Culley		189	179	6	30,130	\$35,701		35.0%	\$72	\$170	\$12,510	\$33,356	\$4,225	\$24	\$26,630	15.9%
District 7750					0					\$0	\$300	\$0	\$2,000			
Totals		2942	2,675	23	397,691	\$454,692		64.8%	\$113	\$22,353	\$294,635	\$148,862	\$75,523	\$29	\$138,074	54.7%

Area Summary

	7/1/2019 Member Goal	Current Members 2-25-19	Member Gain 2-25-19	AF Actual 2017-18	AF Goal 2018-19	AF Goal Shortfall vs. LY	% of AF Goal Achieved 2018-19	AF Per Capita 2018-19	AF Month	AF YTD 2018-19	Polio Actual 2017-18	Polio YTD 2018-19	Polio Per Capita 2018-19	Polio Goal 2018-19	Polio % of Goal
A-1 AG Cathy Golson	307	282	11	44,192	\$45,083		66.4%	\$111	\$3,037	\$29,955	\$12,980	\$10,380	\$38	\$10,970	94.6%
A-2 AG Frank Cox	155	135	-3	17,260	\$20,601		44.4%	\$66	\$254	\$9,149	\$7,484	\$1,019	\$7	\$7,550	13.5%
A-3 AG Mike Taylor	403	357	-25	62,626	\$67,474		78.9%	\$154	\$15,679	\$53,247	\$20,252	\$12,282	\$36	\$17,043	72.1%
A-4 AG Marc White	321	282	-7	22,923	\$25,972		47.5%	\$43	\$612	\$12,335	\$13,582	\$2,115	\$7	\$13,614	15.5%
A-5 AG Babette Sabia	160	156	16	18,649	\$22,704		47.5%	\$77	\$464	\$10,783	\$6,555	\$6,526	\$47	\$5,341	122.2%
A-6 AG Lindsay Walker	256	217	2	47,561	\$48,240		34.4%	\$77	\$260	\$16,602	\$5,291	\$914	\$4	\$7,514	12.2%
A-7 AG Joyce Morin	213	203	5	17,384	\$16,899	\$485	26.9%	\$23	\$0	\$4,547	\$6,510	\$7,175	\$36	\$7,219	99.4%
A-8 AG Watson Dorn	302	279	1	36,039	\$54,809		46.3%	\$91	\$435	\$25,352	\$12,079	\$9,019	\$32	\$14,009	64.4%
A-9 AG Lori Kent	277	267	17	52,964	\$58,395		136.4%	\$319	\$1,112	\$79,675	\$16,940	\$8,743	\$35	\$10,612	82.4%
A-10 AG Renee Stubbs	219	207	9	32,935	\$34,775		87.3%	\$153	\$200	\$30,345	\$10,805	\$8,331	\$42	\$9,550	87.2%
A-11 AG Alex Grewe	140	111	-9	15,028	\$24,039		40.9%	\$82	\$130	\$9,836	\$3,027	\$2,794	\$23	\$8,022	34.8%
A-12 AG Karen Culley	189	179	6	30,130	\$35,701		35.0%	\$72	\$170	\$12,510	\$33,356	\$4,225	\$24	\$26,630	15.9%
Totals	2942	2675	23	397,691	454,692	\$485	64.8%	\$113	\$22,353	\$294,635	\$148,862	\$73,523	\$28	\$138,074	54.7%

Top Giving Clubs (Annual Fund)

Top Clubs by % of AF Goal Achieved

1	EClub of the Carolinas	195%
2	Greenwood	195%
3	Newberry	157%
4	Golden Strip Sunrise	103%
5	Fountain Inn	97%

Top Clubs by AF Per Capita

1	Greenwood	\$385.75
2	Emerald City	\$378.31
3	EClub of the Carolinas	\$361.85
4	Newberry	\$318.77
5	Golden Strip Sunrise	\$180.00

Top Clubs by Total AF Giving

1	Greenwood	\$43,590
2	Greenville	\$43,334
3	Emerald City	\$24,590
4	Newberry	\$24,545
5	Aiken	\$15,967

Top Giving Clubs (Polio)

Top Clubs by % of Polio Goal Achieved

1	Golden Strip Sunrise	539%
2	Clover	379%
3	Lancaster	287%
4	Clemson	230%
5	Easley	201%

Top Clubs by Total Polio Giving

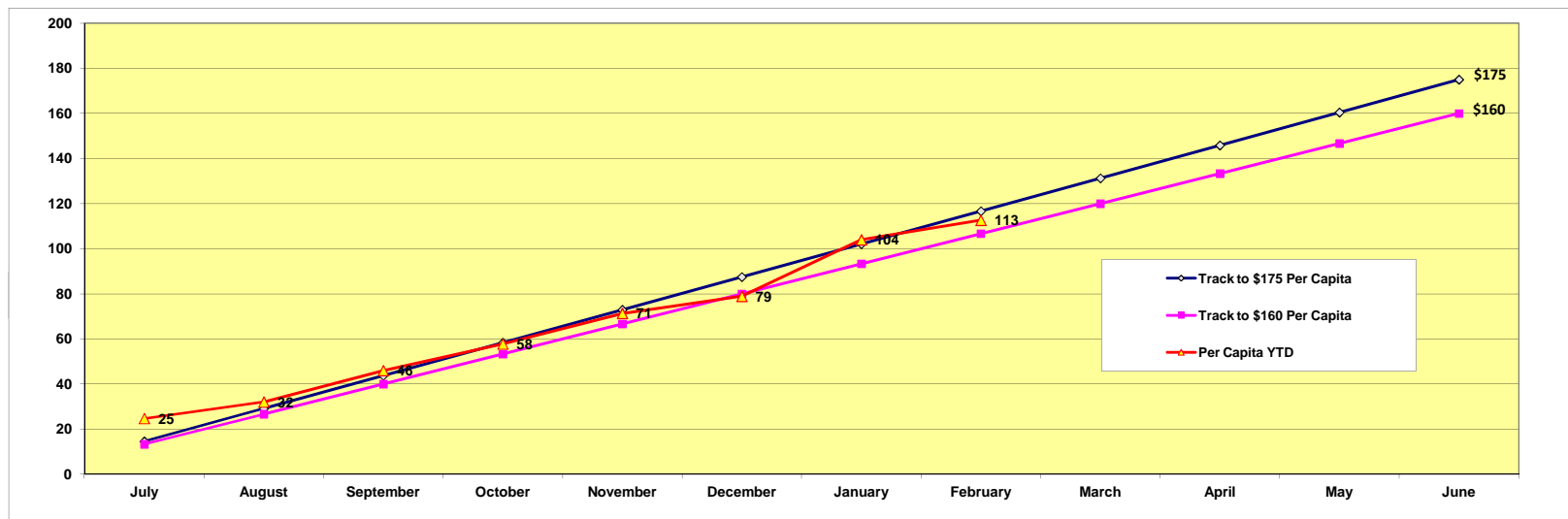
1	Pleasantburg	\$6,257
2	Greenville	\$5,900
3	Aiken	\$5,536
4	Clemson	\$4,420
5	Emerald City	\$4,334

4 Clubs have achieved 100% of their AF Goal
 16 Clubs have achieved 75% of their AF Goal
 13 Clubs have achieved 100% of their Polio Goal
 10 Clubs are over \$150 AF Per Capita
 19 Clubs are over \$100 AF Per Capita

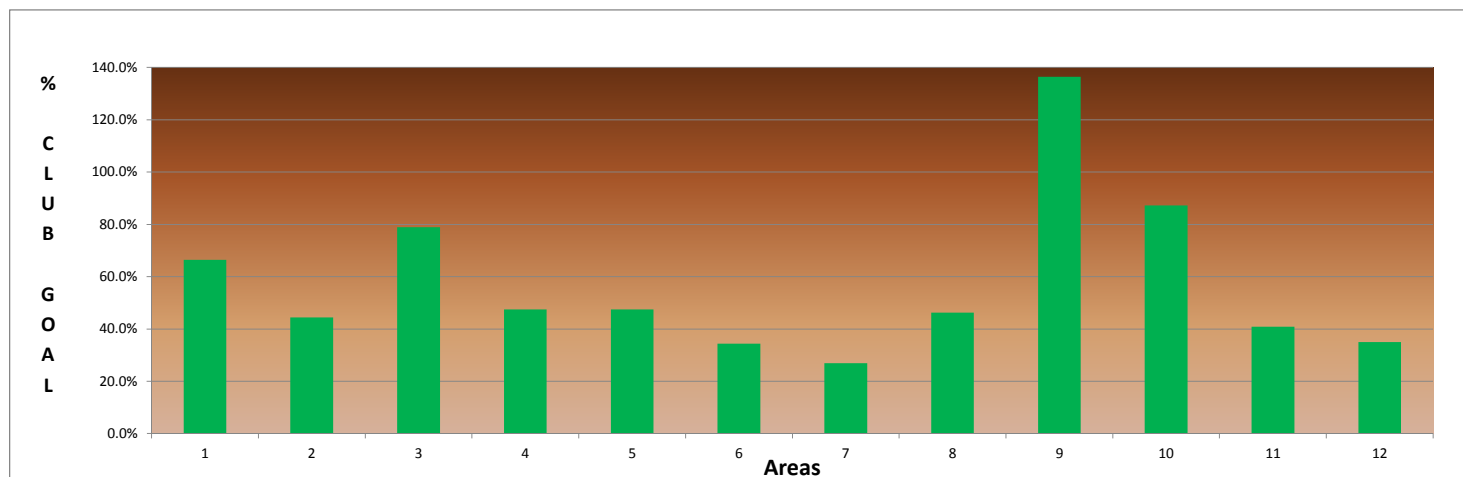
 0 Clubs have given \$5 Total to the AF (Zero Giving)
 0 Clubs have given \$5 Total to Polio (Zero Giving)

 1 Areas have achieved 100% of their AF Goal
 3 Areas have achieved 75% of their AF Goal

 1 Areas are over \$200 AF Per Capita
 4 Areas are over \$100 AF Per Capita

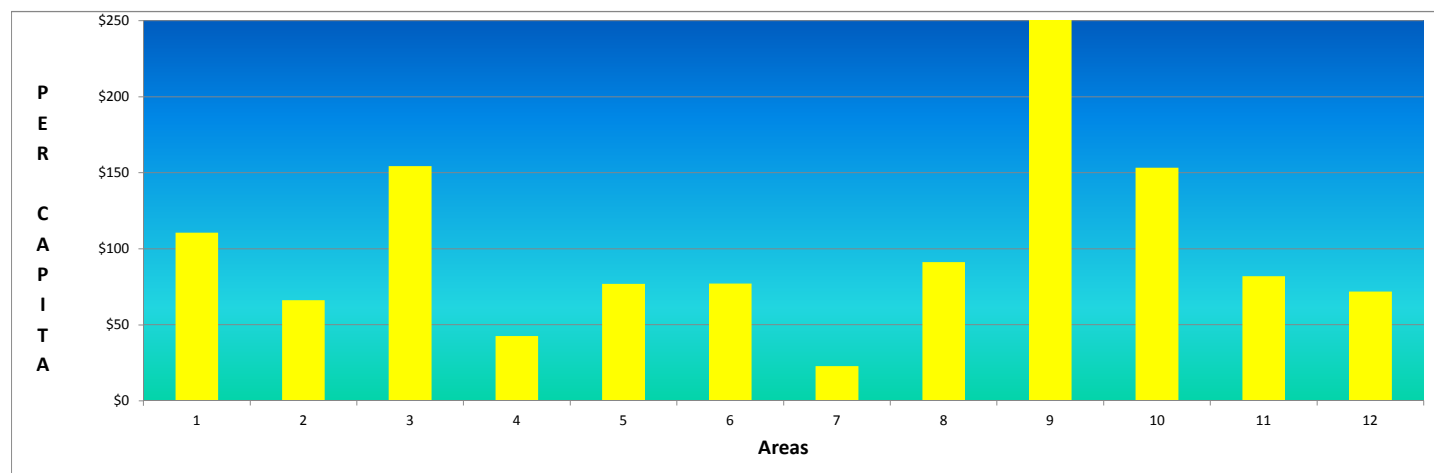


% of Club AF Goal Achieved - By Area



AF Per Capita - By Area

Goal is \$175



All Clubs Ranked by % of AF Goal Achieved

1	EClub of the Carolinas	195%
2	Greenwood	195%
3	Newberry	157%
4	Golden Strip Sunrise	103%
5	Fountain Inn	97%
6	Emerald City	95%
7	Spartan West	93%
8	Greenville City Center	92%
9	Clemson-Calhoun	89%
10	Greater Greer	89%
11	North Spartanburg	84%
12	Greenville	83%
13	Pleasantburg	80%
14	Indian Land	80%
15	Blacksburg	79%
16	Anderson	77%
17	Clemson	72%
18	The Foothills	66%
19	Lancaster	59%
20	Aiken Sunrise	58%
21	Seneca	57%
22	York	55%
23	Lake Wylie	54%
24	Westminster	53%
25	Clover	51%
26	Batesburg-Leesville	50%
27	Winnsboro	48%
28	Seneca Golden Corner	48%
29	Greater Anderson	47%
30	Simpsonville	46%

All Clubs Ranked by % of Polio Goal Achieved

1	Golden Strip Sunrise	539%
2	Clover	379%
3	Lancaster	287%
4	Clemson	230%
5	Easley	201%
6	Blacksburg	183%
7	Emerald City	133%
8	Lancaster Breakfast	133%
9	Batesburg-Leesville	111%
10	Newberry	106%
11	Laurens	100%
12	Pleasantburg	100%
13	Anderson	85%
14	Union	81%
15	Greater Greer	80%
16	Greenwood	78%
17	Greenville	76%
18	Aiken	70%
19	EClub of the Carolinas	66%
20	York	66%
21	Chester	65%
22	Clemson-Calhoun	64%
23	Fountain Inn	62%
24	Indian Land	59%
25	Pickens	57%
26	Aiken Sunrise	54%
27	North Spartanburg	51%
28	Greater Anderson	48%
29	Twin City of Batesburg-Leesville	40%
30	Gaffney	38%

31	Inman	45%
32	Aiken	44%
33	Twin City of Batesburg-Leesville	43%
34	North Augusta	41%
35	Reedy River	37%
36	Fort Mill	35%
37	Gaffney	34%
38	Abbeville	34%
39	Union	33%
40	Laurens	33%
41	Easley	26%
42	Greenville Breakfast	23%
43	Clinton	20%
44	Pickens	16%
45	Lancaster Breakfast	13%
46	Chester	11%
47	Spartanburg	9%
48	Mauldin	2%
49	Rock Hill	1%
50		0%

31	Seneca	28%
32	Seneca Golden Corner	15%
33	Reedy River	13%
34	Greenville City Center	12%
35	Spartanburg	12%
36	North Augusta	10%
37	Fort Mill	5%
38	Lake Wylie	4%
39	Greenville Breakfast	1%
40	Walhalla	1%
41		0%
42		0%
43		0%
44		0%
45		0%
46		0%
47		0%
48		0%
49		0%
50		0%

All Clubs Ranked by AF Per Capita

1	Greenwood	\$385.75
2	Emerald City	\$378.31
3	EClub of the Carolinas	\$361.85
4	Newberry	\$318.77
5	Golden Strip Sunrise	\$180.00
6	Spartan West	\$172.50
7	Indian Land	\$167.50
8	Greenville	\$162.91
9	Pleasantburg	\$156.69
10	York	\$152.14
11	Reedy River	\$147.50
12	Clemson-Calhoun	\$141.29
13	North Spartanburg	\$130.40
14	Fort Mill	\$127.76
15	Aiken Sunrise	\$119.36
16	Anderson	\$116.55
17	Clemson	\$109.72
18	Fountain Inn	\$107.78
19	Seneca	\$106.06
20	Greater Anderson	\$94.13
21	Westminster	\$90.29
22	Aiken	\$88.71
23	Lake Wylie	\$87.22
24	Batesburg-Leesville	\$86.29
25	Clover	\$85.29
26	Twin City of Batesburg-Leesville	\$85.14
27	Simpsonville	\$83.35
28	Greenville City Center	\$81.61
29	Greater Greer	\$80.00
30	Greenville Breakfast	\$77.14
31	North Augusta	\$70.24
32	The Foothills	\$69.74
33	Laurens	\$57.14

All Clubs Ranked by Polio Per Capita

1	Clover	\$211.59
2	Golden Strip Sunrise	\$161.67
3	Pleasantburg	\$133.13
4	Batesburg-Leesville	\$91.29
5	EClub of the Carolinas	\$76.85
6	Emerald City	\$66.68
7	Blacksburg	\$58.67
8	Laurens	\$58.29
9	Lancaster	\$57.42
10	Chester	\$50.94
11	Newberry	\$48.05
12	Clemson	\$47.02
13	Easley	\$44.12
14	Anderson	\$43.04
15	Greater Greer	\$40.00
16	Union	\$38.59
17	York	\$37.06
18	Aiken Sunrise	\$36.18
19	Clemson-Calhoun	\$35.25
20	Indian Land	\$31.88
21	Aiken	\$30.76
22	North Spartanburg	\$28.19
23	Greater Anderson	\$23.84
24	Pickens	\$23.26
25	Greenville	\$22.18
26	Greenwood	\$20.65
27	Twin City of Batesburg-Leesville	\$20.00
28	Seneca	\$14.78
29	Seneca Golden Corner	\$14.39
30	Lancaster Breakfast	\$14.29
31	Fountain Inn	\$13.67
32	Gaffney	\$9.93
33	Reedy River	\$8.15

34	Blacksburg	\$51.67
35	Winnsboro	\$50.20
36	Easley	\$49.02
37	Seneca Golden Corner	\$48.26
38	Union	\$47.83
39	Inman	\$45.45
40	Gaffney	\$42.80
41	Abbeville	\$38.33
42	Clinton	\$30.77
43	Lancaster	\$29.95
44	Pickens	\$16.28
45	Lancaster Breakfast	\$13.39
46	Chester	\$11.79
47	Mauldin	\$7.50
48	Spartanburg	\$5.63
49	Rock Hill	\$1.16
50		\$0.00

34	Greenville City Center	\$5.56
35	Spartanburg	\$5.53
36	North Augusta	\$4.76
37	Lake Wylie	\$2.13
38	Greenville Breakfast	\$1.79
39	Fort Mill	\$1.22
40	Walhalla	\$0.24
41		\$0.00
42		\$0.00
43		\$0.00
44		\$0.00
45		\$0.00
46		\$0.00
47		\$0.00
48		\$0.00
49		\$0.00
50		\$0.00

All Clubs Ranked by Total AF Giving

1	Greenwood	\$43,590
2	Greenville	\$43,334
3	Emerald City	\$24,590
4	Newberry	\$24,545
5	Aiken	\$15,967
6	Fort Mill	\$10,476
7	Clemson	\$10,314
8	EClub of the Carolinas	\$9,770
9	Anderson	\$8,625
10	Pleasantburg	\$7,364
11	Greater Anderson	\$7,060
12	Reedy River	\$6,785
13	Spartan West	\$5,520
14	York	\$5,477
15	Seneca	\$4,879
16	North Spartanburg	\$4,695
17	Aiken Sunrise	\$4,655
18	Indian Land	\$4,020
19	Simpsonville	\$4,001
20	Clemson-Calhoun	\$3,956
21	Westminster	\$3,160
22	Gaffney	\$3,081
23	Fountain Inn	\$2,910
24	Laurens	\$2,800
25	Golden Strip Sunrise	\$2,700
26	Easley	\$2,500
27	Union	\$2,200
28	Lake Wylie	\$2,006
29	Lancaster	\$1,917
30	Twin City of Batesburg-Leesville	\$1,788
31	Abbeville	\$1,725
32	North Augusta	\$1,475

All Clubs Ranked by Total Polio Giving

1	Pleasantburg	\$6,257
2	Greenville	\$5,900
3	Aiken	\$5,536
4	Clemson	\$4,420
5	Emerald City	\$4,334
6	Newberry	\$3,700
7	Lancaster	\$3,675
8	Clover	\$3,597
9	Anderson	\$3,185
10	Laurens	\$2,856
11	Chester	\$2,700
12	Golden Strip Sunrise	\$2,425
13	Greenwood	\$2,334
14	Easley	\$2,250
15	EClub of the Carolinas	\$2,075
16	Greater Anderson	\$1,788
17	Union	\$1,775
18	Batesburg-Leesville	\$1,552
19	Aiken Sunrise	\$1,411
20	York	\$1,334
21	Spartanburg	\$1,100
22	North Spartanburg	\$1,015
23	Pickens	\$1,000
24	Clemson-Calhoun	\$987
25	Blacksburg	\$880
26	Lancaster Breakfast	\$800
27	Indian Land	\$765
28	Gaffney	\$715
29	Seneca	\$680
30	Greater Greer	\$600
31	Twin City of Batesburg-Leesville	\$420
32	Reedy River	\$375

33	Greenville City Center	\$1,469
34	Batesburg-Leesville	\$1,467
35	Clover	\$1,450
36	The Foothills	\$1,325
37	Winnsboro	\$1,255
38	Greater Greer	\$1,200
39	Spartanburg	\$1,120
40	Seneca Golden Corner	\$1,110
41	Greenville Breakfast	\$1,080
42	Inman	\$1,000
43	Clinton	\$800
44	Blacksburg	\$775
45	Lancaster Breakfast	\$750
46	Pickens	\$700
47	Chester	\$625
48	Mauldin	\$225
49	Rock Hill	\$100
50		\$0

33	Fountain Inn	\$369
34	Seneca Golden Corner	\$331
35	Greenville City Center	\$100
36	Fort Mill	\$100
37	North Augusta	\$100
38	Lake Wylie	\$49
39	Greenville Breakfast	\$25
40	Walhalla	\$8
41		\$0
42		\$0
43		\$0
44		\$0
45		\$0
46		\$0
47		\$0
48		\$0
49		\$0
50		\$0

All Areas Ranked by % of AF Goal Achieved

1	A-9 AG Lori Kent	136.4%
2	A-10 AG Renee Stubbs	87.3%
3	A-3 AG Mike Taylor	78.9%
4	A-1 AG Cathy Golson	66.4%
5	A-5 AG Babette Sabia	47.5%
6	A-4 AG Marc White	47.5%
7	A-8 AG Watson Dorn	46.3%
8	A-2 AG Frank Cox	44.4%
9	A-11 AG Alex Grewe	40.9%
10	A-12 AG Karen Culley	35.0%
11	A-6 AG Lindsay Walker	34.4%
12	A-7 AG Joyce Morin	26.9%

All Areas Ranked by AF Per Capita

1	A-9 AG Lori Kent	\$318.70
2	A-3 AG Mike Taylor	\$154.34
3	A-10 AG Renee Stubbs	\$153.26
4	A-1 AG Cathy Golson	\$110.53
5	A-8 AG Watson Dorn	\$91.19
6	A-11 AG Alex Grewe	\$81.96
7	A-6 AG Lindsay Walker	\$77.22
8	A-5 AG Babette Sabia	\$77.02
9	A-12 AG Karen Culley	\$71.90
10	A-2 AG Frank Cox	\$66.29
11	A-4 AG Marc White	\$42.68
12	A-7 AG Joyce Morin	\$22.96

All Areas Ranked by Total AF Giving

1	A-9 AG Lori Kent	\$79,675
2	A-3 AG Mike Taylor	\$53,247
3	A-10 AG Renee Stubbs	\$30,345
4	A-1 AG Cathy Golson	\$29,955
5	A-8 AG Watson Dorn	\$25,352
6	A-6 AG Lindsay Walker	\$16,602
7	A-12 AG Karen Culley	\$12,510
8	A-4 AG Marc White	\$12,335
9	A-5 AG Babette Sabia	\$10,783
10	A-11 AG Alex Grewe	\$9,836
11	A-2 AG Frank Cox	\$9,149
12	A-7 AG Joyce Morin	\$4,547