



Be a gift to the world

7750

ROTARY INTERNATIONAL

MAY is Youth
Service Month.



District Governor

TERRY WEAVER

DG2015@Rotary7750.org

864 275-3796

18 Pristine Dr.

Greer, SC 29650

**District Awards
Banquet and
Governor
Installation
June 23
Greenville**

Register in DaCdb.



Our Foundation giving this year has been going well, in part due to DG Terry's 10 Plus One Challenge. Terry will give \$1,000 to the Foundation for every 10 new Paul Harris Society members. It's not too late to participate. Just let Terry know you are committing to donate \$1,000 a year to our Annual Programs Fund (and make your first gift).

All Club Conference **AN EVENT TO REMEMBER**

BY DG TERRY WEAVER

"Thank you for the best conference I've ever attended with any organization," said one member of the All Club Conference at the Hyatt Regency in Greenville, April 22-24. If you missed this Conference, you missed a life experience.

Opening with a fast-paced visual presentation of club banners, accompanied by the Legacy Charter School Percussion Ensemble, the Conference featured five nationally-known speakers on topics ranging from leadership to the global picture of Rotary to Alzheimer's Disease to micro-lending for economic development in the poorest city in America. The Greenville County Teacher of the Year received a standing ovation for her story of service to our community in a kindergarten classroom — all boys.

Members enjoyed their choice of nine different breakout sessions on topics such as self-improvement, club projects, international projects, public image/social media and life planning. Eleven clubs presented All Star projects with lots of ideas other clubs plan to use. Clubs shared and celebrated their accomplishments in both table-top displays and electronic slide shows. The Knights of the Guild were on hand, as was a full-scale ShelterBox display.



ALL CLUB CONFERENCE 2016
[CLICK FOR PHOTOS \(AND MORE ARE INSIDE\)](#)

Two networking dinners featured bands that kept members on the dance floor and enjoying each other until the lights went up.

Our thanks to the Conference Committee for over a year's worth of effort, culminating in an event several hundred Rotarians will remember for a long time. Hosted by the Rotary Club of Greenville, the Conference was also supported by clubs that took responsibility for large segments of the event, including Pleasantburg, Greater Anderson, Fort Mill and others. Thanks also to two dozen sponsors whose contributions allowed us to bring top-notch speakers to South Carolina from multiple states.

And, finally, the District's first online silent auction raised \$8,000 for PolioPlus, which becomes \$24,000 with the Gates match and buys polio vaccine for 170,000 children.

Hope you didn't miss this one.

THE THREE-WAY TEST OF RESPONSIBLE LEADERSHIP

BY DG TERRY WEAVER

Are your decisions:

1. Based on the future or the present?
2. Based on convenience or conviction?
3. Constructive or destructive?

This litmus test useful in business, personal and Rotary decision making was offered by Bawa Jain at the Peace and Conflict Resolution Seminar sponsored by the Rotary Club of Greenville as part of its Centennial Year activities. Bawa Jain served as Secretary General of the Millennium World Peace Summit, held by the United Nations.

Let's look at them one at a time.

FUTURE OR PRESENT?

A mentor of mine, Harvey Siebert, was my boss 650 miles away, before the Internet, Email or Fax machines were invented. I would call Harvey on the phone about a problem I was having. His first question was, "So, Terry, what did you plan to do about that?" And then, "So, Terry, what do you think will happen next?"

Harvey was **always** making decisions for the future vs. the present, and he taught me that was a pretty good plan. Try those two questions on yourself the next time you bump into a problem. Of course, I figured out the questions and saved my office some

long distance bills (yes, you used to have to pay for calls outside of town).

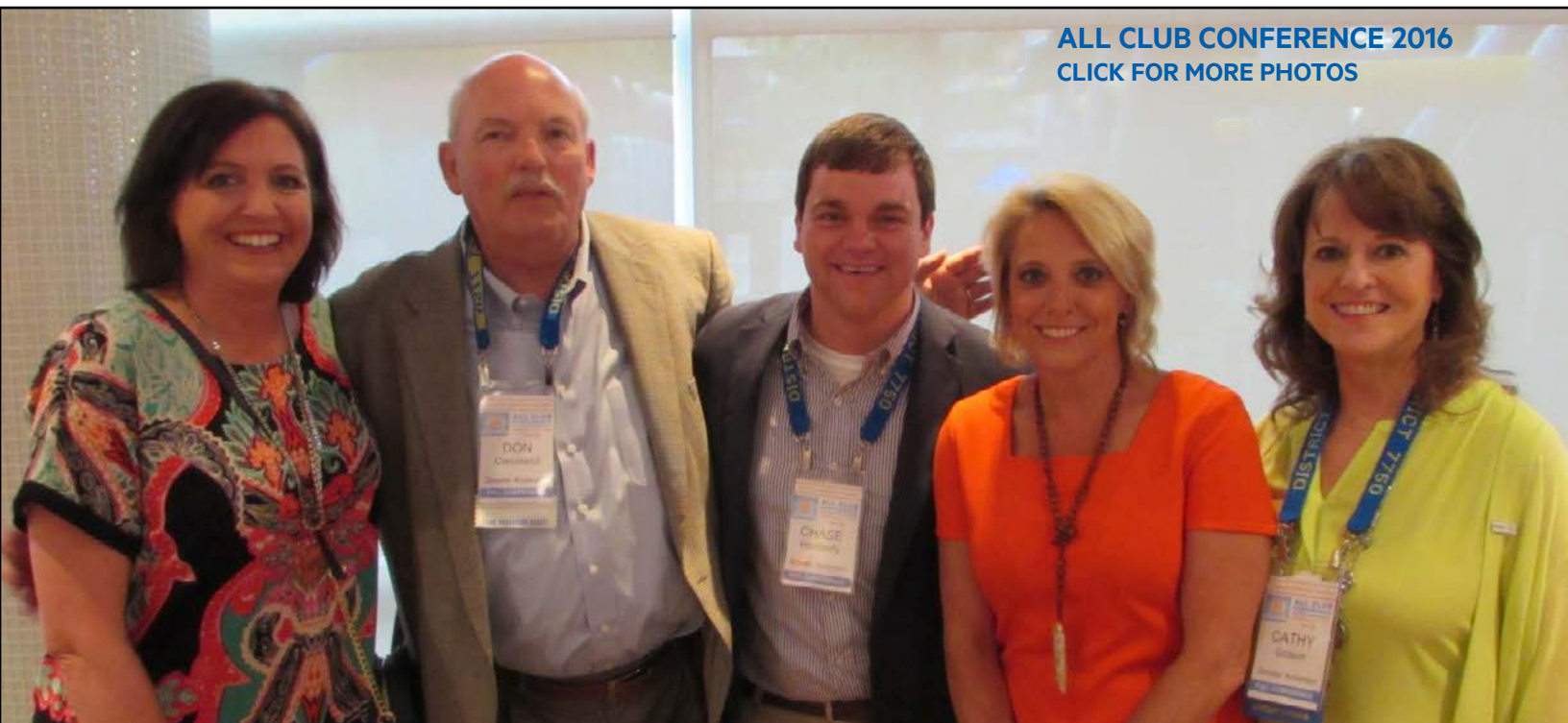
CONVENIENCE OR CONVICTION?

It's really a lot easier to make decisions on principle, values or conviction, rather than the circumstances of the moment. Ronald Regan was described once as an "Ideologue" -- a person driven more by ideas and values than anything else. And it served him well as a world leader and as a respected American for decades. Peter Drucker, one of the gurus of modern management once said, "Management is doing things right; leadership is doing the right things." In most of life, doing the **right** thing will work out better than doing the **convenient** thing.

CONSTRUCTIVE OR DESTRUCTIVE?

This isn't far from the 4th test of the Four Way Test, "Will it be beneficial to all concerned?"

So, think about writing these 3 tests on an index card and pinning it to your wall. the next time you need help with a decision, give them a try.



ALL CLUB CONFERENCE 2016
CLICK FOR MORE PHOTOS

Be a gift to **YOUTH**

BY DG TERRY WEAVER

May is Youth Service month on the Rotary calendar. Youth Service was added as a fifth Rotary Avenue of Service in 2010, dubbed “New Generations” the first such addition in decades. The avenue’s name was changed to Youth Service in 2013.

We usually think of the official youth service programs of Rotary, such as Interact, Rotaract, Rotary Youth Leadership Awards (RYLA), and Rotary Youth Exchange, all of which are alive and well in District 7750.

Interact and Rotaract got a boost this Rotary year with the chartering of six new Interact clubs. We have Rotaract clubs not only at several colleges and universities in the District, but also a young professionals Rotaract club in Greenville. The Council on Legislation, Rotary’s legislative body, met in April to affirm that a Rotaractor could also

be a Rotarian—a member of both a Rotary club and a Rotaract club. This emphasizes the idea that Rotaract, particularly a young professionals club, opens the door to full Rotary membership.

D-7750 clubs have come up with countless other Youth Service projects, such as Student of the Month and other student recognition programs, scholarships, and support of school programs in general. Then there are the hybrid projects such as Career Days and student mentoring, bridging the avenues of Youth Service and Vocational Service.

As you evaluate your club’s accomplishments for the current Rotary year and create a vision for the next, think about stepping up your game in Youth Service. Youth are, after all, the future of both America and Rotary.



More images from the All Club Conference.

7750 District budget approved for 2016-17; dues decreased by \$1

The district budget for 2016-17 was approved at the All Club Conference on April 24 as presented by District Finance Chair Tom Faulkner. DGE Lance Young wants to keep the budget transparent so all members know where the money is being spent in the district. Month-by-month statements are posted on the district website within a “District Budget” link on the Publications page.

There are several adjustments from the previous year’s budget that you should feel good about:

- District dues are being RE-

DUCED by \$1 per member per year. “This is the first time this has happened as far as we know, and made possible by our clubs’ extraordinary success in growing membership this past year”, according to DGE Lance.

- A planned facelift of the D-7750 website, last reworked in 2004.
- Funding for club visits by the District Foundation Chair, District Trainer, CART Chair and Literacy Chair to assist clubs with these critical areas.

- Increases for Youth Service areas, such as RYLA and Youth Exchange

While funding the above, the overall budget is reduced by nearly \$6,000, in part from reduced travel costs for the District Governor and Governor-Elect attending the International Convention in Atlanta versus South Korea.

Please take the time to **review the budget**. Your District leadership is taking steps to maximize, streamline and make every dollar count for the good of Rotary.



GBRC Rotarians and CCES Interact students



Panel members responding to questions from Interact students.

Greenville Breakfast holds Career Roundtable with Interact Club

BY DAVID BRENNER, PRESIDENT
ROTARY CLUB OF GREENVILLE BREAKFAST

As a high school junior or senior what is on your mind, other than who you are going to the prom with and what you are going to wear? For many students at the Christ Church Episcopal School Interact Club (CCES) in Greenville, what to study in college and what career to pursue are important questions.

To help facilitate that thought process, the Greenville Breakfast Rotary Club held a career roundtable discussion with members of its Interact Club at CCES. Seven members of the Breakfast Club with various vocational experiences participated. Our objective was to have different career experiences on the panel so we could share those with the Juniors and Seniors and answer their questions.

Eighteen Interact members

participated in the discussion. The event was held at the Christ Church Upper School during the students' lunch period. The Interact students questioned all the panel participants. One area that generated many questions dealt

**Christ Church Episcopal School
Interact**
*Sponsored by Rotary Club
of Greenville Breakfast*



with International business. The students had a keen interest in the importance of learning different languages and what it was like to work in different countries.

The students had a constant flow of questions for the panel and the time went by quickly. Many of the Interact club members followed up with the panel members with more questions after the

Roundtable. Olivia Thurmond, President of the Interact Club, thanked all the panel members for making time in their day to come to CCES and participate in the roundtable with the Interact Club.

It is debatable who enjoyed the roundtable more, Interact members or the Rotarians. It was a fun and rewarding experience for both.

Following the roundtable two of the Interact members took time to give the Rotarians a tour of their school. They introduced the Rotarians to the Headmaster, Leonard Kupersmith, who thanked the Greenville Breakfast Rotary Club for its support of the Interact Club. Leonard expressed interest in the roundtable discussion and spent considerable time talking with the Rotarians.



ALL CLUB CONFERENCE 2016
CLICK FOR MORE PHOTOS



Powdersville Interact helps with D7750 water projects

President Ann Ludlow of the Powdersville Interact Club hands DGE Lance Young a check for more than \$370 to go toward another D-7750 water project in Honduras. The students conducted several fundraising events to help with the ongoing effort for clean water in Central America. The Powdersville Interact Club is sponsored by the Greenville Evening Rotary Club.

Powdersville

Interact



Sponsored by Rotary Club
of Greenville Evening

Mead Hall Interactors meet RIPE John Germ in Augusta

Mead Hall Episcopal School Interactors Katarina Zotovic and Max Zollinger attended a multi-District Rotary meeting in Augusta, GA, where RI President-elect John Germ was the featured speaker.

The new Interactors were excited to meet John and his wife Judy along with other Rotarians and students from throughout the Southeast.

They especially enjoyed meeting the foreign students from Sri Lanka, England and Hungary. Katarina and Max exchanged contact information with them in the hope that one day they might meet again, possibly on an international project.

PDG Rich Waugh, a member of the Aiken-Sunrise Rotary Club, invited the new Interactors to attend this special multi-District event. What a great opportunity for this newly formed Interact Club!



Katarina Zotovic, Mead Hall Interact president, and Max Zollinger, Mead Hall Interact Chairman of Community Service, with John and Judy Germ.

Mead Hall

Interact



Sponsored by Rotary Club
of Aiken Sunrise



Helping in the concession stand were Steve Rushton, left, and Wayne Frady while Neal Nimmons, right, takes an order from a young track and field fan at the Golden Corner Tri-State Relays at Seneca High School.



Golden Corner has successful track and field event

Seneca High School won both the boys and girls overall titles at the Golden Corner Tri-State Relays held at Seneca High School.

Easley, Daniel, Walhalla and Pendleton high schools in the boys competition and Daniel, Walhalla and Pendleton high schools in the girls events were also strong competitors.

The fund-raising event will support Golden Corner Rotary Club projects including Rotary Youth Leadership Academy and the Back Pack Food program.

Major donors included Jeff Bright and WFBS FM radio 107.9, Orange and White sports publication of the Independent Maill Stencil, Cooley, Estep and Stampy; Oconee Federal Savings and Loan; Seneca Light and Water; Vic Holley and Foothills Insurance Agency; Eddie Perry and Golden Corner Flying Club; Drs. Martin and Hare, DDS; Lorraine Harding Real Estate; Sherri Orr and Frady's Moving and Storage; Gene Williams Family; Oconee Adult Education; Cammie Kaiser and Family, Seneca Rotary Club and Westminster Rotary Club.



Seneca Golden Corner Rotary Club president Eddie Perry, right, and Caryl Kaiser set up for the elementary school runners at the Golden Corner Tri-State Relays at Seneca High School.

Duck Derby is May 7 in Greenville

Up to 10,000 rubber ducks will be released in the Reedy River May 7 in Greenville. The Duck Derby, sponsored by Greenville Evening Rotary Club, raises money for many local charities that focus on providing education and well-being for children and families.

The planning for the event began almost a year ago. The adoption papers are printed and ready to go by the beginning of March and at that point all club members are involved. Duck Adoption teams are trained, papers are distributed, Facebook posts, email blasts, appearances around town including at the Greenville Swamp Rabbits and the Home & Garden Show, all focused on getting as many ducks adopted as possible so that the charities get all they wish for.

In the past the charity recipients have included Shriners Hospital for Children, Greenville Area Interfaith Hospitality Network, the Mauldin Miracle League, Early Act First Knight, Girls on the Run, and the Carolina Youth Symphony. The Greenville Evening Rotary Club also supports a water project in Honduras and PolioPlus.

Before the 2:30 p.m. race starts, the fun will be in Falls Park. Retro Vertigo and Kelly Jo and Buffaloe will be the musical performers. TimTv will be there with his Magic Cirkus. There will be games and activities for the kids, and it is all free. But to win the grand prize, of a year's worth of groceries from Publix, you will have to adopt a duck. You can get your ducks in the park, or you can adopt online at duckrace.com/Greenville.

ACC Silent Auction raised \$8,050 for polio

BY AMELIA NELSON, ROTARY CLUB OF GREATER ANDERSON
D7750 POLIO CHAIR

Thank you to the Rotarians and spouses who participated in the Silent Auction at our All Club Conference whether you donated an item(s) or bid on an item(s). Together we raised \$8,050 for Polio – or \$24,000 with the Gates Foundation match of two to one. That is 170,000 vaccinations! Or 170,000 children saved from Polio. We are making progress with eradicating the World of Polio and you helped put us this much closer.

There was a new method for bidding online through BidPal. I hope you liked this process as Butch Cowart worked hard to set it up – and monitor. Give us your feedback at amelianelson007@gmail.com.

UPI reported on April 17 that a “new polio vaccine was rolled out worldwide. The vaccine switch, 18 months in the planning, is expect-

ed to improve the match between the viruses that remain in the wild and the vaccine that suppresses them. If all goes as planned, the new vaccine will improve children’s immunity to wild-type polio while removing their vulnerability to a variant of the disease that can be accidentally caused by the vaccine itself.

“The Global Polio Eradication Initiative announced Sunday 155 countries will stop using the trivalent oral polio vaccine between April 17 and May 1, which protects against three strains of wild polio virus, and Types 1 and 3,” AllAfrica.com reported.

“We’re closer than ever to ending polio worldwide, which is why we are able to move forward with the largest and fastest globally synchronized vaccine switch ever,” said Michel Zaffran, director of Polio

Eradication at the World Health Organization. “It is a massive undertaking, but it is

testimony to how much progress is being made toward achieving a lasting polio-free world and to the commitment of all countries to make this dream a reality.”

“The new vaccine is expected to particularly help the most vulnerable to infection, the Global Polio Eradication Initiative said in a press release from its partners, which include Rotary International, the World Health Organization and the U.S. Centers for Disease Control and Prevention.”



UPCOMING Events of interest to 7750 Rotarians

May 29 - June 1	Seoul	International Convention in Seoul, Korea
June 23	Greenville	Awards & Installation Banquet
June 24-25	Cary, NC	Zone 33 Training Seminar
July 12	DG Lance Young begins official visits	Fair Play
Sept. 17	RLI	Myrtle Beach
Oct. 7	RLI	Charlotte
Oct. 13-16	Zones 33-34 Institute	Charlotte
Oct. 29	RLI	Duncan
Feb. 3-4	All-Club Conference, Foundation Dinner, Training Seminars, Pre-PETS	Greenville

Major COL change:

Clubs granted more flexibility in meeting requirements

Rotary's 2016 Council On Legislation met in Chicago April 10-15 to consider proposed changes to the policies that govern the organization and its member clubs. It is said that this Council may have been the most progressive ever based on the enactments it adopted. Here are some of the highlights of what was adopted.

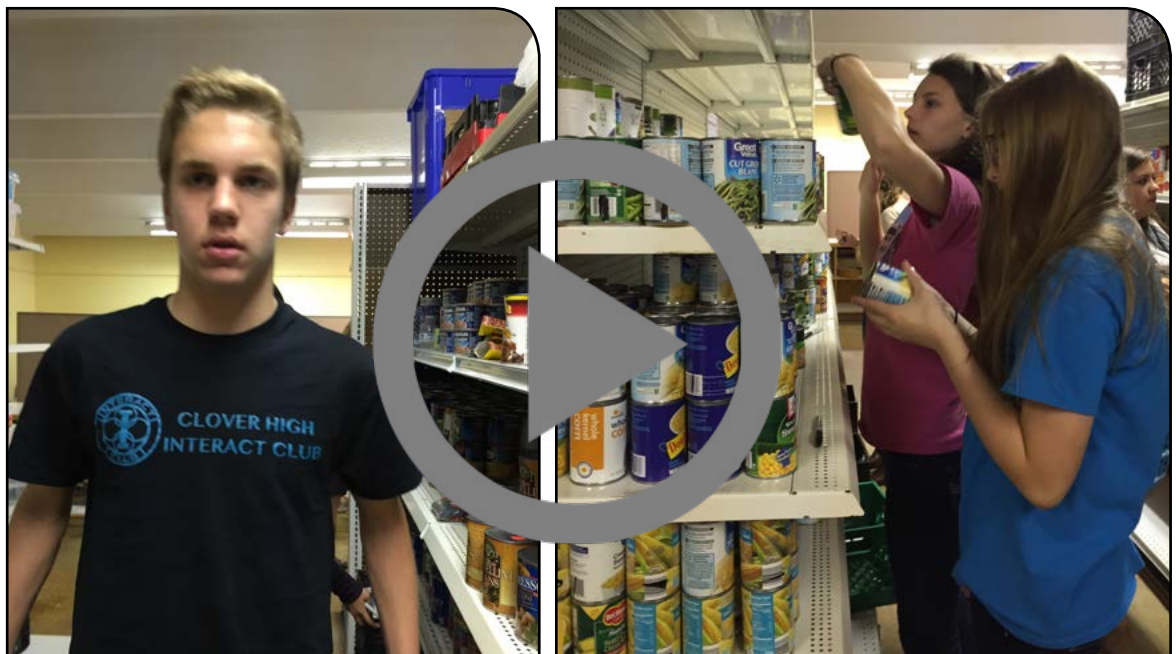
- Clubs were granted more flexibility in setting meeting schedules and attendance requirements. In addition, membership requirements and classifications have been eliminated and are now left up to the club. The only requirement is that clubs meet at least twice a month.
- Members are no longer required to meet six membership requirements but now must be of good character, with leadership skills in their business and community and have a willingness to serve their community.
- A somewhat controversial decision was to increase dues by \$4/year beginning in Rotary year 2017-18.. As explained, current financial conditions require the increase or RI will not be able to continue the services being requested by clubs and districts and will not be able to maintain mandated reserves. Any reference to admission fees will be removed from the bylaws.
- To free the Council On Legislation to concentrate on enactments, a Council On Resolutions will be formed to meet annually electronically. The District's selected delegate will serve on both councils for three years. This should result in significant cost savings.
- Rotaractors can now become members of a Rotary club while still being a Rotaract member. Hopefully, this will bring more young people into Rotary.
- The Council established a standing committee on membership and changed the composition of the Audit and Strategic Planning committees to give non-Board/Trustee members more voice.
- To be eligible to become a "Rule of 85" member, the Rotarian must have been a member for more than 20 years.
- Clubs must publish their board minutes within 60 days of their meeting and the club Treasurer is now a member of the club board.

Unless otherwise specified (e.g., dues increase), all adopted enactments become effective July 1.

If you have any questions, please contact PDG Rich Waugh, our District's Representative, at rawaugh317@bellsouth.net or at 803-648-0417.

Clover Interact VIDEO

Jimmy Roach talks about the successful 275 member Interact Club at Clover High School. Interact is sponsored by the Rotary Clubs of Clover and Lake Wylie. Jimmy is also the D7750 Interact Chair. Click the play button to watch.



Rotary Club of Greenville celebrates its centennial with Peace and Conflict Resolution Seminar

BY JUDITH PRINCE
ROTARY CLUB OF GREENVILLE

As part of its Centennial celebration, the Rotary Club of Greenville in conjunction with the World Religions Symposium at Furman University held a Peace and Conflict Resolution Seminar on April 13 at Furman University. About 185 Rotarians, church leaders, lawyers, law enforcement officials, students, and others explored peace and conflict resolution from several viewpoints.



Bawa Jain, above, Secretary General of the World Council of Religious Leaders, was the keynote speaker. He described religious diplomacy as “the influence of religion to solve problems and address changes that are confronting humanity.” He challenged the audience to invest in understanding the faiths of people who live in their community in terms of their holidays, beliefs, cultural aspects, nuances and sensitivities. Jain concluded that ego is the biggest barrier in creating solutions to conflict.

A panel of religious leaders from five faiths—Buddhism,



Christianity, Hinduism, Islam, and Judaism—focused on the essential role of their faiths in creating peace. Photo at bottom of page.

Ken Morgan, former Vice Chair of the Rotary Peace Center Committee, talked about the contributions around the world of graduates of Rotary International Peace Centers.



Norbert and Gerda Bikales, above, told of their journey of survival during the Holocaust. Dr. Norbert Bikales said that one lesson today from the Holocaust is that the threats of evil leaders must be taken seriously, no matter how outrageous they may seem to us.

The Applied Theatre Center group presented three interactive exercises that were thought provoking and provided an opportunity for participants to apply practical solutions to potential conflicts.

A few insights gained by participants in the peace seminar included the following:

1. Promoting peace and avoiding conflict begins with the self;
2. Taking time to understand the other side's perspective is crucial in building peace;
3. Conflict does not have to happen; Building on commonalities is important;
4. Lack of knowledge of other cultures and religions impacts our ability to understand and act with insight and love;
5. Work toward peace is real and ongoing as we face an increasingly dangerous world dominated by fear and talk of war;
6. The universal spiritual feeling of human oneness and unity can unite us all.



**DISTRICT FOUNDATION CHAIR**

Lorraine Angelino
118 Leyland Court, Greenwood, SC 29649
864.554.0598
dg2013@rotary7750.org



EVERY
ROTARIAN
EVERY
YEAR

2015-16 District 7750 Rotary Foundation Giving

through 4/26/2016 | 83% of year complete

Annual Fund Goal	\$ 405,771 (53 of 53 – 100%)	DDF Transfer – Polio	\$ 30,111
Annual Fund Total	\$ 292,720 (72% goal)	Major Gifts	2
Annual Fund Per Capita	\$ 111.30 (2630 members)	Major Donors	5 – Level 1 2 – Level 2 1 – Level 3
Endowment Fund	\$ 31,942	Paul Harris Fellows	269
PolioPlus Goal	\$ 99,630 (53 of 53 – 100%)	Paul Harris Society 10+1	81
PolioPlus	\$ 47,115 (47.29% goal)	Paul Harris Society Members	113
Total Giving	\$ 371,778	Bequest Society	5
\$0 AF Clubs	0 (53 of 53 – 100%)	Benefactors	44
\$0 Polio Clubs	10 (43 of 53 – 81.13%)	Rotary Direct	85
		EREY	1,699 (64.60%)
		Sustaining Members	824 (31.33%)



The Rotary Dinner Theater was held on Thursday, April 21 at Union County High School. This is a fundraiser that the Union club hosts for the Union County High School Drama Department. The UCHS Drama Department showed off their vocal skills with samples from the musical The Little Mermaid at the club meeting on April 12.



William Jeter, left, introduced Gary Peters, who gave an informative presentation about the Indian Creek Wildlife Habitat Restoration Initiative in Newberry and Union counties.



Lewis Jeter, left, introduced David Eubanks, who spoke about the importance of education and the Union County Tuition Scholarship. The UCTS pays all remaining USC Union and Spartanburg Community College (Union campus)

tuition and fees once students' federal and state financial aid is applied to their bills.



"I battled Bad Creek" will support Walhalla's work in Haiti

BY STEVE SOKOL, ROTARY CLUB OF WALHALLA

The Rotary Club of Walhalla has been making monthly donations to provide food and medicine to a village in Haiti through a project it is calling Hope for Haiti. Now the club wants to provide a fresh water catchment system to the village.

We will send a group of Rotarians to Haiti to oversee the construction of the facility and ferment relations between the club and the village. Any funds in excess of the requirements will be consolidated with the funds currently being sent to aid the village.

The planning has been done, and a fundraiser called "I Battled Bad Creek" has been scheduled for May 14. The fundraiser is a 5K run-walk at Duke Energy's Bad Creek power-generating facility. In addition to power, Bad Creek also provides scenery unsurpassed in the upstate with a certified road route for a challenging course. The facility is 8 miles north of Salem just off Highway 130. (Address is 151 Bad Creek Rd., Salem)



The Bad Creek Hydroelectric Station is a 1,065-megawatt pumped-storage facility located in Oconee County, eight miles north of Salem. The four-unit station began generating electricity in 1991, and is the largest hydroelectric station on the Duke Energy system. It is named for the two streams, Bad Creek and West Bad Creek, which were dammed to create the Bad Creek reservoir.

The entry fee is \$25 until May 1, after which it will increase to \$30. Each runner will get an event T-shirt. Additional T-shirts will be available for sale. Standard amenities will be available during the race.

On-site registration will begin at 8 a.m. with the race starting at 9. Entries will be divided into age and gender groups, with picture-plaques awarded to each winner and each runner-up will be provided their picture.

We are excited about this

race and think it will give a good runner quite a challenge and will provide an excellent visual backdrop. The spotting of deer, turkey, fox and occasionally even a bear will be a bonus, and because of the altitude, much of the flora may still be in bloom. Join us for a really spectacular event.

Complete information is available at i-battled-bad-creek.com.

Walhalla became interested in working in Haiti because one of its members, Jordanie Mertil, is a Haiti native.



The Union County High School Interact Club led the Rotary Club of Union meeting April 12.



Interact members of Union County High School donated \$400 to the Miracle League of Union County for their all-inclusive playground.

Union County High School
Interact

Sponsored by Rotary Club of Union



Clover Pancake Supper means scholarships for local students

Clover Rotary Club held its second annual pancake supper to support its efforts to provide scholarships to students at Clover High School. Over 400 tickets were sold and place mat ads were purchased by almost every business in the Clover community. Nearly every member of the Clover Club participated by cooking the food, serving the plates, or waiting tables. "We are very proud of our club participation and community support of this endeavor," said club member Jimmy Roach. See all the photos by clicking here or on the photo at right.



First Annual Rotary Centennial Cup Golf Tournament **Green Valley Country Club, Greenville**

June 20

Benefiting Rotary Charities

Format will be Captains Choice Individual Players

Breakfast available in the club dining room at 8:00am

Shotgun start at 9:00am

Special Early Bird Rate (4 players - \$340)

Four Players after Early Bird Rate Expires (4 players - \$380)



ROTARY
Centennial
CUP

Rotary Has Heart projects

(Let DG Terry know about your project)

If you have completed your 2016 project that you are tagging for Rotary Has Heart, please let DG Terry know what your project was and what publicity you received.. You do not have to organize a specific project in order to get zone credit for participating in Rotary Has Heart. Each Governor in Zone 33 will select what he or she considers to be the best Rotary Has Heart community service project with related publicity in his or her district for Zone recognition.



7750 Membership & Attendance for March

Club	Members 7/1/2015	Current Members	Change	Meetings Held	Attend. %
Abbeville	44	47	3	5	67.00
Aiken	176	179	3	4	74.31
Aiken Sunrise	41	42	1	5	78.21
Anderson	81	81	0	2	55.48
Batesburg-Leesville	14	14	0	4	71.43
Blacksburg	10	14	4	5	74.00
Chester	52	55	3	5	54.78
Clemson	89	94	5	3	68.77
Clemson-Calhoun	24	27	3	4	88.78
Clinton	29	31	2	4	59.29
Clover	24	21	-3	5	65.45
E-Club of the Carolinas	26	31	5	4	76.61
Easley	53	53	0	5	78.55
Emerald City	55	58	3	5	75.62
Fair Play	12	14	2	5	71.40
Fort Mill	74	82	8	4	36.59
Fountain Inn	37	34	-3	4	73.02
Gaffney	62	67	5	5	68.77
Golden Strip Sunrise	14	14	0	5	71.42
Greater Anderson	60	66	6	5	68.22
Greater Greer	15	15	0	5	72.00
Greenville	275	274	-1	2	56.14
Greenville Breakfast	18	20	2	3	60.00
Greenville East	21	21	0	4	51.19
Greenville Evening	34	41	7	3	66.50
Greenwood	107	117	10	2	69.79
Indian Land	34	26	-8	5	62.50
Inman	20	20	0	0	0.00
Lake Wylie	20	23	3	5	80.37
Lancaster	67	63	-4	5	81.00
Lancaster Breakfast	67	57	-10	5	60.85
Laurens	49	50	1	4	78.14
Mauldin	29	31	2	5	71.64
Newberry	70	73	3	2	77.00
North Augusta	15	19	4	5	70.00
North Greenville	36	36	0	4	65.85
North Spartanburg	45	47	2	3	76.03
Pickens	43	45	2	5	77.14
Pleasantburg	41	44	3	4	80.95
Rock Hill	103	101	-2	2	51.27
Seneca	38	42	4	4	69.93
Seneca Golden Corner	20	18	-2	5	78.41
Simpsonville	47	47	0	5	95.96
Spartan West	25	22	-3	5	64.91
Spartanburg	187	195	8	5	47.17
The Foothills	16	15	-1	2	60.00
Twin City	15	18	3	5	67.82
Union	47	48	1	5	56.77
Walhalla	33	31	-2	4	71.29
Westminster	35	40	5	5	80.00
Winnsboro	34	30	-4	0	0.00
Woodruff	15	16	1	5	56.00
York	32	36	4	5	73.20
TOTALS	2630	2705	75		66.1
53 of 54 clubs reporting					

Rotary



This is the correct Rotary logo. It, and other approved versions, can be found easily at BRAND CENTER, <https://brandcenter.rotary.org>. You can see it used throughout this newsletter with club names. If your club is still using the old blue and gold logo, please update your materials to the current Rotary branding guidelines.



The 2016-17 RI theme.

JUNE NEWSLETTER

Deadline

June 1

Send your items to newsletter editor
PDG Sue Poss
pdgsueposs@gmail.com

The June newsletter will be published a little later than usual because of the convention in Seoul. Send your items as they are available but no later than June 1.

Membership Champions (new members and their sponsors in March)

New Member	Club	Sponsor	Classification
Appelhans, Richard C. (RICHARD)	Chester		Franchisee Owner
Bailey, Greta Sanders (GRETA)	Union	Lynne Burnett	
Bain, Angela H. (ANGELA)	Chester	William L. Marion	
Beaty, Rufus (RUFUS)	Greenville	Phillip Kilgore, Don Koonce	Attorney
Briggs, Coty (COTY)	Woodruff		
Crain, Brad (BRAD)	Aiken Sunrise	Elizabeth Cahill	Banking-Management
Gresham, Debbie (DEBBIE)	Mauldin	Timothy Andrew Brett	
Guest, Austin (AUSTIN)	Greenville	Myles Golden, Don Koonce	Financial Advisor
Hane, Andrew W. (ANDY)	Rock Hill	Martin E. Goode	Sales Manager
Harbin, Matt C (MATT)	Greater Anderson	James H. Lindley	Finance
Harnois, Suzanne M. (SUZANNE)	Rock Hill	Ray E. Marshall	Accounting/Financial Services
Hart, Virgil Eugene (GENE)	Aiken	Jennifer Ann Hart	Environmental
Heintz, Debra M. (DEBRA)	Rock Hill	Debbie Abels	Non-Profit
Hudson, Chad E (CHAD)	Blacksburg		education administration
Hunter, Curtiss (CURTISS)	Union	Torance Inman	
Johnston, William E. (BILLY)	Rock Hill	Lindsay W Walker	Financial Advisor
Jones, Hayden (HAYDEN)	Pleasantburg	William McCann	
Jones, Richard M (DICK)	Pleasantburg	John F. McAfee	
Kirby, Kendall J (KENDALL)	Blacksburg	George A. Kirby Sr.	Funeral Director Apprentice
Leonard, Keith (KEITH)	Greenville Evening		
Luckadoo, Teddy (TEDDY)	Batesburg-Leesville	Angela Penley Rye	Town Manager
Mlano, Phillip Steven (STEVE)	Aiken	Ahmed F. Samaha	Law Enforcement
Miller, Sharmel (SHARMEL)	Abbeville	Scott White	
Mills, Stacey (STACEY)	Greenville	Judith S. Prince, Don Koonce	Executive Director
Miskelly, Tracy M (TRACY)	York	R. Grier Sandifer Jr.	
Moore, Deborah H. (DEBBIE)	North Augusta		
Morris, James Byron (BYRON)	Spartanburg	Kyle Thomas Clelland	Past Service
Nix, Robert Keith (ROBBIE)	Anderson	Rick L. Adkins	Financial Services
Overstreet, Ray C. (RAY)	Fountain Inn		
Phenicie, Chris N (CHRIS)	Blacksburg	Megan A. Anderson	College administrator
Ramey, Brian (BRIAN)	Westminster	Marion Lyles	
Reynolds, Beth (BETH)	Clemson	John Corwin Peters	
Rodgers, Cindy (CINDY)	Lancaster Breakfast		Personal Care Provider - Stylist
Stroupe, Jenny C (JENNY)	Blacksburg	David Y. Roark	Education-Hearing Specialist
Tate, Joseph W. (JOE)	Chester	Michael P. Shaffer	Apprentice Funeral Director
Thompson-King, Phillip A. (PHIL)	Chester	Tony E. Pope	Director Sewer District
Tiddy, Tracy Welsh (TRACY)	Pleasantburg	John Travis Seward	
Tripp, Christy A (CHRISTY)	Greater Anderson	Timothy Chase Heatherly	
Tuten, Katie (KATIE)	Mauldin	Timothy Andrew Brett	Health Care / Corporate
Wilson, David (DAVID)	Woodruff		

FOUNDATION AND MEMBERSHIP PAGES AHEAD: Check the trends

Following this page are several pages of information on Foundation giving and membership trends.

Rotary District 7750
Membership Gain & Rotary Foundation
Monthly Progress Report

A r e a	Club	Current Members 4/26/2016	Member Gain 4/26/2016	AF Actual 2014-15	AF Goal 2015-16	% of AF Goal Achieved 2015-16	AF Per Capita 2015-16	AF MONTH	AF YTD 2015-16	Polio Total 2014-2015	Polio YTD 2015-16	Polio Per Capita 2015-16	Polio Goal 2015-16	Polio % of Goal
1	Anderson	81	0	9,127	\$12,500	10.8%	\$17	\$10	\$1,350	\$1,839	\$1,623	\$20	\$3,200	50.7%
1	Clemson	96	7	6,470	\$4,875	226.7%	\$124	\$293	\$11,052	\$1,400	\$325	\$4	\$1,000	32.5%
1	Clemson-Calhoun	27	3	2,988	\$3,600	63.2%	\$95	\$260	\$2,275	\$1,840	\$1,255	\$52	\$1,500	83.7%
1	Greater Anderson	69	9	6,003	\$5,650	131.5%	\$124	\$85	\$7,430	\$3,000	\$40	\$1	\$2,000	2.0%
	AG Crossie Cox	A-1 Totals	19	24,588	\$26,625	83.0%	\$87	\$648	\$22,107	\$8,079	\$3,243	\$13	\$7,700	42.1%
2	Fair Play	14	2	1,170	\$1,100	36.4%	\$33	\$0	\$400	\$10	\$0	\$0	\$100	0.0%
2	Seneca	41	3	5,236	\$6,700	121.7%	\$215	\$185	\$8,153	\$1,840	\$1,899	\$50	\$1,700	111.7%
2	Seneca Golden Corner	18	-2	2,350	\$3,120	57.1%	\$89	\$85	\$1,780	\$247	\$648	\$32	\$640	101.3%
2	Walhalla	31	-2	975	\$12,400	22.5%	\$84	\$0	\$2,787	\$120	\$0	\$0	\$25	0.0%
2	Westminster	41	6	5,037	\$4,000	134.3%	\$153	\$240	\$5,370	\$1,150	\$1,870	\$53	\$1,750	106.9%
	AG Steve Bahan	A-2 Totals	7	14,767	\$27,320	67.7%	\$134	\$270	\$18,490	\$3,367	\$4,417	\$32	\$4,215	104.8%
3	Greenville	276	1	57,912	\$48,450	79.0%	\$139	\$50	\$38,295	\$5,300	\$2,590	\$9	\$5,000	51.8%
3	Greenville Breakfast	20	2	4,917	\$3,100	129.7%	\$223	\$502	\$4,021	\$10	\$0	\$0	\$900	0.0%
3	Greenville East	21	0	3,837	\$4,850	49.0%	\$113	\$100	\$2,375	\$1,150	\$245	\$12	\$1,100	22.3%
3	North Greenville	36	0	3,560	\$4,400	79.1%	\$97	\$0	\$3,480	\$1,010	\$191	\$5	\$1,850	10.3%
3	Pleasantburg	44	3	6,889	\$4,600	146.1%	\$164	\$169	\$6,721	\$3,202	\$3,415	\$83	\$2,200	155.2%
	AG Beth Padgett	A-3 Totals	6	77,115	\$65,400	83.9%	\$140	\$821	\$54,891	\$10,672	\$6,441	\$16	\$11,050	58.3%
4	Inman	20	0	2,100	\$2,850	57.9%	\$83	\$0	\$1,650	\$10	\$111	\$6	\$1,000	11.1%
4	North Spartanburg	47	2	3,545	\$8,250	47.0%	\$86	\$100	\$3,875	\$1,309	\$0	\$0	\$2,750	0.0%
4	Spartan West	22	-3	3,953	\$4,200	85.0%	\$143	\$95	\$3,570	\$792	\$855	\$34	\$1,400	61.1%
4	Spartanburg	194	7	5,180	\$18,250	7.4%	\$7	\$10	\$1,350	\$10,263	\$1,130	\$6	\$9,000	12.6%
	AG Franca Meloncelli	A-4 Totals	6	14,778	\$33,550	31.1%	\$38	\$205	\$10,445	\$12,374	\$2,096	\$8	\$14,150	14.8%
5	Blacksburg	15	5	10	\$2,300	23.0%	\$53	\$0	\$530	\$10	\$0	\$0	\$50	0.0%
5	Clover	21	-3	3,772	\$6,000	40.8%	\$102	\$950	\$2,445	\$3,081	\$2,490	\$104	\$4,000	62.3%
5	Gaffney	66	4	3,733	\$3,450	100.6%	\$56	\$84	\$3,471	\$100	\$160	\$3	\$100	160.0%
5	York	35	3	7,129	\$7,200	103.4%	\$233	\$2,489	\$7,445	\$1,174	\$630	\$20	\$1,500	42.0%
	AG Gene Moorhead	A-5 Totals	9	14,644	\$18,950	73.3%	\$109	\$3,523	\$13,891	\$4,365	\$3,280	\$26	\$5,650	58.1%
6	Fort Mill	79	5	20,576	\$15,000	65.8%	\$133	\$435	\$9,865	\$1,852	\$50	\$1	\$2,000	2.5%
6	Indian Land	26	-8	1,515	\$4,001	66.9%	\$79	\$65	\$2,675	\$285	\$0	\$0	\$300	0.0%
6	Lake Wylie	24	4	2,712	\$3,000	68.8%	\$103	\$30	\$2,063	\$542	\$355	\$18	\$700	50.7%
6	Rock Hill	101	-2	5,624	\$8,020	106.9%	\$83	\$0	\$8,577	\$1,711	\$30	\$0	\$2,550	1.2%
	AG Chad Bordeaux	A-6 Totals	-1	30,427	\$30,021	77.2%	\$100	\$530	\$23,180	\$4,390	\$435	\$2	\$5,550	7.8%

A r e a	Club	Current Members 4/26/2016	Member Gain 4/26/2016	AF Actual 2014-15	AF Goal 2015-16	% of AF Goal Achieved 2015-16	AF Per Capita 2015-16	AF MONTH	AF YTD 2015-16	Polio Total 2014-2015	Polio YTD 2015-16	Polio Per Capita 2015-16	Polio Goal 2015-16	Polio % of Goal
7	Chester	55	3	3,800	\$3,250	21.5%	\$13	\$0	\$700	\$150	\$1,220	\$23	\$1,500	81.3%
7	Lancaster	63	-4	1,738	\$5,704	1.8%	\$1	\$0	\$100	\$510	\$70	\$1	\$1,500	4.7%
7	Lancaster Breakfast	63	-4	2,665	\$9,850	19.1%	\$28	\$85	\$1,881	\$10	\$100	\$1	\$1,500	6.7%
7	Winnsboro	30	-4	1,545	\$5,550	53.8%	\$88	\$5	\$2,985	\$250	\$0	\$0	\$1,500	0.0%
	AG Rebecca Melton	A-7 Totals	-9	9,748	\$24,354	23.3%	\$26	\$90	\$5,666	\$920	\$1,390	\$6	\$6,000	23.2%
8	Aiken	181	5	21,039	\$29,500	81.8%	\$137	\$170	\$24,120	\$3,853	\$3,790	\$22	\$9,500	39.9%
8	Aiken Sunrise	39	-2	5,490	\$10,839	45.4%	\$120	\$100	\$4,925	\$2,946	\$2,166	\$53	\$2,300	94.2%
8	Batesburg-Leesville	14	0	2,010	\$1,800	1.3%	\$2	\$0	\$23	\$1,382	\$880	\$63	\$600	146.7%
8	North Augusta	19	4	2,308	\$2,200	15.9%	\$23	\$0	\$350	\$760	\$295	\$20	\$500	59.0%
8	Twin City of Batesburg-Leesville	18	3	2,935	\$1,862	109.5%	\$136	\$85	\$2,039	\$500	\$247	\$16	\$750	32.9%
	AG Dan Rickabaugh	A-8 Totals	10	33,782	\$46,201	68.1%	\$121	\$355	\$31,457	\$9,441	\$7,378	\$28	\$13,650	54.1%
9	Abbeville	49	5	4,018	\$6,450	7.8%	\$11	\$0	\$500	\$10	\$0	\$0	\$1,075	0.0%
9	EClub of the Carolinas	32	6	4,879	\$6,600	63.1%	\$160	\$1,450	\$4,163	\$2,380	\$978	\$38	\$2,500	39.1%
9	Emerald City	58	3	12,346	\$23,800	106.5%	\$461	\$895	\$25,336	\$1,250	\$2,776	\$50	\$2,000	138.8%
9	Greenwood	117	10	9,740	\$13,450	79.7%	\$100	\$10	\$10,719	\$1,350	\$1,115	\$10	\$3,960	28.2%
	AG Andrew Hodges	A-9 Totals	24	30,982	\$50,300	80.9%	\$176	\$2,355	\$40,718	\$4,990	\$4,869	\$21	\$9,535	51.1%
10	Clinton	31	2	6,054	\$4,350	37.9%	\$57	\$0	\$1,650	\$1,200	\$40	\$1	\$1,200	3.3%
10	Laurens	50	1	6,605	\$7,200	70.1%	\$103	\$0	\$5,050	\$2,100	\$5,000	\$102	\$5,280	94.7%
10	Newberry	71	1	14,299	\$10,650	122.3%	\$186	\$1,100	\$13,028	\$1,350	\$1,850	\$26	\$2,000	92.5%
10	Union	48	1	7,288	\$7,350	71.6%	\$112	\$0	\$5,260	\$1,350	\$550	\$12	\$2,200	25.0%
	AG Buddy Smith	A-10 Totals	5	34,245	\$29,550	84.6%	\$128	\$1,100	\$24,988	\$6,000	\$7,440	\$38	\$10,680	69.7%
11	Fountain Inn	34	-3	1,010	\$4,500	70.0%	\$85	\$0	\$3,150	\$10	\$40	\$1	\$200	20.0%
11	Golden Strip Sunrise	14	0	470	\$700	48.6%	\$24	\$35	\$340	\$10	\$0	\$0	\$350	0.0%
11	Mauldin	29	0	5,028	\$3,750	92.4%	\$120	\$460	\$3,466	\$700	\$1,070	\$37	\$1,500	71.3%
11	Simpsonville	48	1	6,348	\$5,550	105.3%	\$124	\$2,361	\$5,844	\$2,000	\$2,000	\$43	\$2,000	100.0%
11	Woodruff	17	2	563	\$750	2.0%	\$1	\$15	\$15	\$10	\$15	\$1	\$100	15.0%
	AG Candy Surkin	A-11 Totals	0	13,418	\$15,250	84.0%	\$90	\$2,871	\$12,815	\$2,730	\$3,125	\$22	\$4,150	75.3%
12	Easley	53	0	8,010	\$9,150	87.4%	\$151	\$7,000	\$8,000	\$10	\$1,000	\$19	\$1,000	100.0%
12	Greater Greer	16	1	4,497	\$2,750	89.7%	\$164	\$417	\$2,467	\$1,117	\$150	\$10	\$500	30.0%
12	Greenville Evening	39	5	12,170	\$15,000	126.5%	\$558	\$340	\$18,980	\$2,700	\$750	\$22	\$3,000	25.0%
12	Pickens	45	2	6,542	\$6,400	50.0%	\$74	\$0	\$3,200	\$2,452	\$851	\$20	\$2,300	37.0%
12	The Foothills	15	-1	932	\$1,950	73.1%	\$89	\$0	\$1,425	\$10	\$0	\$0	\$500	0.0%
	AG Cathy Golson	A-12 Totals	7	32,151	\$35,250	96.7%	\$212	\$7,757	\$34,072	\$6,289	\$2,751	\$17	\$7,300	37.7%
	District 7750							\$0	\$0	\$0	\$250			
	Totals		83	330,643	\$402,771	72.7%	\$111.30	\$20,524	\$292,720	\$73,617	\$47,115	\$18	\$99,630	47.3%

Area Summary

		Member Gain 4/26/2016	AF Actual 2014-15	AF Goal 2015-16	% of AF Goal Achieved 2015-16	AF Per Capita 2015-16	AF MONTH	AF YTD 2015-16	Polio Total 2014-2015	Polio YTD 2015-16	Polio Per Capita 2015-16	Polio Goal 2015-16	Polio % of Goal
AG Crossie Cox	Area 1	19	24,588	26,625	83.0%	\$87.04	\$648	\$22,107	\$8,079	\$3,243	\$13	\$7,700	42.1%
AG Steve Bahan	Area 2	7	14,767	27,320	67.7%	\$133.99	\$270	\$18,490	\$3,367	\$4,417	\$32	\$4,215	104.8%
AG Beth Padgett	Area 3	6	77,115	65,400	83.9%	\$140.39	\$821	\$54,891	\$10,672	\$6,441	\$16	\$11,050	58.3%
AG Franca Meloncelli	Area 4	6	14,778	33,550	31.1%	\$37.71	\$205	\$10,445	\$12,374	\$2,096	\$8	\$14,150	14.8%
AG Gene Moorhead	Area 5	9	14,644	18,950	73.3%	\$108.52	\$3,523	\$13,891	\$4,365	\$3,280	\$26	\$5,650	58.1%
AG Chad Bordeaux	Area 6	-1	30,427	30,021	77.2%	\$100.35	\$530	\$23,180	\$4,390	\$435	\$2	\$5,550	7.8%
AG Rebecca Melton	Area 7	-9	9,748	24,354	23.3%	\$25.76	\$90	\$5,666	\$920	\$1,390	\$6	\$6,000	23.2%
AG Dan Rickabaugh	Area 8	10	33,782	46,201	68.1%	\$120.52	\$355	\$31,457	\$9,441	\$7,378	\$28	\$13,650	54.1%
AG Andrew Hodges	Area 9	24	30,982	50,300	80.9%	\$175.51	\$2,355	\$40,718	\$4,990	\$4,869	\$21	\$9,535	51.1%
AG Buddy Smith	Area 10	5	34,245	29,550	84.6%	\$128.14	\$1,100	\$24,988	\$6,000	\$7,440	\$38	\$10,680	69.7%
AG Candy Surkin	Area 11	0	13,418	15,250	84.0%	\$90.25	\$2,871	\$12,815	\$2,730	\$3,125	\$22	\$4,150	75.3%
AG Cathy Golson	Area 12	7	32,151	35,250	96.7%	\$211.63	\$7,757	\$34,072	\$6,289	\$2,751	\$17	\$7,300	37.7%
	Totals	83	330,643	402,771	72.7%	\$111.30	\$20,524	\$292,720	\$73,617	\$46,865	\$18	\$99,630	47.3%

Top Giving Clubs (Annual Fund)

Top Clubs by % of AF Goal Achieved

1	Clemson	227%
2	Pleasantburg	146%
3	Westminster	134%
4	Greater Anderson	132%
5	Greenville Breakfast	130%

Top Clubs by AF Per Capita

1	Greenville Evening	\$558.24
2	Emerald City	\$460.65
3	York	\$232.66
4	Greenville Breakfast	\$223.36
5	Seneca	\$214.54

Top Clubs by Total AF Giving

1	Greenville	\$38,295
2	Emerald City	\$25,336
3	Aiken	\$24,120
4	Greenville Evening	\$18,980
5	Newberry	\$13,028

Top Giving Clubs (Polio)

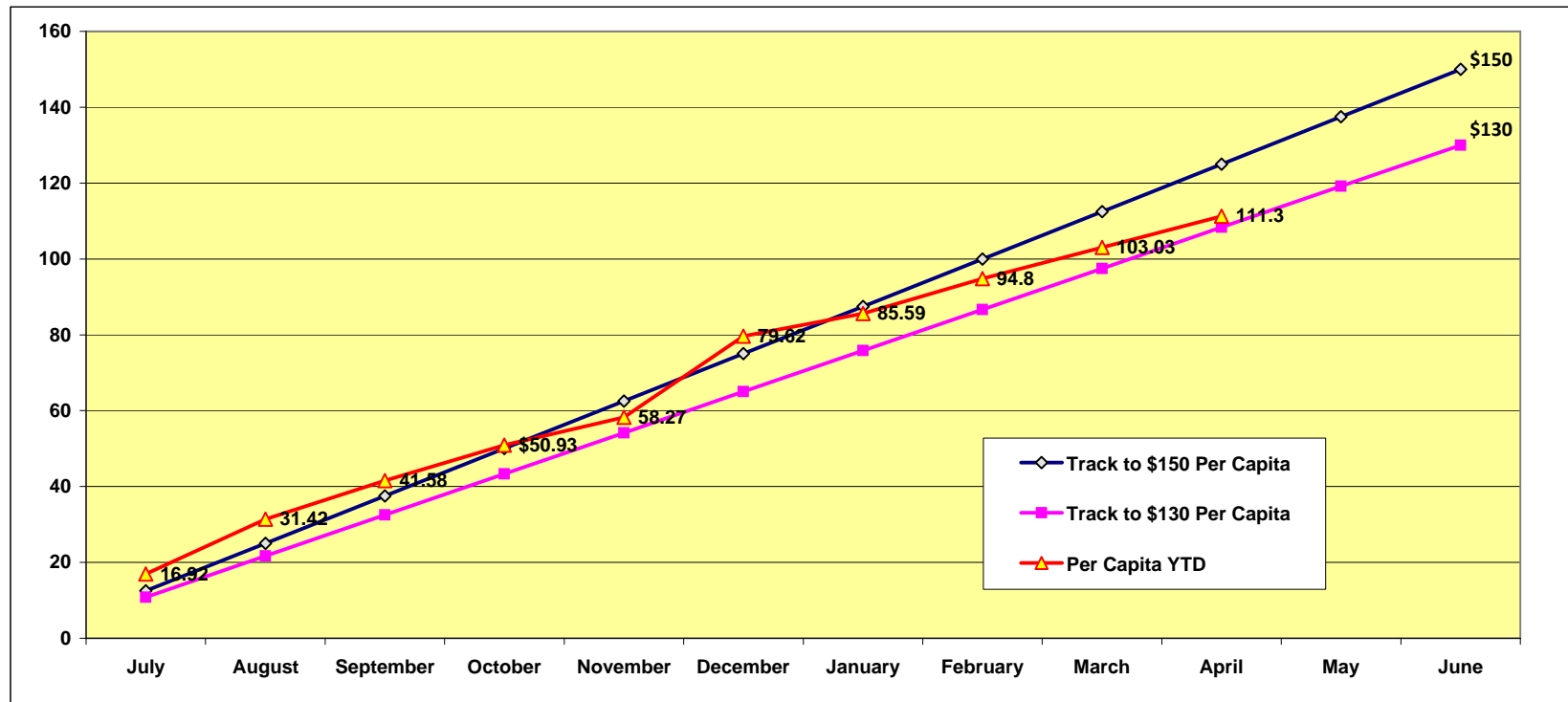
Top Clubs by % of Polio Goal Achieved

1	Gaffney	160%
2	Pleasantburg	155%
3	Batesburg-Leesville	147%
4	Emerald City	139%
5	Seneca	112%

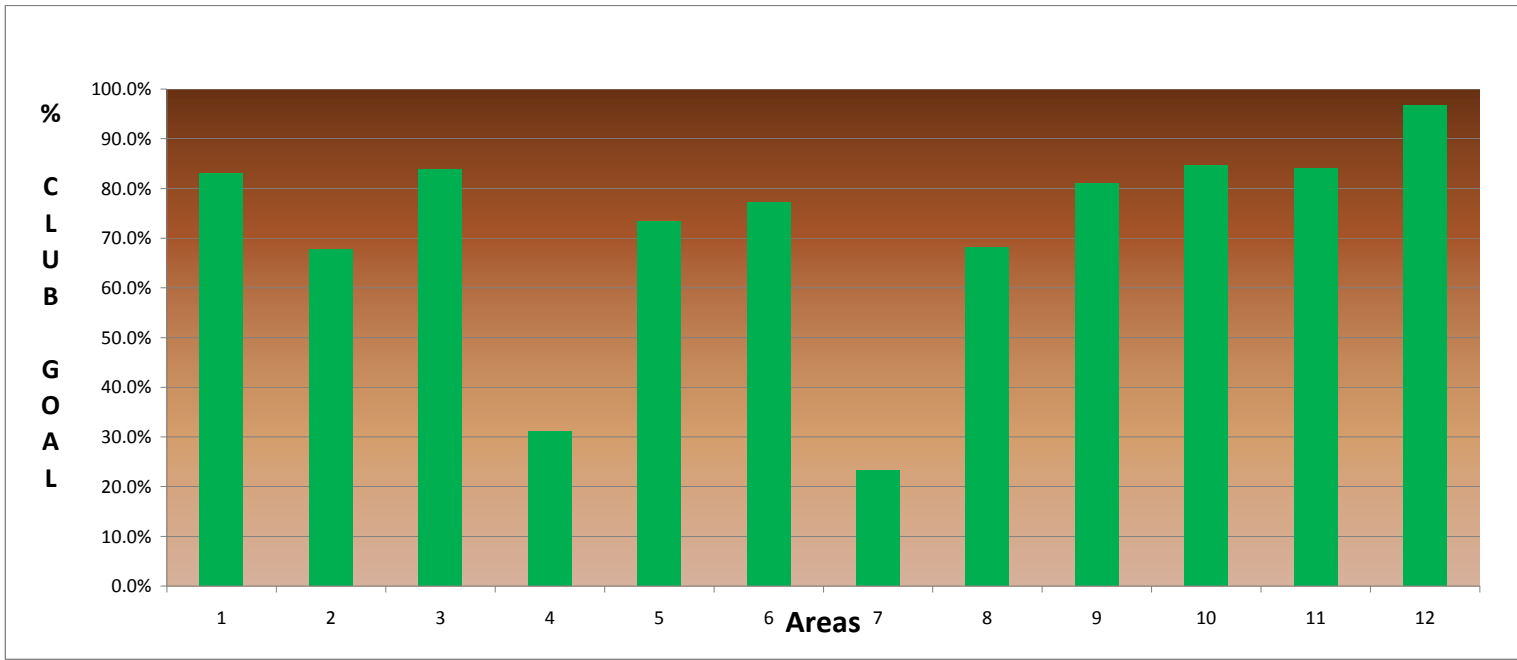
Top Clubs by Total Polio Giving

1	Laurens	\$5,000
2	Aiken	\$3,790
3	Pleasantburg	\$3,415
4	Emerald City	\$2,776
5	Greenville	\$2,590

14 Clubs have achieved 100% of their AF Goal
 22 Clubs have achieved 75% of their AF Goal
 0 Clubs have achieved their AF Challenge Goal
 10 Clubs have achieved 100% of their Polio Goal
 11 Clubs are over \$150 AF Per Capita
 27 Clubs are over \$100 AF Per Capita
 0 Clubs have given \$5 Total to the AF (Zero Giving)
 0 Clubs have given \$5 Total to Polio (Zero Giving)
 0 Areas have achieved 100% of their AF Goal
 7 Areas have achieved 75% of their AF Goal
 0 Areas have achieved their total AF Challenge Goal
 1 Areas are over \$200 AF Per Capita
 8 Areas are over \$100 AF Per Capita

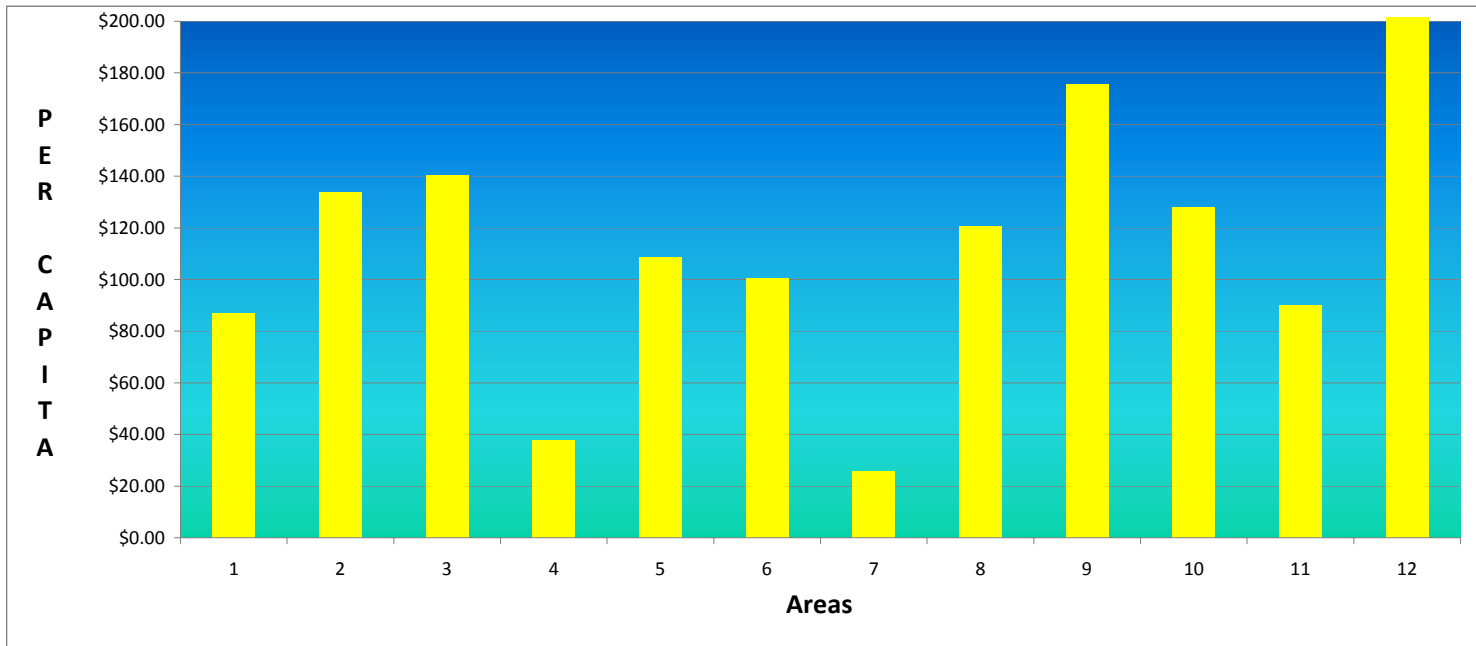


% of Club AF Goal Achieved - By Area



AF Per Capita - By Area

Goal is \$150



All Clubs Ranked by % of AF Goal Achieved

1	Clemson	227%
2	Pleasantburg	146%
3	Westminster	134%
4	Greater Anderson	132%
5	Greenville Breakfast	130%
6	Greenville Evening	127%
7	Newberry	122%
8	Seneca	122%
9	Twin City of Batesburg-Leesville	110%
10	Rock Hill	107%
11	Emerald City	106%
12	Simpsonville	105%
13	York	103%
14	Gaffney	101%
15	Mauldin	92%
16	Greater Greer	90%
17	Easley	87%
18	Spartan West	85%
19	Aiken	82%
20	Greenwood	80%
21	North Greenville	79%
22	Greenville	79%
23	The Foothills	73%
24	Union	72%
25	Laurens	70%
26	Fountain Inn	70%
27	Lake Wylie	69%
28	Indian Land	67%
29	Fort Mill	66%
30	Clemson-Calhoun	63%

All Clubs Ranked by % of Polio Goal Achieved

1	Gaffney	160%
2	Pleasantburg	155%
3	Batesburg-Leesville	147%
4	Emerald City	139%
5	Seneca	112%
6	Westminster	107%
7	Seneca Golden Corner	101%
8	Simpsonville	100%
9	Easley	100%
10	Laurens	95%
11	Aiken Sunrise	94%
12	Newberry	93%
13	Clemson-Calhoun	84%
14	Chester	81%
15	Mauldin	71%
16	Clover	62%
17	Spartan West	61%
18	North Augusta	59%
19	Greenville	52%
20	Lake Wylie	51%
21	Anderson	51%
22	York	42%
23	Aiken	40%
24	EClub of the Carolinas	39%
25	Pickens	37%
26	Twin City of Batesburg-Leesville	33%
27	Clemson	33%
28	Greater Greer	30%
29	Greenwood	28%
30	Union	25%

31	EClub of the Carolinas	63%
32	Inman	58%
33	Seneca Golden Corner	57%
34	Winnsboro	54%
35	Pickens	50%
36	Greenville East	49%
37	Golden Strip Sunrise	49%
38	North Spartanburg	47%
39	Aiken Sunrise	45%
40	Clover	41%
41	Clinton	38%
42	Fair Play	36%
43	Blacksburg	23%
44	Walhalla	22%
45	Chester	22%
46	Lancaster Breakfast	19%
47	North Augusta	16%
48	Anderson	11%
49	Abbeville	8%
50	Spartanburg	7%
51	Woodruff	2%
52	Lancaster	2%
53	Batesburg-Leesville	1%

31	Greenville Evening	25%
32	Greenville East	22%
33	Fountain Inn	20%
34	Woodruff	15%
35	Spartanburg	13%
36	Inman	11%
37	North Greenville	10%
38	Lancaster Breakfast	7%
39	Lancaster	5%
40	Clinton	3%
41	Fort Mill	3%
42	Greater Anderson	2%
43	Rock Hill	1%
44		0%
45		0%
46		0%
47		0%
48		0%
49		0%
50		0%
51		0%
52		0%
53		0%

All Clubs Ranked by AF Per Capita

1	Greenville Evening	\$558.24
2	Emerald City	\$460.65
3	York	\$232.66
4	Greenville Breakfast	\$223.36
5	Seneca	\$214.54
6	Newberry	\$186.12
7	Greater Greer	\$164.47
8	Pleasantburg	\$163.93
9	EClub of the Carolinas	\$160.10
10	Westminster	\$153.43
11	Easley	\$150.94
12	Spartan West	\$142.80
13	Greenville	\$139.25
14	Aiken	\$137.05
15	Twin City of Batesburg-Leesville	\$135.93
16	Fort Mill	\$133.32
17	Simpsonville	\$124.34
18	Clemson	\$124.18
19	Greater Anderson	\$123.83
20	Aiken Sunrise	\$120.12
21	Mauldin	\$119.52
22	Greenville East	\$113.10
23	Union	\$111.91
24	Lake Wylie	\$103.15
25	Laurens	\$103.06
26	Clover	\$101.88
27	Greenwood	\$100.18
28	North Greenville	\$96.67
29	Clemson-Calhoun	\$94.79
30	The Foothills	\$89.06
31	Seneca Golden Corner	\$89.00
32	Winnsboro	\$87.79
33	North Spartanburg	\$86.11

All Clubs Ranked by Polio Per Capita

1	Clover	\$103.75
2	Laurens	\$102.04
3	Pleasantburg	\$83.30
4	Batesburg-Leesville	\$62.86
5	Westminster	\$53.43
6	Aiken Sunrise	\$52.83
7	Clemson-Calhoun	\$52.29
8	Emerald City	\$50.48
9	Seneca	\$49.96
10	Simpsonville	\$42.55
11	EClub of the Carolinas	\$37.62
12	Mauldin	\$36.90
13	Spartan West	\$34.20
14	Seneca Golden Corner	\$32.40
15	Newberry	\$26.43
16	Chester	\$23.46
17	Greenville Evening	\$22.06
18	Aiken	\$21.53
19	Anderson	\$20.03
20	Pickens	\$19.79
21	York	\$19.69
22	North Augusta	\$19.67
23	Easley	\$18.87
24	Lake Wylie	\$17.75
25	Twin City of Batesburg-Leesville	\$16.47
26	Union	\$11.70
27	Greenville East	\$11.67
28	Greenwood	\$10.42
29	Greater Greer	\$10.00
30	Greenville	\$9.42
31	Spartanburg	\$6.04
32	Inman	\$5.57
33	North Greenville	\$5.31

34	Fountain Inn	\$85.14
35	Walhalla	\$84.47
36	Rock Hill	\$83.27
37	Inman	\$82.50
38	Indian Land	\$78.68
39	Pickens	\$74.42
40	Clinton	\$56.90
41	Gaffney	\$55.98
42	Blacksburg	\$53.00
43	Fair Play	\$33.33
44	Lancaster Breakfast	\$28.08
45	Golden Strip Sunrise	\$24.29
46	North Augusta	\$23.33
47	Anderson	\$16.67
48	Chester	\$13.46
49	Abbeville	\$11.36
50	Spartanburg	\$7.22
51	Batesburg-Leesville	\$1.63
52	Lancaster	\$1.49
53	Woodruff	\$1.00

34	Clemson	\$3.65
35	Gaffney	\$2.58
36	Lancaster Breakfast	\$1.49
37	Clinton	\$1.38
38	Fountain Inn	\$1.08
39	Lancaster	\$1.04
40	Woodruff	\$1.00
41	Fort Mill	\$0.68
42	Greater Anderson	\$0.67
43	Rock Hill	\$0.29
44		\$0.00
45		\$0.00
46		\$0.00
47		\$0.00
48		\$0.00
49		\$0.00
50		\$0.00
51		\$0.00
52		\$0.00
53		\$0.00

All Clubs Ranked by Total AF Giving

1	Greenville	\$38,295
2	Emerald City	\$25,336
3	Aiken	\$24,120
4	Greenville Evening	\$18,980
5	Newberry	\$13,028
6	Clemson	\$11,052
7	Greenwood	\$10,719
8	Fort Mill	\$9,865
9	Rock Hill	\$8,577
10	Seneca	\$8,153
11	Easley	\$8,000
12	York	\$7,445
13	Greater Anderson	\$7,430
14	Pleasantburg	\$6,721
15	Simpsonville	\$5,844
16	Westminster	\$5,370
17	Union	\$5,260
18	Laurens	\$5,050
19	Aiken Sunrise	\$4,925
20	EClub of the Carolinas	\$4,163
21	Greenville Breakfast	\$4,021
22	North Spartanburg	\$3,875
23	Spartan West	\$3,570
24	North Greenville	\$3,480
25	Gaffney	\$3,471
26	Mauldin	\$3,466
27	Pickens	\$3,200
28	Fountain Inn	\$3,150
29	Winnsboro	\$2,985
30	Walhalla	\$2,787
31	Indian Land	\$2,675
32	Greater Greer	\$2,467

All Clubs Ranked by Total Polio Giving

1	Laurens	\$5,000
2	Aiken	\$3,790
3	Pleasantburg	\$3,415
4	Emerald City	\$2,776
5	Greenville	\$2,590
6	Clover	\$2,490
7	Aiken Sunrise	\$2,166
8	Simpsonville	\$2,000
9	Seneca	\$1,899
10	Westminster	\$1,870
11	Newberry	\$1,850
12	Anderson	\$1,623
13	Clemson-Calhoun	\$1,255
14	Chester	\$1,220
15	Spartanburg	\$1,130
16	Greenwood	\$1,115
17	Mauldin	\$1,070
18	Easley	\$1,000
19	EClub of the Carolinas	\$978
20	Batesburg-Leesville	\$880
21	Spartan West	\$855
22	Pickens	\$851
23	Greenville Evening	\$750
24	Seneca Golden Corner	\$648
25	York	\$630
26	Union	\$550
27	Lake Wylie	\$355
28	Clemson	\$325
29	North Augusta	\$295
30	Twin City of Batesburg-Leesville	\$247
31	Greenville East	\$245
32	North Greenville	\$191

33	Clover	\$2,445
34	Greenville East	\$2,375
35	Clemson-Calhoun	\$2,275
36	Lake Wylie	\$2,063
37	Twin City of Batesburg-Leesville	\$2,039
38	Lancaster Breakfast	\$1,881
39	Seneca Golden Corner	\$1,780
40	Inman	\$1,650
41	Clinton	\$1,650
42	The Foothills	\$1,425
43	Anderson	\$1,350
44	Spartanburg	\$1,350
45	Chester	\$700
46	Blacksburg	\$530
47	Abbeville	\$500
48	Fair Play	\$400
49	North Augusta	\$350
50	Golden Strip Sunrise	\$340
51	Lancaster	\$100
52	Batesburg-Leesville	\$23
53	Woodruff	\$15

33	Gaffney	\$160
34	Greater Greer	\$150
35	Inman	\$111
36	Lancaster Breakfast	\$100
37	Lancaster	\$70
38	Fort Mill	\$50
39	Greater Anderson	\$40
40	Clinton	\$40
41	Fountain Inn	\$40
42	Rock Hill	\$30
43	Woodruff	\$15
44		\$0
45		\$0
46		\$0
47		\$0
48		\$0
49		\$0
50		\$0
51		\$0
52		\$0
53		\$0

All Areas Ranked by % of AF Goal Achieved

1	AG Cathy Golson	96.7%
2	AG Buddy Smith	84.6%
3	AG Candy Surkin	84.0%
4	AG Beth Padgett	83.9%
5	AG Crossie Cox	83.0%
6	AG Andrew Hodges	80.9%
7	AG Chad Bordeaux	77.2%
8	AG Gene Moorhead	73.3%
9	AG Dan Rickabaugh	68.1%
10	AG Steve Bahan	67.7%
11	AG Franca Meloncelli	31.1%
12	AG Rebecca Melton	23.3%

All Areas Ranked by AF Per Capita

1	AG Cathy Golson	\$211.63
2	AG Andrew Hodges	\$175.51
3	AG Beth Padgett	\$140.39
4	AG Steve Bahan	\$133.99
5	AG Buddy Smith	\$128.14
6	AG Dan Rickabaugh	\$120.52
7	AG Gene Moorhead	\$108.52
8	AG Chad Bordeaux	\$100.35
9	AG Candy Surkin	\$90.25
10	AG Crossie Cox	\$87.04
11	AG Franca Meloncelli	\$37.71
12	AG Rebecca Melton	\$25.76

All Areas Ranked by Total AF Giving

1	AG Beth Padgett	\$54,891
2	AG Andrew Hodges	\$40,718
3	AG Cathy Golson	\$34,072
4	AG Dan Rickabaugh	\$31,457
5	AG Buddy Smith	\$24,988
6	AG Chad Bordeaux	\$23,180
7	AG Crossie Cox	\$22,107
8	AG Steve Bahan	\$18,490
9	AG Gene Moorhead	\$13,891
10	AG Candy Surkin	\$12,815
11	AG Franca Meloncelli	\$10,445
12	AG Rebecca Melton	\$5,666