



# 7750

ROTARY INTERNATIONAL

**FEBRUARY**  
is Peace  
and Conflict  
Prevention/  
Resolution  
Month



District Governor

**TERRY WEAVER**

DG2015@Rotary7750.org

864 275-3796

18 Pristine Dr.

Greer, SC 29650



**HOW IS YOUR CLUB  
LEADER GPS WORKING?**



**FRIENDSHIP  
EXCHANGE: ONE WAY  
TO BUILD PEACE. See  
page 3 about how you  
can become part of a  
Friendship Exchange  
with the Philippines.**

## Give peace a chance. By doing what?

February is Peace and Conflict Prevention/Resolution Month on the Rotary calendar. “What”, you might ask, “can I as an individual Rotarian do to promote peace and prevent conflict in the world?” A lot of things, actually.

You see, this Rotary area of focus is to some extent the culmination of the other five. Root causes of conflict include disease, malnutrition, poverty and illiteracy, to name a few. Populations free of all those problems tend to be a lot more peaceful than places where there’s daily contention over food and water.

In our own country, there is a high correlation between poverty and domestic violence. Illiteracy is a root cause of poverty. Throw in hunger and you have a multi-ingredient recipe for violence.

So, when you’re at work on a community service project in your own club, you’re giving peace a chance, whether by eliminating illiteracy, fighting disease or promoting economic development. When you contribute to The Rotary Foundation, you’re addressing all six areas of focus which include the building blocks of peace. The chart above shows how the six areas of focus overlay on Maslow’s hierarchy of human needs. Remarkable, isn’t it?



## PEACE CONFERENCE IN GREENVILLE APRIL 13

More specific to the Peace theme, be sure and **Save the Date** for a **Peace and Conflict Resolution Seminar**, sponsored by the Greenville Club as part of its centennial celebration. This event is Wednesday, April 13 at the Younts Center at Furman University, and includes globally-recognized speakers on peace and conflict resolution. Registration will be open soon.

## DUKE-UNC PEACE CENTER

And, you’ll want to know more about Rotary’s **Duke-UNC Rotary Peace Center**. Each year the Center selects and trains Rotary Peace Fellows based on their ability to have a significant, positive impact on world peace and conflict resolution during their future careers.

# GIVE PEACE A CHANCE.

# HOW'S YOUR CLUB LEADER GPS WORKING?

BY DG TERRY WEAVER

We've just rounded the turn and there are five months left to make a difference in your club this year. You have only two months (until April 1) to get your club recognized by the Rotary International President. To get credit for your club's accomplishments, go to [www.rotary.org/myrotary](http://www.rotary.org/myrotary), log in, then mouse over "Manage" and click "Rotary Club Central". On the "Service" tab, look for "2015-16 Presidential Citation Goals" and use the "pencil" icon to open the EDIT mode.

This is a good time to consult the Presidential Citation Dashboard and see if you're on course. To get there, start at [www.rotary.org/myrotary](http://www.rotary.org/myrotary), log in, then mouse over "Manage" and click "Reports." Scroll all the way down to "Awards" — near the bottom of the list, where you'll see a link to "View Reports" in the Presidential Citation section.

On a car trip, your GPS would be comparing your destination to your location, and a nice lady inside the box would be directing the next turn. To check your club's progress against the intended destination, dust off your club plan, and check some numbers:

What are our membership goals? Where are we? Have we anticipated we may lose a couple of members (or more) in the coming months?

What are our goals for The Rotary Foundation Annual Fund and Polio Plus? Where are we? Check out the [D-7750 Monthly Membership & Foundation Summary \(Rainbow Report\)](#) for a one- page snapshot (includes membership).

Sustainability — Is our President Nominee (President for 2017-18) identified? Are both that person and the President-Elect on the Rotary Leadership Institute track to completion?

Service Projects — Have we taken a shot at all the projects we intended for this year?

*There's plenty of runway left, even if you haven't gotten your airspeed all the way up. Let's finish strong and leave the campground in better shape than when we found it.*



## Chamber president speaks in Spartanburg

Ted Pitts, CEO of SC Chamber of Commerce, spoke to the Spartanburg Rotary Club Jan. 19.

## ROTARY GLOBAL REWARDS

Rotary Global Rewards is a new member benefit program designed to make membership even more rewarding for Rotarians. This program includes discounts on products and services such as travel, car rentals, hotels, dining and entertainment. It's our way of giving back to those who give so much.

[See the discounts](#)

[Learn more about the program](#)

[Visit the Member Center](#)

Rotary Global Rewards: the good you do comes back to you.



## Rotary Friendship Exchange to District 3820 (Philippines); committee needed

BY WADE CLEVELAND, D7750  
Friendship Exchange Chair,  
Rotary Club of Pleasantburg

Craving palm-tree lined beaches, days of island-hopping through crystal-clear waters filled with coral reefs, Spanish-colonial churches amid modern high-rises AND the privilege of meeting the world's friendliest, ever-smiling people who live in this paradise? Visit the Philippines!

### BECOME FRIENDS WITH FILIPINO ROTARIANS

Our district agreed to participate in a Rotary Friendship Exchange with District 3820 in the Philippines. Many of you will remember the delightful Group Study Exchange team from that district that we hosted in 2013 and will recall the fine hospitality that district showed our team in return in 2015. Now we have the opportunity to repeat these experiences by exchanging groups of Rotarians.

A team of Filipino Rotarians plans to visit District 7750 this year from June 8 through 17 as part of a Rotary Friendship Exchange. Plans for a reciprocal visit from our district to theirs await our attention.



### WHAT IS ROTARY FRIENDSHIP EXCHANGE?

The Rotary Friendship Exchange Program provides a means through which Rotarians (and their spouses/family members) in one part of the



world can experience life in another country or culture. Its goal is to advance international understanding and goodwill through person-to-person connections across national boundaries.

Typically, a team of ten to twelve Rotarians, often couples, visit several communities in the host district for a set period of time. The number of persons on the team and the length of stay are flexible; the districts involved agree on those details before the

### JOIN THE DISTRICT FRIENDSHIP EXCHANGE COMMITTEE

We want to assemble a committee to plan the Filipinos' visit to District 7750. Among items to be decided are:

- ☐ Places to see in our district,
- ☐ Hosts and lodging,
- ☐ Activities
- ☐ Nearby cities to visit outside our district.

The committee also needs to plan a reciprocal visit. If anyone is willing to help organize this visit by the Filipinos, has any desire to visit the Philippines or has any other interest in Rotary Friendship Exchange, this is the committee for you.

exchange occurs. All exchanges are funded by the participants, and hosts are not expected to assume a significant financial burden. Rotarians in the host district usually provide visiting team members food and lodging in their homes, but for other expenses, visitors pay their own way. All are rewarded with warm hospitality and an international travel experience unlike any other.

For further information or to volunteer, please email Wade Cleveland at [wadecleveland@bellsouth.net](mailto:wadecleveland@bellsouth.net).

**STEP IT UP THIS YEAR****Celebrate Valentine's Day and raise money  
for YOUTH EXCHANGE****CHAMPAGNE, CHOCOLATE AND CHANTEUSE**

*Let yourself be transported back to a bygone era. Enjoy an elegant evening of wine, hors d'oeuvres, three-course dinner and live jazz. Experience the pleasure and fun of RYE Supper Club! (A benefit for Rotary Youth Exchange – District 7750)*

*Saturday, February 13 | 6:30 PM | Greenville*

*1002 South Main Street, Downtown Greenville  
(Parish Hall of St. Andrews Episcopal Church – decked out in its finest nightclub style)*

**Single Tickets:** \$100 each (includes champagne, hors d'oeuvres, dinner, beer/wine, a rose, chocolates and live entertainment)

**VIP Single Tickets:** \$125 each (secures stage front seating)

**VIP Table of 8:** \$1000 (secures stage front seating plus a very special gift bag)

Purchase Tickets Today: <http://www.ismyrotaryclub.org/Calendar/Event.cfm?EventID=77282213>

**Entertainment featuring  
Loretta Holloway**

South Carolina's Official "First Lady Of Song"

The name Loretta Holloway is synonymous with warm elegance and sophisticated charm. Critics around the world describe her as "mesmerizing and captivating." Bill Willard of Variety Magazine writes "Holloway is a spellbinder, a singing actress." Jerry Fink of the *Las Vegas Sun* calls her "a consummate performer." Michael Paskevich of the *Las Vegas Review Journal* dubbed Holloway the "quintessential cabaret chanteuse." The *Chicago Sun Times* voted her "Best Jazz Singer City in Chicago," and the *Dallas Morning News* reports, "Holloway is terrific...an intoxicating show."

Officially proclaimed in 2011 as "South Carolina's First Lady of Song," Holloway has been a familiar face in the showrooms of Las Vegas and Atlantic City, where she opened for headliners such as Bill Cosby, Jay Leno, Whoopi Goldberg, Don Rickles, Rich Little, Gary Shandling and Jerry Lewis.

**Rotary**  
YOUTH EXCHANGE 

**Why support Rotary Youth Exchange?****(BECAUSE, IN A NUTSHELL, RYE PROMOTES PEACE IN THE WORLD, A GOAL WE CAN ALL SUPPORT.)**

Rotary Youth Exchange is study-abroad opportunity for young people who spend anywhere from a few weeks to a full year as an international student hosted by local Rotary clubs. These local Rotary clubs throughout the world enable participating students to learn a new language, experience a different culture, attend school in a foreign country, live with new families, travel, promote world peace and, in the process, grow and mature personally. The program, which is operated completely by

Rotary volunteers who donate their time, treasure and talents, embodies Rotary's goal of achieving world understanding and peace through international humanitarian, educational, and cultural exchange programs.

Our Rotary district has decades of experience both hosting foreign students and sending Americans abroad as part of this program. Fully certified under the standards of Rotary International, the program also meets all legal requirements established by the US State

Department.

Accordingly, the District 7750 program proudly endeavors to fulfill the State Department's mission for "public diplomacy," which is "to support the achievement of U.S. foreign policy goals and objectives, advance national interests, and enhance national security by informing and influencing foreign publics and by expanding and strengthening the relationship between the people and Government of the United States and citizens of the rest of the world."





Clover High School student Chloe Moore, from left, with teacher Hannah Bryant and student Jessie Comer, both from York Comprehensive High School, sort clothing at the Tender Hearts thrift store in York. Photo by Jennifer Becknell.



#### VIDEO ABOUT PROJECT

Click to watch the video featuring D7750 Interact Chair Jimmy Roach. <http://www.heraldonline.com/news/local/education/article55932455.html>

**Interact**  
Rotary Sponsored Club



## Clover and York Interact clubs work together on service project

Working with the well-established Clover Interact Club, the recently relaunched York Interact Club completed its first major service project: sorting clothes and food donations for the Clover Area Assistance Center. Rotarian Shirley Harris (the York club's new Interact liaison) and Karen Van Vierssen and Bryan Dillon from the Lake Wylie Rotary Club played major roles in organizing this event. Read the article in the Rock Hill Herald: <http://www.heraldonline.com/news/local/education/article55947530.html#storylink=cpy>

**Rotary**  
ECLUB OF THE CAROLINAS



## Green Pattaya with Monttra Hotel and ISE School

Rotary eClub of the Carolinas member Neo LothongKum spearheaded a "Green Pattaya" project in conjunction with The Monttra Hotel Pattaya staff and the International School of Eastern Seaboard (ISE) students. Approximately 100 people came to pick up trash from the Kasetsin street. A truck with around 100 bags was collected and taken away by Pattaya City Hall, who also assisted with the cleaning.

Green Pattaya is a Rotary E Club of Carolinas Project and additional information can be seen at <https://www.facebook.com/GreenPattaya>



Rotary eClub member Neo LothongKum, kneeling with his daughter and Monttra Hotel Pattaya staff members.

The cleanup crew loads a garbage truck.





## Innovative Alzheimer's research depends on YOUR club

### *Mail CART checks today!*

2016 is shaping up to be a banner year for The Coins for Alzheimer's Research Fund (CART).

Fifty-one initial grant applications proposing cutting-edge Alzheimer's Research studies have been received from thirty-six different research institutions. Applications are currently under review by CART's esteemed Scientific Review Panel (see accompanying story).

The next step to check the CART bank account and determine how many grants the donations received in 2015-2016 will support.

If your club has CART funds that you would like to put in action in a 2016 grant, please send a check as soon as possible to:

District 7750 CART Fund  
c/o Steve Black  
P.O. Box 1564  
Aiken, SC 29802



PDG Jim Puryear, member of the Rotary Club of Greenville with 2015 CART grant recipients Erik Musiek, Wenjie Luo and Tony Kim.

## Puryear heads up CART grants

**BY BARBARA IVEY, D7750 CART CHAIR  
ROTARY CLUB OF FORT MILL**

When Jim Puryear joined the Greenville Rotary Club in August 2015 after moving from Augusta, District 7750 welcomed a long-time friend and volunteer with The Coins for Alzheimer's Research Fund (CART).

In addition to being a Past District Governor of D6920, Jim has served as vice president of CART Research Grants for more than eight and a half years. In this role, Jim coordinates the annual review of grant applications and selection of grant recipients by CART's Scientific Review Panel. This year, fifty-one initial grant applications proposing cutting-edge Alzheimer's Research studies have been received from thirty-six different research institutions.

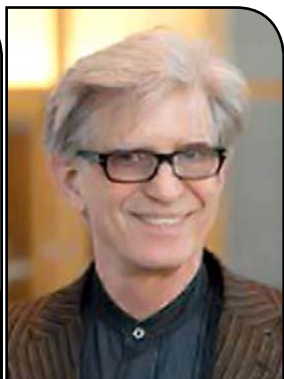
Jim's team is responsible for the careful, detailed review of these highly technical applications. His panel is a who's who of Alzheimer's Research notables, including Alan Levey of Emory University, John Trojanowski of the University of Pennsylvania and Karl Herrup of the Hong Kong University of Science and Technology.

The next few months brings great deal of focused effort by this panel they select projects that have the potential to substantially advance biomedical research on Alzheimer's Disease.

2016 CART grants will be awarded at the Annual Meeting of The CART Fund in Columbia, SC on May 2..



Alan Levey



John Trojanowski



Karl Herrup



### MAIN STREET JUNCTION

Union Rotarian and Mayor Harold Thompson introduced Matt Montgomery to the club. Matt is the president of The Montgomery Company that won the bid for the City of Union 'Main Street Junction' Project. They are in the process now of renovating a building on Main Street into an event venue with a park located behind it. Montgomery said it will be modeled after Indigo Hall in Spartanburg with contemporary Southern charm. Many historic pictures of Union will be on display in the venue and other historic artifacts.



### MEALS ON WHEELS AND CANCER

Rotarian John Fallaw welcomed Lou Stackhouse to the club. Lou is a volunteer for Meals on Wheels and the Union Cancer Service. The Union Cancer Service is a non-profit agency that receives majority of funding from United Way of the Piedmont and private donations. The Union Cancer Service provides needed items to cancer patients, including: liquid nutrition, walkers, wheelchairs, incontinent supplies, and other items at no cost to patients.



### ARTS IN UNION

Rotarian Bill Graham introduced Amber Ivey and Bennie Giles to the club. Amber, Director of the Union County Arts Council-UCAC, spoke to the club about all of the many classes that are coming up at the Arts Council. Bennie updated the club on the remodeling of the Arts Council building and spoke about more projects that need to be done.

**FRIDAY, FEBRUARY 19 | 7:00 P.M.**

**BON SECOURS ARENA, GREENVILLE**

## ROTARY INTERACTORS FUNDRAISER for **POLIO**

**Our District Interact Clubs are partnering with Polio Plus to offer an exciting event for Interactors, Rotaractors, Rotarians, friends, and family at a Rotary hockey event between the Columbia Stingrays and Greenville Swamp Rabbits. All the details are available on this link:**

**"End Polio Now" Fundraiser at a Greenville Swamp Rabbits Hockey Game**





Greenville Club president Don Koonce, left, presented the Paul Harris Fellows to Fred and Cathy Baus. Also pictured is Russ Miller, co-chair of the Rotary Foundation for the Rotary Club of Greenville.



## Author of children's book about Greenville fundraiser receives PHF

The Rotary Club of Greenville recognized Fred and Cathy Baus for significant contributions to its club with Paul Harris Fellows. Fred wrote a children's book titled *Oh! Those Holiday Lights*, which is a fictional story about how Roper Mountain Holiday Lights came to be. The heart of the story is about the spirit of caring and sharing of the Greenville Community and the Rotary Club of Greenville. The book which is an 88-line poem features Roper, an ogre, who is lonely

and sad.

Roper does not know how to behave, and he steals the holiday lights. The children of Greenville decide to reach out to Roper and share their holiday gifts with him, which is the true meaning of holiday celebrations. Roper returns the lights, and the story ends with the reader being told "...we still warm our hearts on cold dark winter nights when we tour Roper Mountain and see Roper's lights."

Cathy Baus appeared as Roper,

the ogre, at Roper Mountain Holiday Lights on weekends, and she visited classrooms at child development centers in the Rotary Read to Me program where children were presented with copies of *Oh! Those Holiday Lights*. Hundreds of pictures were made with children and adults hugging Cathy dressed as Roper. Cathy had over 60 hours in the Roper costume by the end of the holiday season!

## UPCOMING D-7750 Events

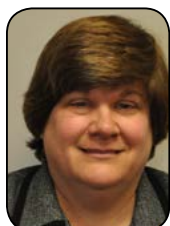
Feb. 13, 2016	Greenville	Rotary Youth Exchange Supper Club Benefit
Feb. 15-20, 2016	Haiti	Trip to visit projects in Haiti
Feb. 19, 2016	Greenville	PolioPlus Fundraiser at Swamp Rabbits Hockey Game
Feb. 20-27, 2016	Honduras	Honduras Water Project Dedication Trip
March 12, 2016	Greenwood	Rotary Leadership Institute (RLI)
March 17-19, 2016	Greensboro, NC	Presidents-Elect Training Seminar (PETS), required for PEs & AGs
April 13, 2016	Furman University	Peace Conference sponsored by Greenville club
April 22-24, 2016	Greenville	All Club Conference for District 7750 Rotarians
May 29 - June 1, 2016	Seoul	International Convention in Seoul, Korea
June 23, 2016	Greenville	Awards & Installation Banquet





## 2015-16 District 7750 Rotary Foundation Giving through 1/24/2016

Annual Fund Goal	\$ 405,771
	53 of 53 – 100%
Annual Fund Total	\$ 222,483
	(54.83% goal)
Annual Fund Per Capita	\$ 84.59
	(2630 members)
Endowment Fund	\$ 31,917
PolioPlus Goal	\$ 99,630
	(53 of 53 – 100%)
PolioPlus	\$ 29,756
	(29.86% goal)
Total Giving	\$ 284,157
\$0 AF Clubs	2
	(51 of 53 – 96.23%)
\$0 Polio Clubs	16
	(37 of 53 – 69.81%)
DDF Transfer – Polio	\$ 30,111
Major Gifts	2
Major Donors	5 – Level 1
	2 – Level 2
	1 – Level 3
Paul Harris Fellows	161
Paul Harris Society 10+1	60
Bequest Society	5
Benefactors	43
Rotary Direct	78
EREY	1,329 (50.53%)
Sustaining Members	593 (22.55%)



**DISTRICT FOUNDATION CHAIR**  
Lorraine Angelino  
118 Leyland Court, Greenwood, SC  
29649  
864.554.0598  
dg2013@rotary7750.org

## Polio's end of the year story: more funding approved by RI and US

### ROTARY GIVES \$35 MILLION BOOST TO POLIO ERADICATION

Rotary is releasing \$35 million in grants to support polio immunization activities and research in nine countries, including Afghanistan and Pakistan. The funds will build on last year's historic achievement of stopping the transmission of the wild poliovirus in Nigeria and all of Africa. In 2015 there were only 70 wild polio cases reported as compared to 350 reported cases in 2014.

The funds include \$11.4 million in Pakistan and \$6 million in Afghanistan, the two remaining polio-endemic countries. Funding will also support immunization activities in several countries still at-risk, including Nigeria (\$5.5 million), Ethiopia (\$4.1 million), Chad (\$2 million), Somalia (\$1.8 million), Cameroon (\$1.6 million), Iraq (\$1.6 million), and India (\$618,000). An additional \$355,000 will be allocated to polio research. *Rotary News* 13-Jan-2016

### US GOVERNMENT APPROVES \$228 MILLION IN FUNDS FOR POLIO ERADICATION

The US Congress approved a total of \$228 million for the

2016 federal budget to support global polio eradication efforts in continuation of the country's longstanding leadership in the fight to end polio. The funding represents a \$10 million increase over the level of funding provided in fiscal year 2015. Read More at: [http://www.endpolio.org/stories/posts/us-government-approves-\\$228-million-in-funds-for-polio-eradication/#more](http://www.endpolio.org/stories/posts/us-government-approves-$228-million-in-funds-for-polio-eradication/#more)

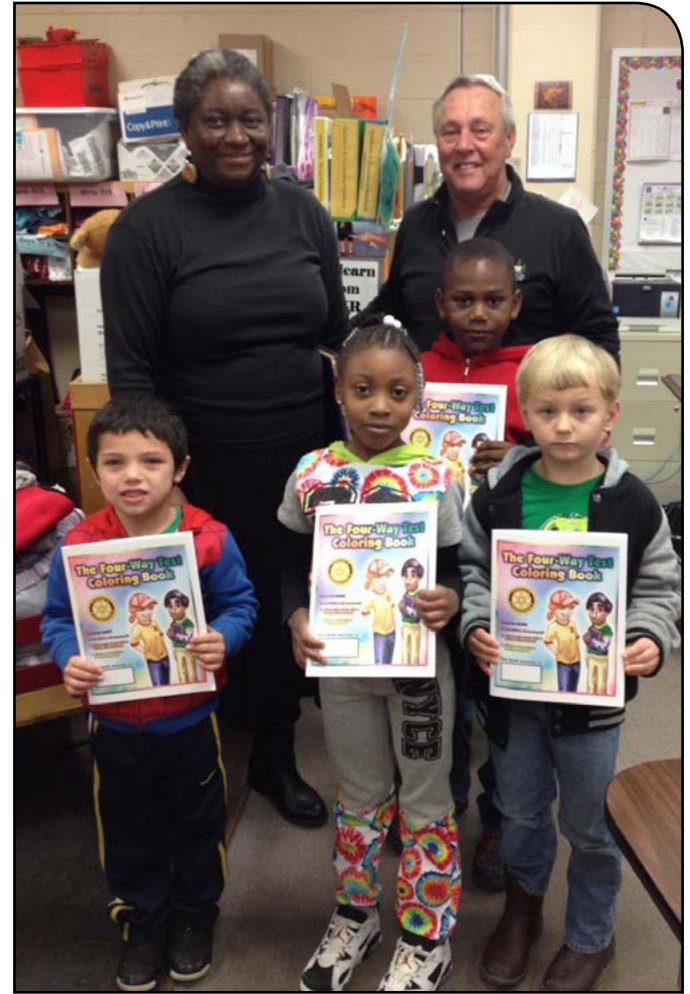
### THE REST OF THE STORY FOR 2016

"We are closer than ever to achieving a polio-free world," says Michael K. McGovern, chair of Rotary's International PolioPlus Committee. "To ensure that no child ever again suffers the devastating effects of this disease, we must all ensure that the necessary funds and political will are firmly in place in 2016."

Zone 33 polio coordinator Rocky Jacobs says "As the chorus for a change of priorities grows for Rotary's #1 humanitarian priority, we must remember that we made a commitment a little over three decades ago, and we are within a couple of years of completing that commitment, and we MUST!"

### 2015-16 Grant Preparation Schedule for District 7750 Clubs

- March 31, 2016 – Deadline for completion of District Grants and filing of final reports for the current Rotary year (2015-16)
- April 30, 2016 – Deadline for submitting 2016-17 District Grant Applications



## Twin City presents 4-Way Test coloring books to second graders at two schools

Twin City Rotary Club of Batesburg-Leesville provided second graders at Batesburg-Leesville Primary and Ridge Spring-Monetta Elementary Schools The 4 Way Test Coloring Books. The coloring books will be used through the guidance classes of both schools. Pictured at right is Darlene Simpkins, Guidance Counselor at Batesburg Primary, with Rotarian Steve Enlow. In the photo above is Amy Cooper, Assistant Principal at Ridge Spring-Monetta Elementary with Rotarian Stephanie Widmann.

## Polio update: Our donations are slightly ahead of last year

BY AMELIA NELSON, D7750 POLIO CHAIR  
ROTARY CLUB OF GREATER ANDERSON

ZONE 33: ROCKY JACOBS, End Polio Now Zone 33 Coordinator, reports that the districts in Zone 33 are slightly ahead of where we were one year ago at this time. Total monies contributed by the clubs and districts in Zone 33 and the DDF transferred by the districts, during the first six months of last Rotary year through December 31, 2014, totaled \$825,754. Through December 31, 2015, the first six months of this Rotary year, the total was \$850,525, a gain of \$24,771.

DISTRICT 7750: Zone 33 directed that every Rotary club in our Rotary district have a polio goal just as they have an annual fund and endowment fund goal. The district was also asked that when the total contributions for all clubs in the district, large, medium and small, are totaled and

averaged by a district that the average be at least \$1,000 per club for the district during the Rotary year. Those individual clubs that contribute at least \$1,500 per club to PolioPlus will receive special recognition from TRF.

AND CONGRATULATIONS to DG Terry and Pam who recently were on a National Immunization Day (NID) trip to Delhi, India. Terry wrote about their trip in the December newsletter. We do not think much about the danger involved in these NID trips, but please read the news story below.

POLIO SECURITY PERSONNEL KILLED IN PAKISTAN - A bomb attack in Quetta, Pakistan took the lives of 15 security personnel outside a polio immunization center. Those killed were protecting vaccinators

who were preparing to conduct polio immunization campaigns as part of National Immunization Day campaigns. Read more at: <https://www.rotary.org/myrotary/en/my-rotary/rotary-condemns-deadly-attackpolio-security-personnel-pakistan>.

Also, a January National Geographic story previewed the opportunities and challenges ahead for polio eradication in 2016. The piece exclusively quoted PolioPlus Director Carol Pandak.

*Our district's Polio goal is \$99,630. At the end of December we have \$24,047 – not even a third of our Polio goal accomplished! Let's do our part in eradicating polio by reaching our goal.*



## REGISTRATION IS NOW OPEN FOR THE ALL CLUB CONFERENCE

ALL CLUB CONFERENCE  
FOR DISTRICT 7750  
APRIL 22-24, 2016  
GREENVILLE HYATT

Starts with a kick-off party at 6 p.m.  
on Friday. Concludes around noon on  
Sunday. The entire **agenda** is on the  
website.

**REGISTER NOW!**

*Many more conference details  
and information can be found at  
[www.rotary7750.org/conference](http://www.rotary7750.org/conference)*



### BIKE RIDE in Atlanta 2017

Calling all Motorcyclists: Mark your 2017 calendar. Following the Rotary International Convention in Atlanta, the International Fellowship of Motorcycling Rotarians (IFMR) will RIDE from June 15 til we get done. Contact [jim@dodmead.net](mailto:jim@dodmead.net) for additional information.



### Mid-Year Assembly

AG Buddy Smith from Union leads a discussion among club members from his area at the Mid-Year Assembly Jan. 30 in Greenwood. About 185 people were present.

## 7750 Membership & Attendance for December

Club	Members 7/1/2015	Current Members	Change	Meetings Held	Attend. %
Abbeville	44	45	1	3	52.00
Aiken	176	179	3	2	75.52
Aiken Sunrise	41	41	0	3	92.73
Anderson	81	81 (Nov)	0	0	0.00
Batesburg-Leesville	14	14	0	4	71.43
Blacksburg	10	10	0	5	52.50
Chester	52	52	0	3	51.30
Clemson	89	91	2	2	65.29
Clemson-Calhoun	24	26	2	2	80.85
Clinton	29	29	0	3	62.03
Clover	24	23	-1	3	75.00
E-Club of the Carolinas	26	30	4	4	59.26
Easley	53	52	-1	5	80.00
Emerald City	55	55	0	4	75.91
Fair Play	12	14	2	3	95.20
Fort Mill	74	79	5	3	38.82
Fountain Inn	37	34	-3	2	82.09
Gaffney	62	63	1	2	74.74
Golden Strip Sunrise	14	14	0	3	80.95
Greater Anderson	60	64	4	3	66.48
Greater Greer	15	16	1	3	93.00
Greenville	275	264	-11	2	53.71
Greenville Breakfast	18	19	1	3	54.40
Greenville East	21	25	4	3	61.11
Greenville Evening	34	39	5	1	69.00
Greenwood	107	116	9	2	65.79
Indian Land	34	28	-6	6	65.87
Inman	20	20	0	3	80.00
Lake Wylie	20	24	4	3	82.35
Lancaster	67	64	-3	3	65.00
Lancaster Breakfast	67	57	-10	3	65.34
Laurens	49	49	0	3	77.94
Mauldin	29	29	0	5	87.90
Newberry	70	72	2	2	79.00
North Augusta	15	17	2	3	63.83
North Greenville	36	36	0	3	85.42
North Spartanburg	45	47	2	2	97.56
Pickens	43	45	2	4	78.44
Pleasantburg	41	41	0	3	80.53
Rock Hill	103	102	-1	1	61.00
Seneca	38	42	4	3	73.33
Seneca Golden Corner	20	18	-2	3	64.71
Simpsonville	47	47	0	4	96.67
Spartan West	25	24	-1	2	80.00
Spartanburg	187	190 (Nov)	3	0	0.00
The Foothills	16	17	1	2	58.82
Twin City	15	17	2	3	59.18
Union	47	50	3	3	56.46
Walhalla	33	34	1	2	70.37
Westminster	35	38	3	4	79.00
Winnsboro	34	31	-3	2	69.00
Woodruff	15	16 (Nov)	1	0	0.00
York	32	34	2	3	77.40
Totals	2630	2664	34	2.96	71.68
50 of 54 clubs reporting					

# Rotary



This is the correct Rotary logo. It, and other approved versions, can be found easily at **BRAND CENTER**, <https://brandcenter.rotary.org>. You can see it used throughout this newsletter with club names. If your club is still using the old blue and gold logo, please update your materials to the current Rotary branding guidelines.

## Rotary Leadership Institute

Zone 33 Divison

### Spring 2016 Calendar

(events closest to us)

Saturday, Feb. 20, 2016 Charleston, SC  
 Saturday, Mar. 12, 2016 Greenwood, SC  
 Saturday, Apr. 2, 2016 Mooresville, NC

**CLICK TO REGISTER FOR ANY OF THESE EVENTS.**

## MARCH NEWSLETTER

# Deadline

## Feb. 25

Send your items to newsletter editor

**PDG Sue Poss**

**[pdgsueposs@gmail.com](mailto:pdgsueposs@gmail.com)**





# Membership Champions (new members and their sponsors in November)

New Member	Club	Sponsor	Classification
Caudill, Andrew W. (ANDY)	Lancaster Breakfast		Manufacturing Management
Cockfield, Nathan (NATHAN)	North Augusta		
Gray, Sarah L (SARAH)	Clemson		
House, Melissa M. (MISSY)	Spartanburg	John F. Perry	Government - Representative Office
Hurst, William T (BILL)	Clemson-Calhoun		Education, University Plant Management
LaClair, Derek (DEREK)	The Foothills	Toni Coggins	Boy Scouts
Martin, John (JOHN)	Seneca Golden Corner	Lorraine Harding	Museum Curator
McSwain, Crystal P (CRYSTAL)	Inman	Marsha B. Clark	
Passetti, Bob (BOB)	Greater Anderson	Tammie Willmore Collins	
Simpson, Donna D. (DONNA)	Fountain Inn	John R. Hastings Sr.	
Sullivan, Ann Marie (ANN)	Seneca	Deborah B. DuBose	Attorney
Timmons, William Richardson IV (WILLIAM)	Greenville	Donna Rains Gottschall, William Banks Long Jr	Entrepreneur
Williams, Daphne D (DAPHNE)	Greater Greer	Earl D. Simmons Sr.	Copy Writer

## FOUNDATION AND MEMBERSHIP PAGES AHEAD: Check the trends

Following this page are several pages of information on Foundation giving and membership trends.



**Rotary**  
SENECA GOLDEN CORNER



### HARDING RECOGNIZED WITH MEMBERSHIP AWARD

Lorraine Harding with the Golden Corner Rotary Club received RI's bronze pin for her membership recruitment efforts. Pictured from left are Golden Corner Rotary Club president Eddie Perry, John Martin, curator and executive director of the Lunney Museum of Seneca and the newest member of the Golden Corner Rotary Club, Harding and Steve Bahan, assistant governor of Rotary District 7750.

## Rotary Has Heart projects this quarter

### (Let DG Terry know about your project)

If you're doing a project during the first quarter, please tag it as a Rotary Has Heart project. You do not have to organize a specific project in order to get zone credit for participating in Rotary Has Heart. Let DG Terry know what your project was and what publicity you received. Each Governor in Zone 33 will select what he or she considers to be the best Rotary Has Heart community service project with related publicity in his or her district for Zone recognition.



**Rotary District 7750**  
**Membership Gain & Rotary Foundation**  
**Monthly Progress Report**

A r e a	Club	Current Members 1/26/2015	Member Gain 1/26/2015	AF Actual 2014-15	AF Goal 2015-16	% of AF Goal Achieved 2015-16	AF Per Capita 2015-16	AF MONTH	AF YTD 2015-16	Polio Total 2014-2015	Polio YTD 2015-16	Polio Per Capita 2015-16	Polio Goal 2015-16	Polio % of Goal
1	Anderson	78	-3	9,127	\$12,500	10.6%	\$16	\$10	\$1,320	\$1,839	\$1,608	\$20	\$3,200	50.2%
1	Clemson	91	2	6,470	\$4,875	149.1%	\$82	\$490	\$7,268	\$1,400	\$295	\$3	\$1,000	29.5%
1	Clemson-Calhoun	26	2	2,988	\$3,600	41.8%	\$63	\$405	\$1,505	\$1,840	\$1,180	\$49	\$1,500	78.7%
1	Greater Anderson	64	4	6,003	\$5,650	107.1%	\$101	\$85	\$6,050	\$3,000	\$40	\$1	\$2,000	2.0%
	AG Crossie Cox	A-1 Totals	5	24,588	\$26,625	60.6%	\$64	\$990	\$16,143	\$8,079	\$3,123	\$12	\$7,700	40.6%
2	Fair Play	14	2	1,170	\$1,100	18.2%	\$17	\$0	\$200	\$10	\$0	\$0	\$100	0.0%
2	Seneca	40	2	5,236	\$6,700	90.9%	\$160	\$85	\$6,092	\$1,840	\$835	\$22	\$1,700	49.1%
2	Seneca Golden Corner	19	-1	2,350	\$3,120	44.1%	\$69	\$85	\$1,375	\$247	\$352	\$18	\$640	55.0%
2	Walhalla	33	0	975	\$12,400	22.5%	\$84	\$0	\$2,787	\$120	\$0	\$0	\$25	0.0%
2	Westminster	38	3	5,037	\$4,000	86.0%	\$98	\$0	\$3,440	\$1,150	\$1,135	\$32	\$1,750	64.9%
	AG Steve Bahan	A-2 Totals	6	14,767	\$27,320	50.9%	\$101	\$170	\$13,894	\$3,367	\$2,322	\$17	\$4,215	55.1%
3	Greenville	266	-9	57,912	\$48,450	69.4%	\$122	\$2,348	\$33,612	\$5,300	\$2,590	\$9	\$5,000	51.8%
3	Greenville Breakfast	19	1	4,917	\$3,100	59.2%	\$102	\$917	\$1,834	\$10	\$0	\$0	\$900	0.0%
3	Greenville East	23	2	3,837	\$4,850	42.8%	\$99	\$100	\$2,075	\$1,150	\$245	\$12	\$1,100	22.3%
3	North Greenville	36	0	3,560	\$4,400	75.7%	\$93	\$85	\$3,330	\$1,010	\$96	\$3	\$1,850	5.2%
3	Pleasantburg	41	0	6,889	\$4,600	124.1%	\$139	\$169	\$5,709	\$3,202	\$1,629	\$40	\$2,200	74.0%
	AG Beth Padgett	A-3 Totals	-6	77,115	\$65,400	71.2%	\$119	\$3,619	\$46,560	\$10,672	\$4,560	\$12	\$11,050	41.3%
4	Inman	20	0	2,100	\$2,850	57.9%	\$83	\$1,600	\$1,650	\$10	\$111	\$6	\$1,000	11.1%
4	North Spartanburg	47	2	3,545	\$8,250	12.1%	\$22	\$0	\$1,000	\$1,309	\$0	\$0	\$2,750	0.0%
4	Spartan West	24	-1	3,953	\$4,200	77.3%	\$130	\$95	\$3,245	\$792	\$855	\$34	\$1,400	61.1%
4	Spartanburg	192	5	5,180	\$18,250	7.2%	\$7	\$10	\$1,320	\$10,263	\$1,130	\$6	\$9,000	12.6%
	AG Franca Meloncelli	A-4 Totals	6	14,778	\$33,550	21.5%	\$26	\$1,705	\$7,215	\$12,374	\$2,096	\$8	\$14,150	14.8%
5	Blacksburg	10	0	10	\$2,300	23.0%	\$53	\$0	\$530	\$10	\$0	\$0	\$50	0.0%
5	Clover	22	-2	3,772	\$6,000	24.9%	\$62	\$0	\$1,495	\$3,081	\$1,540	\$64	\$4,000	38.5%
5	Gaffney	64	2	3,733	\$3,450	25.1%	\$14	\$313	\$867	\$100	\$160	\$3	\$100	160.0%
5	York	35	3	7,129	\$7,200	68.8%	\$155	\$0	\$4,956	\$1,174	\$630	\$20	\$1,500	42.0%
	AG Gene Moorhead	A-5 Totals	3	14,644	\$18,950	41.4%	\$61	\$313	\$7,848	\$4,365	\$2,330	\$18	\$5,650	41.2%
6	Fort Mill	85	11	20,576	\$18,000	50.3%	\$122	\$185	\$9,060	\$1,852	\$0	\$0	\$2,000	0.0%
6	Indian Land	28	-6	1,515	\$4,001	31.6%	\$37	\$45	\$1,265	\$285	\$0	\$0	\$300	0.0%
6	Lake Wylie	24	4	2,712	\$3,000	19.4%	\$29	\$0	\$583	\$542	\$125	\$6	\$700	17.9%
6	Rock Hill	103	0	5,624	\$8,020	106.9%	\$83	\$0	\$8,577	\$1,711	\$30	\$0	\$2,550	1.2%
	AG Chad Bordeaux	A-6 Totals	9	30,427	\$33,021	59.0%	\$84	\$230	\$19,485	\$4,390	\$155	\$1	\$5,550	2.8%



A r e a	Club	Current Members 1/26/2015	Member Gain 1/26/2015	AF Actual 2014-15	AF Goal 2015-16	% of AF Goal Achieved 2015-16	AF Per Capita 2015-16	AF MONTH	AF YTD 2015-16	Polio Total 2014-2015	Polio YTD 2015-16	Polio Per Capita 2015-16	Polio Goal 2015-16	Polio % of Goal
7	Chester	52	0	3,800	\$3,250	21.5%	\$13	\$700	\$700	\$150	\$1,220	\$23	\$1,500	81.3%
7	Lancaster	65	-2	1,738	\$5,704	1.8%	\$1	\$0	\$100	\$510	\$70	\$1	\$1,500	4.7%
7	Lancaster Breakfast	59	-8	2,665	\$9,850	15.8%	\$23	\$335	\$1,553	\$10	\$100	\$1	\$1,500	6.7%
7	Winnsboro	31	-3	1,545	\$5,550	53.4%	\$87	\$10	\$2,965	\$250	\$0	\$0	\$1,500	0.0%
	AG Rebecca Melton	A-7 Totals	-13	9,748	\$24,354	21.8%	\$24	\$1,045	\$5,318	\$920	\$1,390	\$6	\$6,000	23.2%
8	Aiken	182	6	21,039	\$29,500	65.1%	\$109	\$350	\$19,213	\$3,853	\$3,790	\$22	\$9,500	39.9%
8	Aiken Sunrise	41	0	5,490	\$10,839	28.4%	\$75	\$0	\$3,075	\$2,946	\$1,950	\$48	\$2,300	84.8%
8	Batesburg-Leesville	13	-1	2,010	\$1,800	1.3%	\$2	\$0	\$23	\$1,382	\$880	\$63	\$600	146.7%
8	North Augusta	17	2	2,308	\$2,200	15.9%	\$23	\$0	\$350	\$760	\$295	\$20	\$500	59.0%
8	Twin City of Batesburg-Leesville	18	3	2,935	\$1,862	95.8%	\$119	\$85	\$1,784	\$500	\$247	\$16	\$750	32.9%
	AG Dan Rickabaugh	A-8 Totals	10	33,782	\$46,201	52.9%	\$94	\$435	\$24,445	\$9,441	\$7,162	\$27	\$13,650	52.5%
9	Abbeville	44	0	4,018	\$6,450	7.8%	\$11	\$0	\$500	\$10	\$0	\$0	\$1,075	0.0%
9	EClub of the Carolinas	30	4	4,879	\$6,600	39.6%	\$100	\$200	\$2,613	\$2,380	\$778	\$30	\$2,500	31.1%
9	Emerald City	55	0	12,346	\$23,800	93.3%	\$404	\$2,335	\$22,205	\$1,250	\$1,318	\$24	\$2,000	65.9%
9	Greenwood	117	10	9,740	\$13,450	44.8%	\$56	\$235	\$6,030	\$1,350	\$106	\$1	\$3,960	2.7%
	AG Andrew Hodges	A-9 Totals	14	30,982	\$50,300	62.3%	\$135	\$2,770	\$31,348	\$4,990	\$2,202	\$9	\$9,535	23.1%
10	Clinton	29	0	6,054	\$4,350	37.9%	\$57	\$0	\$1,650	\$1,200	\$40	\$1	\$1,200	3.3%
10	Laurens	49	0	6,605	\$7,200	36.1%	\$53	\$0	\$2,600	\$2,100	\$0	\$0	\$5,280	0.0%
10	Newberry	69	-1	14,299	\$10,650	103.4%	\$157	\$1,050	\$11,008	\$1,350	\$1,250	\$18	\$2,000	62.5%
10	Union	45	-2	7,288	\$7,350	32.7%	\$51	\$0	\$2,400	\$1,350	\$550	\$12	\$2,200	25.0%
	AG Buddy Smith	A-10 Totals	-3	34,245	\$29,550	59.8%	\$91	\$1,050	\$17,658	\$6,000	\$1,840	\$9	\$10,680	17.2%
11	Fountain Inn	34	-3	1,010	\$4,500	70.0%	\$85	\$0	\$3,150	\$10	\$40	\$1	\$200	20.0%
11	Golden Strip Sunrise	14	0	470	\$700	35.0%	\$18	\$35	\$245	\$10	\$0	\$0	\$350	0.0%
11	Mauldin	29	0	5,028	\$3,750	80.2%	\$104	\$0	\$3,006	\$700	\$900	\$31	\$1,500	60.0%
11	Simpsonville	48	1	6,348	\$5,550	44.6%	\$53	\$50	\$2,473	\$2,000	\$0	\$0	\$2,000	0.0%
11	Woodruff	15	0	563	\$750	0.0%	\$0	\$0	\$0	\$10	\$0	\$0	\$100	0.0%
	AG Candy Surkin	A-11 Totals	-2	13,418	\$15,250	58.2%	\$62	\$85	\$8,874	\$2,730	\$940	\$7	\$4,150	22.7%
12	Easley	54	1	8,010	\$9,150	10.9%	\$19	\$0	\$1,000	\$10	\$0	\$0	\$1,000	0.0%
12	Greater Greer	16	1	4,497	\$2,750	74.6%	\$137	\$417	\$2,050	\$1,117	\$150	\$10	\$500	30.0%
12	Greenville Evening	39	5	12,170	\$15,000	114.1%	\$504	\$255	\$17,120	\$2,700	\$650	\$19	\$3,000	21.7%
12	Pickens	45	2	6,542	\$6,400	32.8%	\$49	\$0	\$2,100	\$2,452	\$586	\$14	\$2,300	25.5%
12	The Foothills	17	1	932	\$1,950	73.1%	\$89	\$0	\$1,425	\$10	\$0	\$0	\$500	0.0%
	AG Cathy Golson	A-12 Totals	10	32,151	\$35,250	67.2%	\$147	\$672	\$23,695	\$6,289	\$1,386	\$9	\$7,300	19.0%
	District 7750							\$0	\$0	\$0	\$250			
	Totals		39	330,643	\$405,771	54.8%	\$84.59	\$13,083	\$222,483	\$73,617	\$29,756	\$11	\$99,630	29.9%

### Area Summary

		Member Gain 1/26/2015	AF Actual 2014-15	AF Goal 2015-16	% of AF Goal Achieved 2015-16	AF Per Capita 2015-16	AF MONTH	AF YTD 2015-16	Polio Total 2014-2015	Polio YTD 2015-16	Polio Per Capita 2015-16	Polio Goal 2015-16	Polio % of Goal
AG Crossie Cox	Area 1	5	24,588	26,625	60.6%	\$63.56	\$990	\$16,143	\$8,079	\$3,123	\$12	\$7,700	40.6%
AG Steve Bahan	Area 2	6	14,767	27,320	50.9%	\$100.68	\$170	\$13,894	\$3,367	\$2,322	\$17	\$4,215	55.1%
AG Beth Padgett	Area 3	-6	77,115	65,400	71.2%	\$119.08	\$3,619	\$46,560	\$10,672	\$4,560	\$12	\$11,050	41.3%
AG Franca Meloncelli	Area 4	6	14,778	33,550	21.5%	\$26.05	\$1,705	\$7,215	\$12,374	\$2,096	\$8	\$14,150	14.8%
AG Gene Moorhead	Area 5	3	14,644	18,950	41.4%	\$61.31	\$313	\$7,848	\$4,365	\$2,330	\$18	\$5,650	41.2%
AG Chad Bordeaux	Area 6	9	30,427	33,021	59.0%	\$84.35	\$230	\$19,485	\$4,390	\$155	\$1	\$5,550	2.8%
AG Rebecca Melton	Area 7	-13	9,748	24,354	21.8%	\$24.17	\$1,045	\$5,318	\$920	\$1,390	\$6	\$6,000	23.2%
AG Dan Rickabaugh	Area 8	10	33,782	46,201	52.9%	\$93.66	\$435	\$24,445	\$9,441	\$7,162	\$27	\$13,650	52.5%
AG Andrew Hodges	Area 9	14	30,982	50,300	62.3%	\$135.12	\$2,770	\$31,348	\$4,990	\$2,202	\$9	\$9,535	23.1%
AG Buddy Smith	Area 10	-3	34,245	29,550	59.8%	\$90.55	\$1,050	\$17,658	\$6,000	\$1,840	\$9	\$10,680	17.2%
AG Candy Surkin	Area 11	-2	13,418	15,250	58.2%	\$62.49	\$85	\$8,874	\$2,730	\$940	\$7	\$4,150	22.7%
AG Cathy Golson	Area 12	10	32,151	35,250	67.2%	\$147.18	\$672	\$23,695	\$6,289	\$1,386	\$9	\$7,300	19.0%
Totals		39	330,643	405,771	54.8%	\$84.59	\$13,083	\$222,483	\$73,617	\$29,506	\$11	\$99,630	29.9%



## Top Giving Clubs (Annual Fund)

### Top Clubs by % of AF Goal Achieved

1	Clemson	149%
2	Pleasantburg	124%
3	Greenville Evening	114%
4	Greater Anderson	107%
5	Rock Hill	107%

### Top Clubs by AF Per Capita

1	Greenville Evening	\$503.53
2	Emerald City	\$403.73
3	Seneca	\$160.32
4	Newberry	\$157.26
5	York	\$154.88

### Top Clubs by Total AF Giving

1	Greenville	\$33,612
2	Emerald City	\$22,205
3	Aiken	\$19,213
4	Greenville Evening	\$17,120
5	Newberry	\$11,008

## Top Giving Clubs (Polio)

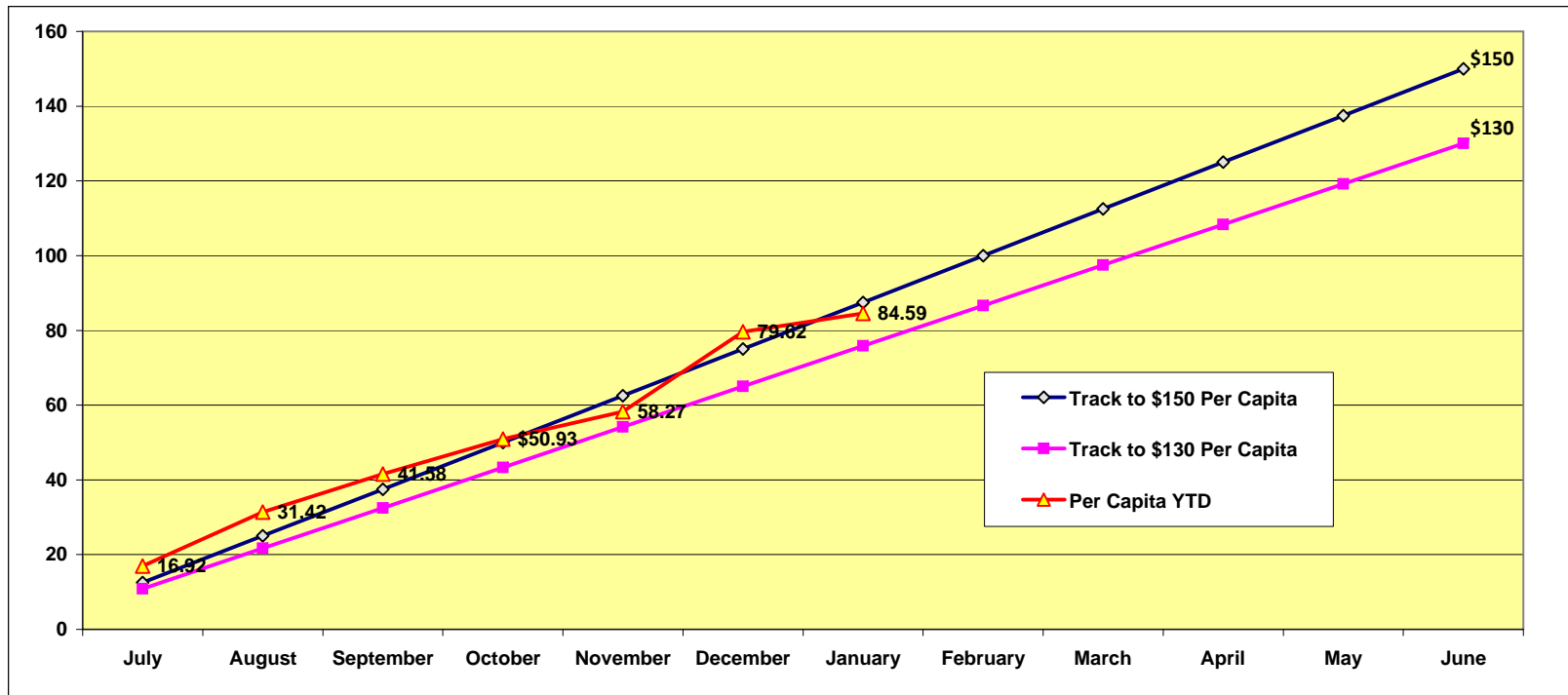
### Top Clubs by % of Polio Goal Achieved

1	Gaffney	160%
2	Batesburg-Leesville	147%
3	Aiken Sunrise	85%
4	Chester	81%
5	Clemson-Calhoun	79%

### Top Clubs by Total Polio Giving

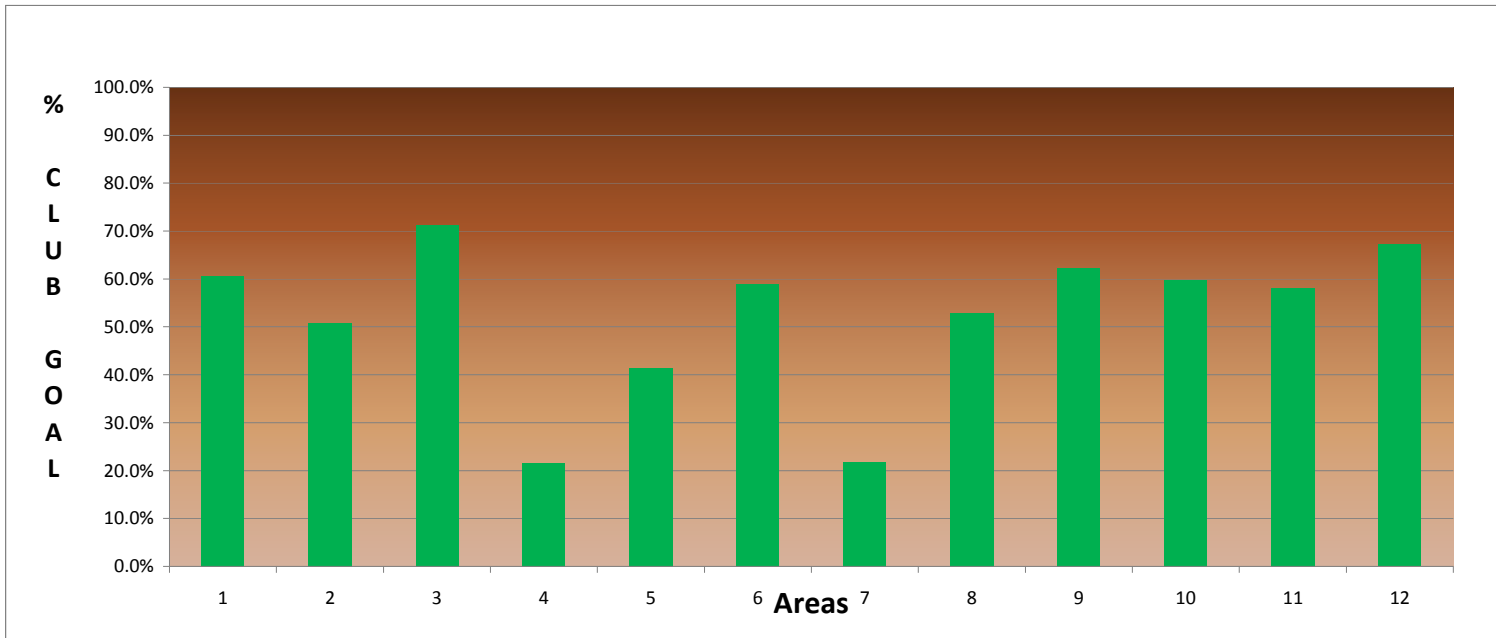
1	Aiken	\$3,790
2	Greenville	\$2,590
3	Aiken Sunrise	\$1,950
4	Pleasantburg	\$1,629
5	Anderson	\$1,608

6 Clubs have achieved 100% of their AF Goal  
 13 Clubs have achieved 75% of their AF Goal  
 0 Clubs have achieved their AF Challenge Goal  
 2 Clubs have achieved 100% of their Polio Goal  
 5 Clubs are over \$150 AF Per Capita  
 16 Clubs are over \$100 AF Per Capita  
 0 Clubs have given \$5 Total to the AF (Zero Giving)  
 0 Clubs have given \$5 Total to Polio (Zero Giving)  
 0 Areas have achieved 100% of their AF Goal  
 0 Areas have achieved 75% of their AF Goal  
 0 Areas have achieved their total AF Challenge Goal  
 0 Areas are over \$200 AF Per Capita  
 4 Areas are over \$100 AF Per Capita



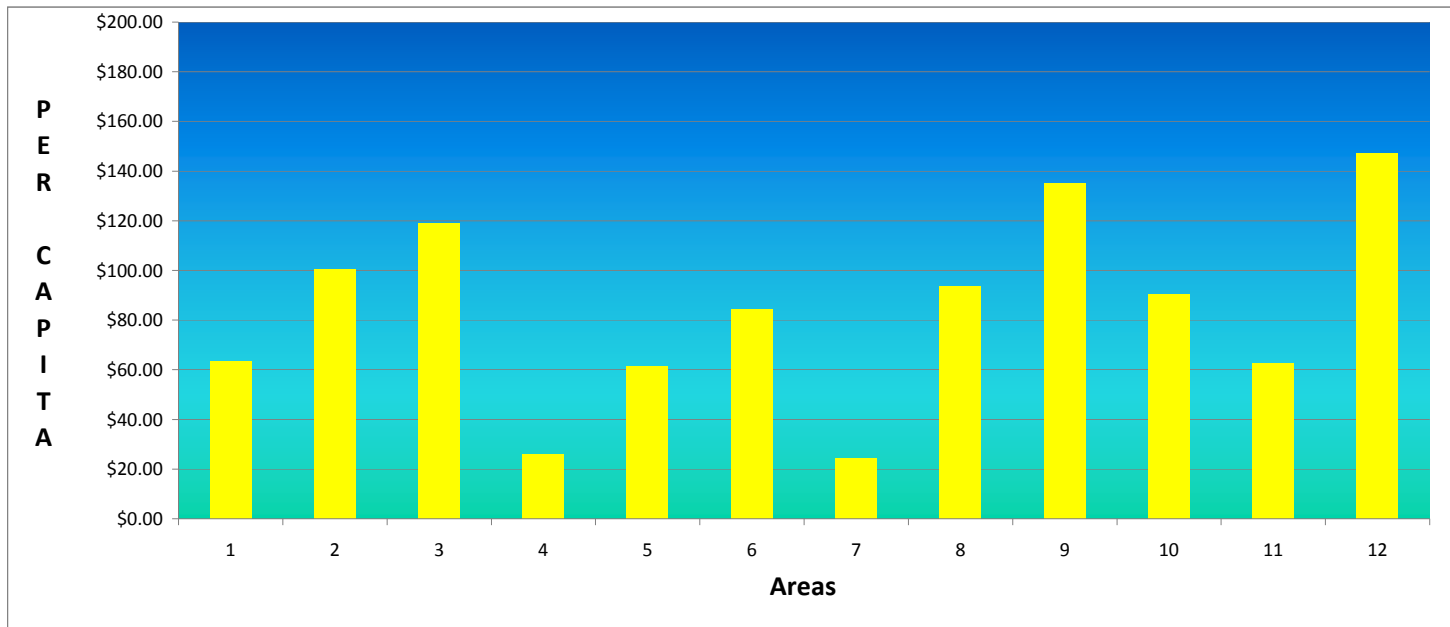


**% of Club AF Goal Achieved - By Area**



**AF Per Capita - By Area**

**Goal is \$150**



### All Clubs Ranked by % of AF Goal Achieved

1	Clemson	149%
2	Pleasantburg	124%
3	Greenville Evening	114%
4	Greater Anderson	107%
5	Rock Hill	107%
6	Newberry	103%
7	Twin City of Batesburg-Leesville	96%
8	Emerald City	93%
9	Seneca	91%
10	Westminster	86%
11	Mauldin	80%
12	Spartan West	77%
13	North Greenville	76%
14	Greater Greer	75%
15	The Foothills	73%
16	Fountain Inn	70%
17	Greenville	69%
18	York	69%
19	Aiken	65%
20	Greenville Breakfast	59%
21	Inman	58%
22	Winnsboro	53%
23	Fort Mill	50%
24	Greenwood	45%
25	Simpsonville	45%
26	Seneca Golden Corner	44%
27	Greenville East	43%
28	Clemson-Calhoun	42%
29	EClub of the Carolinas	40%
30	Clinton	38%

### All Clubs Ranked by % of Polio Goal Achieved

1	Gaffney	160%
2	Batesburg-Leesville	147%
3	Aiken Sunrise	85%
4	Chester	81%
5	Clemson-Calhoun	79%
6	Pleasantburg	74%
7	Emerald City	66%
8	Westminster	65%
9	Newberry	63%
10	Spartan West	61%
11	Mauldin	60%
12	North Augusta	59%
13	Seneca Golden Corner	55%
14	Greenville	52%
15	Anderson	50%
16	Seneca	49%
17	York	42%
18	Aiken	40%
19	Clover	39%
20	Twin City of Batesburg-Leesville	33%
21	EClub of the Carolinas	31%
22	Greater Greer	30%
23	Clemson	30%
24	Pickens	25%
25	Union	25%
26	Greenville East	22%
27	Greenville Evening	22%
28	Fountain Inn	20%
29	Lake Wylie	18%
30	Spartanburg	13%



31	Laurens	36%
32	Golden Strip Sunrise	35%
33	Pickens	33%
34	Union	33%
35	Indian Land	32%
36	Aiken Sunrise	28%
37	Gaffney	25%
38	Clover	25%
39	Blacksburg	23%
40	Walhalla	22%
41	Chester	22%
42	Lake Wylie	19%
43	Fair Play	18%
44	North Augusta	16%
45	Lancaster Breakfast	16%
46	North Spartanburg	12%
47	Easley	11%
48	Anderson	11%
49	Abbeville	8%
50	Spartanburg	7%
51	Lancaster	2%
52	Batesburg-Leesville	1%
53		0%

31	Inman	11%
32	Lancaster Breakfast	7%
33	North Greenville	5%
34	Lancaster	5%
35	Clinton	3%
36	Greenwood	3%
37	Greater Anderson	2%
38	Rock Hill	1%
39		0%
40		0%
41		0%
42		0%
43		0%
44		0%
45		0%
46		0%
47		0%
48		0%
49		0%
50		0%
51		0%
52		0%
53		0%

### All Clubs Ranked by AF Per Capita

1	Greenville Evening	\$503.53
2	Emerald City	\$403.73
3	Seneca	\$160.32
4	Newberry	\$157.26
5	York	\$154.88
6	Pleasantburg	\$139.24
7	Greater Greer	\$136.68
8	Spartan West	\$129.80
9	Fort Mill	\$122.44
10	Greenville	\$122.23
11	Twin City of Batesburg-Leesville	\$118.93
12	Aiken	\$109.16
13	Mauldin	\$103.66
14	Greenville Breakfast	\$101.88
15	Greater Anderson	\$100.83
16	EClub of the Carolinas	\$100.48
17	Greenville East	\$98.81
18	Westminster	\$98.29
19	North Greenville	\$92.50
20	The Foothills	\$89.06
21	Winnsboro	\$87.21
22	Fountain Inn	\$85.14
23	Walhalla	\$84.47
24	Rock Hill	\$83.27
25	Inman	\$82.50
26	Clemson	\$81.67
27	Aiken Sunrise	\$75.00
28	Seneca Golden Corner	\$68.75
29	Clemson-Calhoun	\$62.71
30	Clover	\$62.29
31	Clinton	\$56.90
32	Greenwood	\$56.36
33	Laurens	\$53.06

### All Clubs Ranked by Polio Per Capita

1	Clover	\$64.17
2	Batesburg-Leesville	\$62.86
3	Clemson-Calhoun	\$49.17
4	Aiken Sunrise	\$47.56
5	Pleasantburg	\$39.73
6	Spartan West	\$34.20
7	Westminster	\$32.43
8	Mauldin	\$31.03
9	EClub of the Carolinas	\$29.92
10	Emerald City	\$23.97
11	Chester	\$23.46
12	Seneca	\$21.97
13	Aiken	\$21.53
14	Anderson	\$19.85
15	York	\$19.69
16	North Augusta	\$19.67
17	Greenville Evening	\$19.12
18	Newberry	\$17.86
19	Seneca Golden Corner	\$17.60
20	Twin City of Batesburg-Leesville	\$16.47
21	Pickens	\$13.63
22	Union	\$11.70
23	Greenville East	\$11.67
24	Greater Greer	\$10.00
25	Greenville	\$9.42
26	Lake Wylie	\$6.25
27	Spartanburg	\$6.04
28	Inman	\$5.57
29	Clemson	\$3.31
30	North Greenville	\$2.67
31	Gaffney	\$2.58
32	Lancaster Breakfast	\$1.49
33	Clinton	\$1.38



34	Blacksburg	\$53.00
35	Simpsonville	\$52.62
36	Union	\$51.06
37	Pickens	\$48.84
38	Indian Land	\$37.21
39	Lake Wylie	\$29.15
40	North Augusta	\$23.33
41	Lancaster Breakfast	\$23.18
42	North Spartanburg	\$22.22
43	Easley	\$18.87
44	Golden Strip Sunrise	\$17.50
45	Fair Play	\$16.67
46	Anderson	\$16.30
47	Gaffney	\$13.98
48	Chester	\$13.46
49	Abbeville	\$11.36
50	Spartanburg	\$7.06
51	Batesburg-Leesville	\$1.63
52	Lancaster	\$1.49
53		\$0.00

34	Fountain Inn	\$1.08
35	Lancaster	\$1.04
36	Greenwood	\$0.99
37	Greater Anderson	\$0.67
38	Rock Hill	\$0.29
39		\$0.00
40		\$0.00
41		\$0.00
42		\$0.00
43		\$0.00
44		\$0.00
45		\$0.00
46		\$0.00
47		\$0.00
48		\$0.00
49		\$0.00
50		\$0.00
51		\$0.00
52		\$0.00
53		\$0.00

### All Clubs Ranked by Total AF Giving

1	Greenville	\$33,612
2	Emerald City	\$22,205
3	Aiken	\$19,213
4	Greenville Evening	\$17,120
5	Newberry	\$11,008
6	Fort Mill	\$9,060
7	Rock Hill	\$8,577
8	Clemson	\$7,268
9	Seneca	\$6,092
10	Greater Anderson	\$6,050
11	Greenwood	\$6,030
12	Pleasantburg	\$5,709
13	York	\$4,956
14	Westminster	\$3,440
15	North Greenville	\$3,330
16	Spartan West	\$3,245
17	Fountain Inn	\$3,150
18	Aiken Sunrise	\$3,075
19	Mauldin	\$3,006
20	Winnsboro	\$2,965
21	Walhalla	\$2,787
22	EClub of the Carolinas	\$2,613
23	Laurens	\$2,600
24	Simpsonville	\$2,473
25	Union	\$2,400
26	Pickens	\$2,100
27	Greenville East	\$2,075
28	Greater Greer	\$2,050
29	Greenville Breakfast	\$1,834
30	Twin City of Batesburg-Leesville	\$1,784
31	Inman	\$1,650
32	Clinton	\$1,650

### All Clubs Ranked by Total Polio Giving

1	Aiken	\$3,790
2	Greenville	\$2,590
3	Aiken Sunrise	\$1,950
4	Pleasantburg	\$1,629
5	Anderson	\$1,608
6	Clover	\$1,540
7	Emerald City	\$1,318
8	Newberry	\$1,250
9	Chester	\$1,220
10	Clemson-Calhoun	\$1,180
11	Westminster	\$1,135
12	Spartanburg	\$1,130
13	Mauldin	\$900
14	Batesburg-Leesville	\$880
15	Spartan West	\$855
16	Seneca	\$835
17	EClub of the Carolinas	\$778
18	Greenville Evening	\$650
19	York	\$630
20	Pickens	\$586
21	Union	\$550
22	Seneca Golden Corner	\$352
23	Clemson	\$295
24	North Augusta	\$295
25	Twin City of Batesburg-Leesville	\$247
26	Greenville East	\$245
27	Gaffney	\$160
28	Greater Greer	\$150
29	Lake Wylie	\$125
30	Inman	\$111
31	Greenwood	\$106
32	Lancaster Breakfast	\$100

33	Lancaster Breakfast	\$1,553
34	Clemson-Calhoun	\$1,505
35	Clover	\$1,495
36	The Foothills	\$1,425
37	Seneca Golden Corner	\$1,375
38	Anderson	\$1,320
39	Spartanburg	\$1,320
40	Indian Land	\$1,265
41	North Spartanburg	\$1,000
42	Easley	\$1,000
43	Gaffney	\$867
44	Chester	\$700
45	Lake Wylie	\$583
46	Blacksburg	\$530
47	Abbeville	\$500
48	North Augusta	\$350
49	Golden Strip Sunrise	\$245
50	Fair Play	\$200
51	Lancaster	\$100
52	Batesburg-Leesville	\$23
53		\$0

33	North Greenville	\$96
34	Lancaster	\$70
35	Greater Anderson	\$40
36	Clinton	\$40
37	Fountain Inn	\$40
38	Rock Hill	\$30
39		\$0
40		\$0
41		\$0
42		\$0
43		\$0
44		\$0
45		\$0
46		\$0
47		\$0
48		\$0
49		\$0
50		\$0
51		\$0
52		\$0
53		\$0

### All Areas Ranked by % of AF Goal Achieved

1	AG Beth Padgett	71.2%
2	AG Cathy Golson	67.2%
3	AG Andrew Hodges	62.3%
4	AG Crossie Cox	60.6%
5	AG Buddy Smith	59.8%
6	AG Chad Bordeaux	59.0%
7	AG Candy Surkin	58.2%
8	AG Dan Rickabaugh	52.9%
9	AG Steve Bahan	50.9%
10	AG Gene Moorhead	41.4%
11	AG Rebecca Melton	21.8%
12	AG Franca Meloncelli	21.5%



### **All Areas Ranked by AF Per Capita**

1	AG Cathy Golson	\$147.18
2	AG Andrew Hodges	\$135.12
3	AG Beth Padgett	\$119.08
4	AG Steve Bahan	\$100.68
5	AG Dan Rickabaugh	\$93.66
6	AG Buddy Smith	\$90.55
7	AG Chad Bordeaux	\$84.35
8	AG Crossie Cox	\$63.56
9	AG Candy Surkin	\$62.49
10	AG Gene Moorhead	\$61.31
11	AG Franca Meloncelli	\$26.05
12	AG Rebecca Melton	\$24.17

### **All Areas Ranked by Total AF Giving**

1	AG Beth Padgett	\$46,560
2	AG Andrew Hodges	\$31,348
3	AG Dan Rickabaugh	\$24,445
4	AG Cathy Golson	\$23,695
5	AG Chad Bordeaux	\$19,485
6	AG Buddy Smith	\$17,658
7	AG Crossie Cox	\$16,143
8	AG Steve Bahan	\$13,894
9	AG Candy Surkin	\$8,874
10	AG Gene Moorhead	\$7,848
11	AG Franca Meloncelli	\$7,215
12	AG Rebecca Melton	\$5,318