

7750

ROTARY INTERNATIONAL

Click to see how
the Foundation
provides life-
changing medical
care to mothers
and children in
Haiti.



District Governor

TOM FAULKNER

DG2014@rotary7750.org

H: 864-895-6054

M: 864-430-3023

119 Blue Water Trl.

Taylors, SC 29687

Rotary Club of

Greater Greer



Racing ducks, building Habitat Homes, and training Haitians

District Conference celebrates Service Above Self!

I hope you are part of the privileged team of committed Rotarians who are enjoying the 2014-15 District Conference being held this weekend at the Embassy Suites in Greenville. We welcome John Blount, our President's Representative, to Greenville. We are excited to hear about his Rotary experience as well as fill us in about how Rotary is shaping up during the coming years both in the U.S. and around the world.

I can't wait to hit the dance floor on Saturday night to the beach music tunes of the Sons of the Beach Duo. Our Light Up Rotary dancers have now been practicing for the entire year to wow fellow Rotarians with their amazing dance moves that make the concept of choreography a total joke. For those of you who are young at heart, our Youth Exchange students will be dancing with you for a fee with the proceeds going to support the Youth Exchange Program. If you are really lucky, you may even learn the famous Duck Strut.

Saturday morning will be an excellent opportunity to see firsthand what we are doing in developing countries including

Haiti, Honduras, El Salvador, and Guatemala. Chuck Gallagher will be challenging us with a moving ethics talk not to be forgotten. We shall hear from our Group Study Exchange Team about their visit to the Philippines in March. Our Youth Exchange students will share their amazing, life changing journeys. Expect to learn more about local community activities such as Early Act First Knight and other similar efforts that will be highlighted at the House of Friendship.

Work on Habitat houses is proceeding both with the North Spartanburg house and on Habitat houses in Greenville. I hope some of you take time to participate in that activity. Your Presidents have the contact information.

Then we have the incredible Duck Derby. It is not too late to buy your tickets right up to the mad duck race down Reedy River Falls, which will take place early Saturday afternoon.

Saturday night Councilman Joe Baldwin will present us with a Greenville County Proclamation declaring May 1-3 as
More, page 2→

2014-15 GOALS

MEMBERSHIP 2734 (+100) | **CURRENT: 2642**

FOUNDATION

\$357,000 ANNUAL FUND-SHARE | **\$233,901 ACHIEVED**\$54,000 POLIOPUS | **\$57,746 ACHIEVED**41 PAUL HARRIS SOCIETY | **38 ACHIEVED**20 BEQUEST SOCIETY | **9 ACHIEVED**75 BENEFACTORS | **4 ACHIEVED**10 NEW MAJOR DONORS | **5 ACHIEVED**

Area 8 clubs have been hard at work in Guatemala on several projects. Read about them on pages 7-8.



Houston, we have a problem

(but we have teams of people ready to help)

BY DISTRICT GOVERNOR ELECT TERRY WEAVER

Misquoted in the film Apollo 13, Astronaut Jack Swigert actually said, “Houston, we’ve had a problem here.” Thus began a root cause and corrective action saga involving hundreds of engineers and thousands of man-hours on the ground by a team at the cutting edge of space flight. These guys actually **were** rocket scientists.

Thankfully, three astronauts had radio communications, telemetry and a huge team of experts to fall back upon. As it turns out, the three guys marooned in space could never have either determined what had happened or devised a successful plan to save their lives on their own.

So, what happens in a business or any other organization, such as a Rotary club, when something is wrong? Many times, nothing. For one of two reasons—either they don’t “get” that it’s important to fix it, or they just don’t care (or care enough to do something about it).

In other cases, the leadership recognizes that they have a couple of choices. First, they could invest a lot

of time troubleshooting the root cause of the problem, then even more time investigating and studying possible solutions. That is, if they have enough talent and experience on hand to figure it out themselves (and they don’t run out of time).

Or, they can find (usually hire) someone outside to help them.

How does this apply to a Rotary club? There’s about a 90% correlation, in my experience. Clubs who have membership problems, for example, don’t seem to just have them temporarily. These problems drag on for a decade or more, depending on how long it takes the club to lose enough members to go out of business. That happens, on average, every two years in our District. So, what do they do? In many cases, it appears, nothing (see 2 reasons above). Otherwise, they may find that figuring it out themselves can be really frustrating—when you don’t know how to do something, it usually makes it worse by trying more things that don’t work.

Where could your club hire

someone to help solve a problem? Thankfully, you don’t need to. You have a list of volunteers in the form of **District Resource Chairs** who will work with your club to not only figure out the root cause of your problem, but also help you find some intentional strategies by which to fix it. In the case of membership, the **Grow Rotary Action Team** is getting up to speed, and can be engaged to help. Your club doesn’t support The Rotary Foundation? It’s probably for lack of understanding. Engage your District Foundation team to help with an awareness and training campaign. Your Assistant Governor and your District Governor will help if you know you need it.

You’re not all alone out there. You’re part of a 110-year-old organization that does a lot of things right in a lot of places. If it isn’t going right at your place, look outside for some help to figure out why.

**NEXT MONTH—
CLUB ASSESSMENT**

Tom’s column— continued from page 1

Rotary Weekend. We shall then announce the Rotary Club, Interact Club, and Rotaract Club winners of the Presidential Citation that will be presented by our President’s Representative John Blount who will then challenge us to look to a bright and productive future as Rotarians.

Sunday we shall honor those Rotarians who have passed away during the last year, always a moving and inspiring multi-faith service. David Shaner will share with us best business practices and the value of positive, principled thinking in business. District Governor Elect Terry Weaver will give us a taste of the Rotary year ahead culminating in the RI Convention in Seoul, Korea. John Blount will continue to inspire us with a final sendoff before he heads back to California.

Thanks in advance for all who are making the commitment to being with us this weekend. This year has been such a fun-filled and inspiring year for me as I have had the privilege of seeing the amazing, creative projects and activities you are doing with your Rotary Clubs and with

Click the graphic to see the Duck Dance.

your communities.

Let’s all finish off the year strong by continuing to grow our Rotary Clubs, meet our Foundation goals, and relish in the fellowship and networking that continue to be special gifts to each of us.

Light Up Rotary!



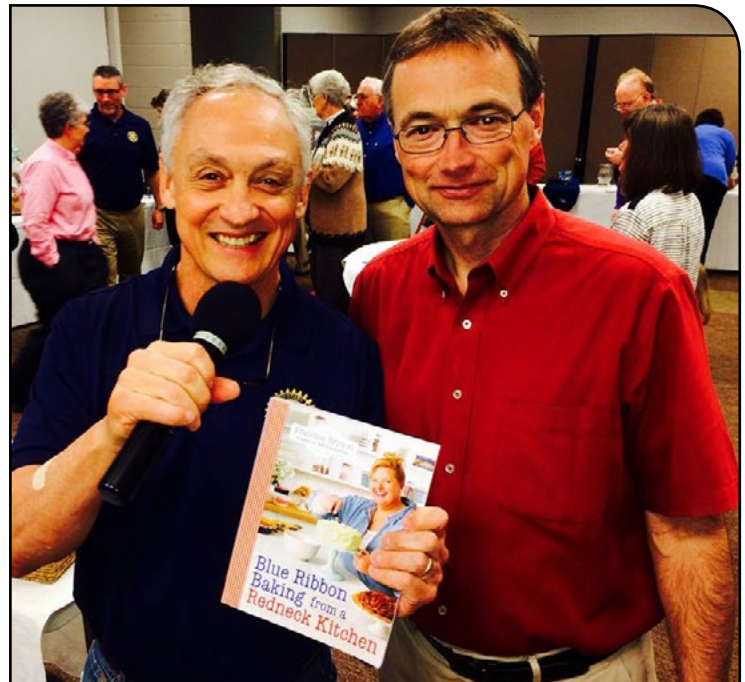
Francine Bryson, the \$300 pie, and the winning bidder.



The quilt was handmade by Pickens Rotarian and district 7750 treasurer Linda Cassell.



Pickens Rotarian Carol Storz, staffing a table at the silent auction.



Pickens Rotarians Paul Giddings and Davey Hiott holding Francine Bryson's cookbook, "Blue Ribbon Baking from a Redneck Kitchen."

A \$300 PIE FO PICKENS ROTARY (at event that raised \$10,879 for the club)

Pickens Rotary held its 9th annual Spaghetti Dinner and Auction fundraiser on March 14 to benefit United Way of Pickens County's programs for the homeless. More than 300 people attended this annual event, which includes delicious homemade spaghetti sauce and desserts, a live and silent auction, and live bluegrass music performed by the Hallmans. A chocolate, peanut butter and bacon pie (sounds weird, but tastes great!) made by Pickens County resident Francine Bryson, National Pie Champion and finalist on CBS's American Baking Competition, was purchased for a winning bid of \$300 by a lucky auction participant. The event raised a total of \$10,879.



The Rotary Club of Union has been busy with its events during the month of April. We hosted our second annual Rotary Club Circus April 17-19, with two shows on each day.



The Union County High School Department of Visual & Performing Arts brought a piece of Shrek the Musical to the Union Rotary Club in April. On Thursday, April 23, the club hosted its annual Rotary Dinner Theatre at Union County High School, where the arts department at the school did a FANTASTIC job with the musical, Shrek.



Rotarian Lisa Fowler is a member of Leadership Union and welcomed Rotarian Torance Inman to talk more about the organization. Youth Leadership Union and Leadership Union both are under the umbrella of the Union Chamber of Commerce. Leadership Union has the desire to educate people more about the city, county and state they live in. Youth Leadership Union County is designed to identify, develop and motivate new leadership for the Union County community.



Rotarian John Gregory welcomed Jenny Crocker, Volunteer Coordinator for Medi Home Hospice. Jenny talked to our club about the partnership with Medi Home Hospice and We Honor Veterans program. The We Honor Veterans program helps to better recognize and serve the needs of Veterans with an end of life diagnosis. They need compassionate volunteers that have served our country and understand the unique issues that our Veterans patients are facing.



Union County High School football coach Steve Tanneyhill discussed his goals for the team, plans for a State Championship, and more. Tanneyhill has been the UCHS football coach since 2012. Pictured: Rep. Mike Anthony, Clerk of Court Freddie Gault, UCHS football coach Steve Tanneyhill, Union County Schools Superintendent Kristi Woodall.



Clubs around our district continue to help educate young children about water safety through the Josh the Otter program.

Otter Spotter Day: May 4

to raise awareness for May as Water Safety Month

The Joshua Collingsworth Memorial Foundation (JCMF) and its volunteers are posting on social media outlets with hundreds of pictures taken from around the world with the simple question, "Are you an Otter Spotter?" Hundreds of volunteers in over 100 cities around the United States and worldwide are participating in the fifth annual International Otter Spotter Day May 4 to promote water safety and drowning prevention in their communities and on the worldwide web. The majority of the photos will be shared on the foundation's Facebook page, www.facebook.com/joshtheotter and at the Twitter and Instagram hashtag

#otterspotterday.

Joshua, the foundation's namesake, was 2 and ½ years old when he died from a pool drowning incident. According to the Center for Disease Control and Prevention, drowning is the number one cause of unintentional death for children 1-4 and second leading cause of unintentional death for all children 1-14. While the statistics are staggering, drowning has not gained the necessary public and media attention needed to help prevent these tragedies from occurring. Otter Spotter Day is helping to engage not only the media but also the global community... one Otter Spotter at a time.



Four ways to support the Rotary Youth Exchange Scholarship Program

1 Promote the opportunity that RYE Scholarships are available. The target group is current 8th -10th graders in your local schools. This allows top students to plan their course work so they can study abroad during their junior or senior year.

2 Sponsor and/or host a RYE student next year. Now is the time for clubs to plan for participation in 2016-17.

3 Not sure your club can host or sponsor? Help another Rotary club do so by co-sponsoring and joining in their program. The student(s) will become active

members of your club, the school and the community.

4 Make a personal, club, or business contribution in support of the Rotary Youth Exchange Scholarship Program through the District's 501-C3 Foundation. Contributions should be made payable to: D7750 Rotary Charities /Youth Exchange. In most cases, donations qualify as a charitable tax deduction.

Contact Jack Newby for details: YouthExchange@Rotary7750.org

The true value of the exchange scholarship is estimated at more than \$20,000. Include the Rotary Youth Exchange as one of the scholarships your club awards each year. The Rotary Youth Exchange Committee is available to answer questions and assist you.

Current and Future Rotary Youth Exchange Students 2015-16

BELGIUM

Lizzie Hagen

Sponsored by
Westminster and
Area Two Clubs
Living in Belgium
until June 2015 –
Long Term



Allison Moore

Sponsored by
Greenville Evening
Going to Italy –
August 2015 – Long
Term



Jean Ndayambaje

Hosted by Area Two
Rotary Clubs
Westminster
Primary
Living in
Westminster until
July 2015 – Long
Term



Benedetta Serra

Hosted by
Greenville Evening
Arriving August
2015 – Long Term



Kylie Wallace

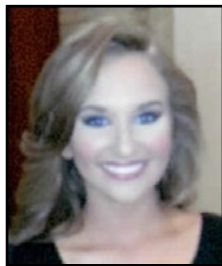
Sponsored by Seneca
Departing June 2015
– Short term



GERMANY

Lauren Long

Sponsored by
Walhalla
Departing June 2015
– Short Term



Tamara Loderer

Hosted by Walhalla
Arriving July 2015 –
Short Term



ITALY

Morgen Cvetko

Sponsored by
Laurens
Living in Udine,
Italy until July 2015 –
Long Term



Greg Pedulla

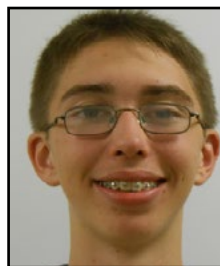
Hosted by Laurens
Living in Fountain
Inn until July 2015 –
Long Term



SLOVAKIA

Joe Marshall

Sponsored by North
Greenville
Departing August
2015 – Long Term



Iva Kucerova

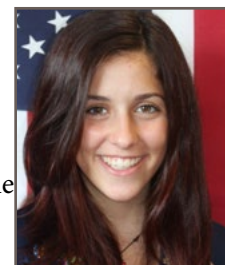
Hosted by North
Greenville
Arriving August
2015



SPAIN

*Clara Clement-
Canchal*

Hosted by
Pleasantburg
Living in Greenville
until July 2015 –
Long Term



Silvia Riesco

Hosted by
Spartanburg
Arriving July 2015
– Short Term



*Catherine
Chapman*

Sponsored by
Spartanburg
Departing June
2015 – Short Term



TAIWAN

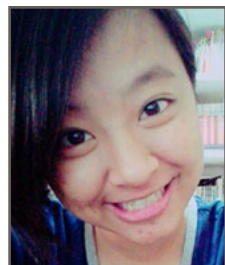
Brandon Cobb

Sponsored by Fair
Play and the Area
Two Rotary Clubs
Departing August
2015 – Long Term



Etta Chang

Hosted by Fair
Play and the Area
Two Rotary Clubs
Arriving August
2015 – Long Term



Area 8 clubs at work in GUATEMALA:

BY MIKE PEREYO
ROTARY CLUB OF NORTH AUGUSTA

Pacaya Volcano School:

Since 2010 a group of Rotarians from Aiken, Aiken Sunrise, Twin City Batesburg-Leesville and North Augusta Rotary Clubs, have gone to this school. Rotarians from North Augusta went on the first trip to provide books to a school that was partially destroyed by a volcanic eruption in May 2010. The Guatemalan government wanted to close it but the small administration asked for assistance. That year we provided all the necessary books and supplies for the school to continue operating. A local internet company fixed the roof and some walls that were burned. The teachers became volunteers.

The following year we were able to obtain a District grant to match funds collected from the clubs and part of the remaining needed equipment was obtained, and the teachers were rehired by the government. The school now has toilets for boys and girls, septic system., running water, desks for children, equipment for the school, TVs, DVDs. VCRs computers for teachers and necessary items to function as a school.

Thanks to all the Rotarians that were so involved, especially Lyn Kenney, Jim Huff, Chuck Munns, Del Hickey, Bruce Hoover, Walker Posey, Kathy Padgett, Joseph & Gail Shields, and Mike Pereyo

Handicapped Children Center:

We have been involved with this center for mentally and physically handicapped children since 2012. At the time their most urgent need was for wheelchairs, walkers, crutches and activity books and toys for the children. The four clubs of area 8 did a fantastic job of collect-

ing on a donation basis 16 wheel chairs, almost 30 walkers and a great number of crutches and other equipment for handicapped persons. Those were shipped to Guatemala. At the time there were 15 children that could not walk at all; today in 2015 that number is 5. The others were able to walk due to the assistance provided in building their muscles by use of wheelchair, then using a walker, then crutches and then their feet. It has been a great experience for us that have seen the progress of the children at this center. The Rotary clubs working together along with District Grants have immensely helped the quality of life of the children and their parents. Efforts are now underway to obtain more funds to start them in activities that will help in making them a self sustaining entity.

Thanks to all the Rotarians that were so involved, especially Lyn Kenney, Jim Huff, Chuck Munns, Del Hickey, Bruce Hoover, Walker Posey, Kathy Padgett, Joseph & Gail Shields, and Mike Pereyo.

Lake Atitlan Projects (Reforestation, ecological stoves and latrines)

This project started as a way to help in eliminating an infestation of bacteria in the lake due to people washing in the lake, human waste drainage, trash run off to lake, and land slides due to deforestation of the mountains around the lake as the main important issues.

The project is headed by four local Rotary Clubs who asked us for assistance. Our first project was to help with donating biodegradable bags (over

continued on next page





JUNE 7-13

ERSKINE COLLEGE

DUE WEST

BY JENNIFER ERWIN,
7750 RYLA CHAIR

RYLA is getting closer and as of right now we have about 60 delegates. These young men and women are in for such a treat! The deadline has passed for you to submit a delegate, but if you know of someone who needs to attend, please email me at jennifer.erwin@edward-jones.com to talk about it.

Thank you all for supporting this amazing program and looking forward to seeing those of you who said you'd like to come have lunch with us the Thursday during RYLA. I still have room for 5 people at the lunch that day. Let me know if you'd like to attend.

GROW ROTARY ACTION TEAM

—open for business

BY DGN LANCE YOUNG, GRAT CHAIRMAN

Is your club in need of Intentional Strategies to attract and retain members? The Grow Rotary Action Team (GRAT) might be the answer. This new committee will launch on 1 July 2015 and help clubs who ask with membership plans & strategies. The team will not impose itself on those who don't ask for GRAT assistance.

The vision of GRAT is to help clubs who have had trouble growing membership. The GRAT team is comprised of past presidents who successfully grew their clubs during the year they were president—these people know what they're doing. Upon request, we will assign a GRAT member as your club's coach, mentor and advisor to help you increase membership. The team will not go out and get members for the club – that's the club's job.

The GRAT member assigned to your club will help assess your current membership situation and strategies that have (or haven't) worked. They'll help you build intentional strategies that have worked to attract members to other clubs.

They'll stick with you to make sure the plans you've laid are working, or adjust as necessary. Perhaps retention is the problem. Your GRAT member will help with that, too.

DGE Terry, DGND Ed Irick and myself are all committed to building membership over the next several years across all demographics. If you're growing membership, most other factors take care of themselves. More folks to do good in the community and the world, better networking opportunities for club members, less financial pressure on the club, a larger pool of future leaders, and the list just goes on and on.

Membership, Membership, Membership is the goal. Let's work together to make this happen for the betterment your club, District 7750 and Rotary's future. To apply for GRAT assistance, visit the [Grow Rotary Action Team](#) application page.



Area 8 clubs at work in GUATEMALA—

continued from previous next page

270,000 bags – a one year supply) for the nursery they use to grow plants and trees for reforestation of the area around the lake.

After seeing what they are trying to accomplish we have been involved in assisting with other grants and we are now part of a Global Grant. The process for clean up of the lake is as follows:

- Make sure every family has an ecological stove. Ecological stoves use 70 percent of less wood in cooking. That means fewer trees will be cut down, avoiding landslides into the lake.
- Make sure every family also has an ecological latrine where the fecal waste is collected in a plastic bag and added the ashes from the ecological stove. This mix is then

collected and in a period of two months turns into fertilizer. This bag is collected by a collection service, and the people are paid for it by the company that will process it.

- The above process will allow the family to have more time available due to not having to cut as many trees and more efficient use of wood. Also the health aspect of smoke inside their homes has been addressed by an outside exhaust stove.
- The families can obtain a stove or a Latrine or both by working at the nursery free of charge for up to 700 hours, either at the nursery or planting trees in the Mountains around the lake.

In addition to the above the



Rotary clubs are installing Pilas (washing stations) around the lake for people to wash their clothes. The waste water is cleaned up of chemicals and pumped back to the lake.

The project is on going and a respectable progress can be seen in the quality of water at the lake.

Thanks to the Rotarians that were so involved, especially Lyn Kenney, Jim Huff, Chuck Munns, Del Hickey, Bruce Hoover, Walker Posey, Kathy Padgett, Joseph & Gail Shields, and Mike Pereyo.



PDG Gary Goforth
D7750 Foundation Chair
E-Club of the Carolinas
M: 239-247-3126
dg2011@rotary7750.org

District 7750 Rotary Foundation

(THROUGH 4/26/2015)

Annual Fund Goal	\$319,935
	(+3.2%)
Annual Fund Total	\$234,301
	(73.2% goal)
Annual Fund Per Capita	\$ 88.95
Endowment Fund	\$ 8,504
PolioPlus	\$ 88,490
Total Giving	\$302,551
\$0 Giving Clubs	0

How we are oing with the Zone 33 Foundation Goals

– better, but still need work!

- Annual Giving contributions YTD at least 10% higher than LYTD: **+3.2%**
- All clubs have an annual giving goal recorded in RCC: **100%** Great work!
- All clubs have an annual giving contribution recorded: **100%** Great work!
- At least 87% of Rotarians are EREY Members: **64.1%**
- At least 60% of Rotarians are Sustaining Members: **26.0%**
- Increase PHS membership by at least 10%: **+5.41%**
- Add at least 3 new Major Donors: **+5** Great work!
- All clubs have a polio contribution recorded: **74%**
- All clubs have a polio goal recorded in RCC: **100%** Great work!
- Transfer 20% of DDF to polio: **100%**
- Cash contributions to polio average at least \$1,000 per club: **\$1,009/club** Great!
- Increase use of Rotary Direct by at least 10: **+1**

2014-15 Grant Preparation Schedule For District 7750 Clubs

- April 30 – Deadline for District Grant applications from Clubs to District
- June 1 – Grant awards published by District
- August 1 – Targeted distribution of District Awards
- March 31, 2016 – Deadline for completion of District Grants and filing of final reports (2015-16)

World Immunization Week: Protecting children through lifesaving vaccines

This year's observance of *World Immunization Week*, April 24-30 April, signaled a renewed effort to prevent an estimated 2 to 3 million deaths worldwide from vaccine-preventable diseases, including polio, by closing immunization gaps. The extensive polio-eradication infrastructure created by Rotary, its partners in the *Global Polio Eradication Initiative (GPEI)*, and governments and health ministries provides a model for this effort.

Rotary, the World Health Organization (WHO), UNICEF, and the U.S. Centers for Disease Control & Prevention (CDC) joined together in 1988 to form GPEI with the goal of protecting the world's children by *eradicating polio*. At that time, the disease paralyzed more than 1,000 people— most of them young children—worldwide every day. Over the years, Rotary and its partners have reduced the number of polio cases by 99 percent, to fewer than 400 cases in 2014, and there are now only three countries in which polio transmission has never been stopped.

This progress has been won by millions of volunteers and health workers who immunize children in hard-to-reach communities and establish real-time global monitoring and response capacity.

Please send your club's contributions to PolioPlus and the Annual Fund as soon as possible to avoid the end of the year rush and help us improve our 2014-15 statistics!

POLIO ERADICATION UPDATE

BY AMELIA NELSON
DISTRICT 7750 POLIO CHAIR

There are two bills before Congress asking for continued funding for two agencies of the U.S. Government to support the global polio eradication campaign, the Centers for Disease Control and Prevention (CDC) and the U.S. Agency for International Development (USAID). For Fiscal Year 2016 Rotary International is seeking:

1. \$168.8 million for the polio eradication efforts of the CDC
2. \$59 million for the polio eradication activities of USAID

As you know, the Global Polio Eradication Initiative (GPEI) is a partnership spearheaded by CDC, RI, WHO and UNICEF, with support from the Bill and Melinda Gates Foundation.

Rotary has contributed \$1.3 billion to the GPEI which represents the largest contribution by an international service organization to a public health initiative ever. These funds have benefited 122 countries by providing vaccine and the equipment needed to keep it at the right temperature and by supporting the means to ensure it reaches every child.

Our funds also support the training of health workers and the laboratories that monitor polio transmission and test suspected cases of polio. More importantly, tens of thousands of our volunteers have been mobilized to work together with their national



ministries of health, UNICEF and WHO, and with health providers at the grassroots level in thousands of communities. Further, for the first time in history Africa has reported no cases of polio for six months which means Nigeria may have stopped the transmission of wild polio!

So where does your club stand in support of polio eradication? Clubs should at least have 50% of their goal by now. I realize that a few clubs have yet to hold their Polio Fundraiser, but all clubs below their 100% goal should review the status of reaching their goal.

For those clubs that have attained their 100% goal—and above—thank

you! Please continue your support of polio through the end of our fiscal year so that District 7750 may attain its goal of \$54,000.

To date \$53,585 has been submitted to TRF-Polio plus the District's DDF funds transferred in the amount of \$30,744.

If your club has funds that have not been submitted to TRF, please submit them as soon as possible. REMEMBER, if your club does not have a fundraiser, you can give your individual contribution of \$50 to meet DG Tom's goal of \$50/per capita.

Atlanta conference will educate us about child slavery

The Rotary Action Group against Child Slavery and sexual exploitation will sponsor a program May 11-12 at the Carter Center in Atlanta. The gathering will bring together survivors and advocates in the modern abolitionist movement, business leaders, and policy makers from around the world to discuss and seek solutions to the current systemic conditions that

make women and children vulnerable to sexual abuse, manipulation, and ultimately exploitation for profit as a criminal enterprise.

During the summit former U.S. President Jimmy Carter will give his input and guidance to proposed strategies and implementation structures. 2015 RIPE Ravi Ravindran will also address the group and state how im-

portant this cause is to Rotary. Attendees will also hear from both survivors and law enforcement officials.

This goes on quietly under our noses and we need to learn how to recognize and report it. Let's keep our youth safe and free.

For further information and/or a Club Program Contact: PDG Barbara Shayeb-Helou, bsh6890@aol.com.

7750 Membership & Attendance for March

Club	Members 6/30/2014	Current Members	Change	Meetings Held	Attend. %
Abbeville	49	46	-3	0	0.00
Aiken	172	181	9	5	74.08
Aiken Sunrise	40	42	2	4	86.01
Anderson	80	76	-4	2	51.02
Batesburg-Leesville	18	12	-6	4	77.08
Blacksburg	13	10	-3	5	59.99
Chester	50	51	1	4	59.09
Clemson	91	89	-2	5	68.27
Clemson-Calhoun	24	25	1	4	82.35
Clinton	32	32	0	4	53.10
Clover	26	27	1	4	65.74
EClub of the Carolinas	27	34	7	0	0.00
Easley	58	52	-6	5	82.50
Emerald City	52	54	2	4	80.19
Fair Play	15	13	-2	5	89.22
Fort Mill	77	79	2	4	45.34
Fountain Inn	37	37	0	5	74.32
Gaffney	61	64	3	4	70.05
Golden Strip Sunrise	14	13	-1	0	63.46
Greater Anderson	58	50	-8	4	71.27
Greater Greer	11	15	4	5	84.00
Greenville	270	272	2	2	62.83
Greenville Breakfast	24	18	-6	4	64.47
Greenville East	28	23	-5	4	78.00
Greenville Evening	29	36	7	4	67.00
Greenwood	104	105	1	2	76.19
Indian Land	31	33	2	5	55.15
Inman	20	21	1	4	70.00
Lake Wylie	27	21	-6	5	80.39
Lancaster	72	67	-5	4	64.90
Lancaster Breakfast	74	72	-2	4	66.08
Laurens	48	50	2	4	80.46
Mauldin	26	27	1	5	83.46
McCormick County	9	0	-9	0	0.00
Newberry	72	71	-1	2	85.00
North Augusta	15	15	0	4	73.21
North Greenville	34	37	3	4	58.02
North Spartanburg	42	50	8	5	77.65
Pickens	41	41	0	4	90.26
Pleasantburg	38	41	3	4	68.99
Rock Hill	102	105	3	2	62.78
Seneca	34	33	-1	4	62.50
Seneca Golden Corner	22	20	-2	4	67.95
Simpsonville	44	47	3	4	97.13
Spartan West	22	24	2	4	62.37
Spartanburg	179	184	5	4	46.55
The Foothills	15	15	0	2	56.66
Twin City	15	15	0	4	80.70
Union	44	47	3	5	66.23
Walhalla	31	33	2	5	64.38
Westminster	31	35	4	0	71.00
Winnsboro	38	39	1	4	75.00
Woodruff	15	15	0	4	68.75
York	33	33	0	4	60.00
Totals:	2634	2647	13		66.00
54 of 54 clubs reporting					



Wilfredo Leon, President of the Rotary Club of Mauldin, presents a \$1,000 check to Carol Browning, Executive Director of Greenville Literacy Association at the March 31 club meeting.

Mauldin joins Rotary Partnership for Literacy

The Rotary Club of Mauldin has joined the Rotary Partnership for Literacy. Funds provided through the partnership will help upgrade GLA's technology needs. Funds for technology for GLA are critical as adult literacy students must learn using computers in order to develop computer literacy as well as a skill for continued learning. Funds will provide a Rotary Scholarship Fund for the GED test, which doubled in cost in January 2014. Engaging Rotarians as tutors at GLA is another crucial part of the Rotary Partnership for Literacy. Other clubs participating in the Rotary Partnership for Literacy are the following: Greenville Evening Rotary Club, Greenville Breakfast Rotary Club, Simpsonville Rotary Club, Rotary Club of Greenville, Foothills Rotary Club, Greater Greer Rotary Club,

Membership Champions (new members and their sponsors in February)

New Member	Club	Sponsor	Classification
Allensworth, John Gilbert (GIL)	Aiken	Willson McKewn Williams Jr.	Financial Services
Boone, Terrell (TERRELL)	Greenville	Elizabeth Lyons	Financial Advisor
Bradick, Nicholas (NICK)	Lancaster	Jim Boling	Business
Brewer, Robert H. (BOB)	Greenwood	Carl M. Brock	Engineering - Civil
Brown, Kenneth G. (KENNY)	Aiken Sunrise	Rich Waugh	Business/Government Relations
Brownfield, Jon P. Sr. (JON)	Rock Hill	David A. Lyon IV	Financial Services
Burris, Matthew Wayne (MATTHEW)	Lake Wylie	Susie B Whitesides	
Coleman, Steve B (STEVE)	Emerald City	Brian Brewer	Education
Collins, David (DAVID)	Pickens	Paul Winter Giddings	Corporate Finance
Cummings, Ted Tucker (TED)	Aiken	Judy B. Chun	Insurance-Farm & Equine
Dawson, Heath (HEATH)	Rock Hill	Rachel Rion Ouellette	Banking
Dulgeroglu, Mihran (MIHRAN)	Greenville Evening	Ann Golden	Self Employed
Ellis, Lisa (LISA)	EClub of the Carolinas	Randell Patrick Stewart	Banker/Bank Manager
Forlaw, Nancy F. (NANCY)	Chester	James W. Fuller	Administrative Assistant
Forrest, Robert J. (BOB)	Aiken	Judy B. Chun	Law-General
Gaffney, Gary (GARY)	Greenville Evening	Ann H. Golden	Leadership Coach
Hamrick, Lyman Elliott (ELL)	Spartanburg	John F. Perry	
Hayes, Joseph G. (JOE)	Rock Hill	Rebecca Melton	Non-Profit Administration
Inman, Bill N. (BILL)	Aiken	Gary L. Stooksbury	Electrical Services-Cooperative
Kistner, Ferne (FERNE)	EClub of the Carolinas	Dianne Clarke-Kudless	
LaDow, Daniel (DANIEL)	North Augusta		
Lee, Larry G. (LARRY)	Pleasantburg	Eric J Baker MD	
Nimmons, William Neal (NEAL)	Seneca Golden Corner	Eddie Perry	
Pinckney, Lisa G. (LISA)	Rock Hill	Mary Pettus	Marketing
Priester, Kshatriya D. (KEYATTA)	Aiken	Barbara R. Morgan	Electrical Services-cooperative
Sprow, Carson (CARSON)	North Spartanburg	Charles W Jones	
Wolff, David (DAVID)	Spartan West	Kelly G. Banks	

FOUNDATION PAGES AHEAD

Check the trends

Following this page are several pages of information on Foundation giving. Note the trend graph on page 5 of that report. Per capita has turned northward, but parallel to \$130, last year's per capita, not CLOSING on it. We have some work to do in the field, although a couple of areas are looking really good. "On Track" would be 83% of goal.

**Rotary District 7750
Rotary Foundation
Monthly Progress Report**

A r e a	Club	As Of 4/23/15 Interim	Mbrs as of 7-1-14	AF Actual 2013-14	AF Goal 2014-15	% of AF Goal Achieved 2014-15	AF Per Capita 2014-15	AF MONTH	AF YTD 2014-15	Polio Total 2013-2014	Polio YTD 2014-15	Polio Per Capita 2014-15	Polio Goal 2014-15	Polio % of Goal
1	Anderson		80	\$4,025	\$3,050	218.2%	\$83.19	\$3,310	\$6,655	\$1,233	\$1,369	\$17	\$1,000	136.9%
1	Clemson		91	\$12,005	\$9,800	61.6%	\$66.36	\$240	\$6,039	\$1,360	\$1,350	\$15	\$4,900	27.6%
1	Clemson-Calhoun		24	\$370	\$2,500	113.2%	\$117.92	\$625	\$2,830	\$105	\$1,770	\$74	\$1,500	118.0%
1	Greater Anderson		58	\$5,355	\$5,250	45.1%	\$40.80	\$485	\$2,366	\$1,518	\$1,500	\$26	\$2,500	60.0%
	AG Lance Young	A-1 Totals	253	\$21,755	\$20,600	86.8%	\$70.71	\$4,660	\$17,890	\$4,215	\$5,989	\$24	\$9,900	
2	Fair Play		15	\$1,348	\$1,008	67.0%	\$45.00	\$0	\$675	\$5	\$0	\$0	\$750	0.0%
2	Seneca		34	\$2,760	\$3,516	120.5%	\$124.58	\$0	\$4,236	\$803	\$745	\$22	\$1,500	49.6%
2	Seneca Golden Corner		22	\$450	\$2,500	20.6%	\$23.41	\$0	\$515	\$173	\$97	\$4	\$1,100	8.8%
2	Walhalla		31	\$6,358	\$3,200	30.5%	\$31.45	\$0	\$975	\$5	\$120	\$4	\$5	2400.0%
2	Westminster		31	\$1,940	\$3,450	45.2%	\$50.32	\$0	\$1,560	\$1,445	\$200	\$6	\$1,150	17.4%
	AG Steve Bahan	A-2 Totals	133	\$12,855	\$13,674	58.2%	\$59.86	\$0	\$7,961	\$2,431	\$1,162	\$9	\$4,505	
3	Greenville		270	\$51,897	\$42,000	118.6%	\$184.55	\$25	\$49,829	\$3,259	\$2,450	\$9	\$2,500	98.0%
3	Greenville Breakfast		24	\$3,575	\$4,200	112.9%	\$197.58	\$0	\$4,742	\$1,125	\$0	\$0	\$1,200	0.0%
3	Greenville East		28	\$4,493	\$3,000	71.0%	\$76.04	\$100	\$2,129	\$805	\$925	\$33	\$1,500	61.7%
3	North Greenville		34	\$4,280	\$3,000	118.7%	\$104.71	\$0	\$3,560	\$5	\$0	\$0	\$0	0.0%
3	Pleasantburg		38	\$5,012	\$4,000	132.3%	\$139.21	\$85	\$5,290	\$2,100	\$3,202	\$84	\$1,000	320.2%
	AG Beth Padgett	A-3 Totals	394	\$69,256	\$56,200	116.6%	\$166.37	\$210	\$65,550	\$7,294	\$6,577	\$17	\$6,200	
4	Inman		20	\$1,873	\$3,300	57.6%	\$95.00	\$0	\$1,900	\$1,005	\$0	\$0	\$950	0.0%
4	North Spartanburg		42	\$6,854	\$3,400	72.1%	\$58.33	\$0	\$2,450	\$307	\$1,300	\$31	\$500	260.0%
4	Spartan West		22	\$3,026	\$2,600	17.3%	\$20.45	\$75	\$450	\$522	\$713	\$32	\$400	178.2%
4	Spartanburg		179	\$9,478	\$10,000	17.2%	\$9.58	\$95	\$1,715	\$12,309	\$7,784	\$43	\$10,000	77.8%
	AG Franca Meloncelli	A-4 Totals	263	\$21,231	\$19,300	33.8%	\$24.77	\$170	\$6,515	\$14,143	\$9,797	\$37	\$11,850	82.7%
5	Blacksburg		13	\$55	\$1,950	0.5%	\$0.77	\$10	\$10	\$5	\$0	\$0	\$5	0.0%
5	Clover		26	\$6,495	\$8,400	37.2%	\$120.08	\$0	\$3,122	\$3,772	\$2,456	\$94	\$4,000	61.4%
5	Gaffney		61	\$498	\$3,125	59.5%	\$30.49	\$504	\$1,860	\$5	\$100	\$2	\$100	100.0%
5	York		33	\$7,140	\$5,100	117.9%	\$182.26	\$1,002	\$6,015	\$1,002	\$1,013	\$31	\$1,360	74.5%
	AG Gene Moorhead	A-5 Totals	133	\$14,188	\$18,575	59.3%	\$82.76	\$1,516	\$11,007	\$4,784	\$3,569	\$27	\$5,465	65.3%
6	Fort Mill		77	\$22,080	\$9,500	161.7%	\$199.56	\$0	\$15,366	\$35	\$1,750	\$23	\$1,000	175.0%
6	Indian Land		31	\$744	\$4,650	30.6%	\$45.97	\$45	\$1,425	\$5	\$285	\$9	\$1,550	18.4%
6	Lake Wylie		27	\$3,125	\$2,712	65.9%	\$66.19	\$716	\$1,787	\$615	\$542	\$20	\$400	135.5%
6	Rock Hill		102	\$10,808	\$10,725	49.1%	\$51.58	\$25	\$5,261	\$30	\$1,711	\$17	\$1,500	114.1%
	AG Chad Bordeaux	A-6 Totals	237	\$36,756	\$27,587	86.4%	\$100.59	\$786	\$23,839	\$685	\$4,288	\$18	\$4,450	96.4%

A r e a	Club	As Of 4/23/15 Interim	Mbrs as of 7-1-14	AF Actual 2013-14	AF Goal 2014-15	% of AF Goal Achieved 2014-15	AF Per Capita 2014-15	AF MONTH	AF YTD 2014-15	Polio Total 2013-2014	Polio YTD 2014-15	Polio Per Capita 2014-15	Polio Goal 2014-15	Polio % of Goal
7	Chester		50	\$1,223	\$3,000	51.7%	\$31.00	\$0	\$1,550	\$5	\$150	\$3	\$1,500	10.0%
7	Lancaster		72	\$2,305	\$10,800	15.5%	\$23.26	\$0	\$1,675	\$1,005	\$0	\$0	\$3,700	0.0%
7	Lancaster Breakfast		74	\$3,933	\$11,100	0.1%	\$0.14	\$10	\$10	\$575	\$0	\$0	\$3,600	0.0%
7	Winnsboro		38	\$1,625	\$1,209	288.3%	\$91.71	\$0	\$3,485	\$380	\$250	\$7	\$136	183.8%
	AG Mary Sieck	A-7 Totals	234	\$9,086	\$26,109	25.7%	\$28.72	\$10	\$6,720	\$1,965	\$400	\$2	\$8,936	4.5%
8	Aiken		172	\$27,099	\$25,500	64.2%	\$95.17	\$100	\$16,370	\$7,166	\$3,853	\$22	\$8,600	44.8%
8	Aiken Sunrise		40	\$8,855	\$6,500	59.5%	\$96.74	\$100	\$3,870	\$4,128	\$2,743	\$69	\$2,000	137.1%
8	Batesburg-Leesville		18	\$2,772	\$2,700	0.4%	\$0.56	\$10	\$10	\$425	\$782	\$43	\$1,050	74.5%
8	North Augusta		15	\$1,976	\$2,700	9.3%	\$16.73	\$0	\$251	\$130	\$0	\$0	\$900	0.0%
8	Twin City of Batesburg-Leesville		15	\$2,007	\$2,256	87.7%	\$131.93	\$0	\$1,979	\$373	\$500	\$33	\$500	100.0%
	AG Liz Stewart	A-8 Totals	260	\$42,709	\$39,656	56.7%	\$86.46	\$210	\$22,480	\$12,221	\$7,878	\$30	\$13,050	60.4%
9	Abbeville		49	\$4,875	\$7,350	12.2%	\$18.37	\$800	\$900	\$580	\$0	\$0	\$2,450	0.0%
9	EClub of the Carolinas		27	\$5,573	\$6,300	58.0%	\$135.37	\$0	\$3,655	\$2,499	\$2,030	\$75	\$1,300	156.2%
9	Emerald City		52	\$23,797	\$8,002	118.2%	\$181.88	\$100	\$9,458	\$1,830	\$1,100	\$21	\$1,000	110.0%
9	Greenwood		104	\$10,835	\$5,815	101.0%	\$56.49	\$25	\$5,875	\$2,308	\$1,350	\$13	\$1,000	135.0%
9	McCormick County		9	\$2,205	\$1,800	25.0%	\$50.00	\$0	\$450	\$105	\$0	\$0	\$600	0.0%
	AG Andrew Hodges	A-9 Totals	241	\$47,284	\$29,267	69.5%	\$84.39	\$925	\$20,338	\$7,322	\$4,480	\$19	\$6,350	70.6%
10	Clinton		32	\$875	\$3,300	112.2%	\$115.75	\$0	\$3,704	\$5	\$200	\$6	\$200	100.0%
10	Laurens		48	\$5,880	\$6,500	63.2%	\$85.52	\$0	\$4,105	\$2,005	\$2,100	\$44	\$2,000	105.0%
10	Newberry		72	\$11,860	\$7,400	176.4%	\$181.25	\$1,100	\$13,050	\$1,163	\$1,100	\$15	\$1,000	110.0%
10	Union		44	\$7,070	\$6,600	80.8%	\$121.14	\$30	\$5,330	\$1,255	\$1,350	\$31	\$1,000	135.0%
	AG Buddy Smith	A-10 Totals	196	\$25,685	\$23,800	110.0%	\$133.62	\$1,130	\$26,189	\$4,428	\$4,750	\$24	\$4,200	113.1%
11	Fountain Inn		37	\$1,230	\$5,550	0.2%	\$0.27	\$10	\$10	\$5	\$0	\$0	\$1,850	0.0%
11	Golden Strip Sunrise		14	\$220	\$1,500	26.7%	\$28.57	\$35	\$400	\$5	\$0	\$0	\$1,300	0.0%
11	Mauldin		26	\$3,280	\$3,275	119.6%	\$150.60	\$0	\$3,916	\$355	\$700	\$27	\$1,300	53.8%
11	Simpsonville		44	\$7,243	\$6,000	57.7%	\$78.65	\$50	\$3,461	\$855	\$2,000	\$45	\$2,000	100.0%
11	Woodruff		15	\$80	\$592	95.0%	\$37.50	\$0	\$563	\$5	\$0	\$0	\$800	0.0%
	AG Chuck Morton	A-11 Totals	136	\$12,053	\$16,917	49.4%	\$61.39	\$95	\$8,349	\$1,225	\$2,700	\$20	\$7,250	37.2%
12	Easley		58	\$7,025	\$5,900	0.2%	\$0.17	\$10	\$10	\$1,055	\$0	\$0	\$1,770	0.0%
12	Greater Greer		11	\$2,542	\$2,700	165.0%	\$404.88	\$1,060	\$4,454	\$5	\$1,117	\$102	\$900	124.1%
12	Greenville Evening		29	\$12,593	\$12,000	80.7%	\$333.97	\$85	\$9,685	\$1,616	\$2,600	\$90	\$1,500	173.3%
12	Pickens		41	\$4,255	\$6,150	34.7%	\$52.04	\$0	\$2,134	\$1,005	\$2,189	\$53	\$2,050	106.8%
12	The Foothills		15	\$1,105	\$1,500	62.1%	\$62.13	\$0	\$932	\$5	\$0	\$0	\$375	0.0%
	AG Ed Irick	A-12 Totals	154	\$27,519	\$28,250	60.9%	\$111.78	\$1,155	\$17,214	\$3,686	\$5,906	\$38	\$6,595	89.6%
	District 7750			\$100				\$0	\$0	\$610	\$0			
	Totals		2,634	\$340,476	\$319,935	73.2%	\$88.86	\$10,867	\$234,051	\$65,008	\$57,496	\$22	\$88,751	64.8%

Area Summary

		Mbrs as of 7-1-14	AF Actual 2013-14	AF Goal 2014-15	% of AF Goal Achieved 2014-15	AF Per Capita 2014-15	AF MONTH	AF YTD 2014-15	Polio Total 2013-2014	Polio YTD 2014-15	Polio Per Capita 2014-15	Polio Goal 2014-15	Polio % of Goal
AG Lance Young	Area 1	253	21,755	20,600	86.8%	\$70.71	\$4,660	\$17,890	\$4,215	\$5,989	\$24	\$9,900	60.5%
AG Steve Bahan	Area 2	133	12,855	13,674	58.2%	\$59.86	\$0	\$7,961	\$2,431	\$1,162	\$9	\$4,505	25.8%
AG Beth Padgett	Area 3	394	69,256	56,200	116.6%	\$166.37	\$210	\$65,550	\$7,294	\$6,577	\$17	\$6,200	106.1%
AG Franca Meloncelli	Area 4	263	21,231	19,300	33.8%	\$24.77	\$170	\$6,515	\$14,143	\$9,797	\$37	\$11,850	82.7%
AG Gene Moorhead	Area 5	133	14,188	18,575	59.3%	\$82.76	\$1,516	\$11,007	\$4,784	\$3,569	\$27	\$5,465	65.3%
AG Chad Bordeaux	Area 6	237	36,756	27,587	86.4%	\$100.59	\$786	\$23,839	\$685	\$4,288	\$18	\$4,450	96.4%
AG Mary Sieck	Area 7	234	9,086	26,109	25.7%	\$28.72	\$10	\$6,720	\$1,965	\$400	\$2	\$8,936	4.5%
AG Liz Stewart	Area 8	260	42,709	39,656	56.7%	\$86.46	\$210	\$22,480	\$12,221	\$7,878	\$30	\$13,050	60.4%
AG Andrew Hodges	Area 9	241	47,284	29,267	69.5%	\$84.39	\$925	\$20,338	\$7,322	\$4,480	\$19	\$6,350	70.6%
AG Buddy Smith	Area 10	196	25,685	23,800	110.0%	\$133.62	\$1,130	\$26,189	\$4,428	\$4,750	\$24	\$4,200	113.1%
AG Chuck Morton	Area 11	136	12,053	16,917	49.4%	\$61.39	\$95	\$8,349	\$1,225	\$2,700	\$20	\$7,250	37.2%
AG Ed Irick	Area 12	154	27,519	28,250	60.9%	\$111.78	\$1,155	\$17,214	\$3,686	\$5,906	\$38	\$6,595	89.6%
	Total	2,634	340,376	319,935	73.2%	\$88.86	\$10,867	\$234,051	\$64,398	\$57,496	\$22	\$88,751	

Top Giving Clubs (Annual Fund)

Top Clubs by % of AF Goal Achieved

1	Winnsboro	288%
2	Anderson	218%
3	Newberry	176%
4	Greater Greer	165%
5	Fort Mill	162%

Top Clubs by AF Per Capita

1	Greater Greer	\$404.88
2	Greenville Evening	\$333.97
3	Fort Mill	\$199.56
4	Greenville Breakfast	\$197.58
5	Greenville	\$184.55

Top Clubs by Total AF Giving

1	Greenville	\$49,829
2	Aiken	\$16,370
3	Fort Mill	\$15,366
4	Newberry	\$13,050
5	Greenville Evening	\$9,685

Top Giving Clubs (Polio)

Top Clubs by % of Polio Goal Achieved

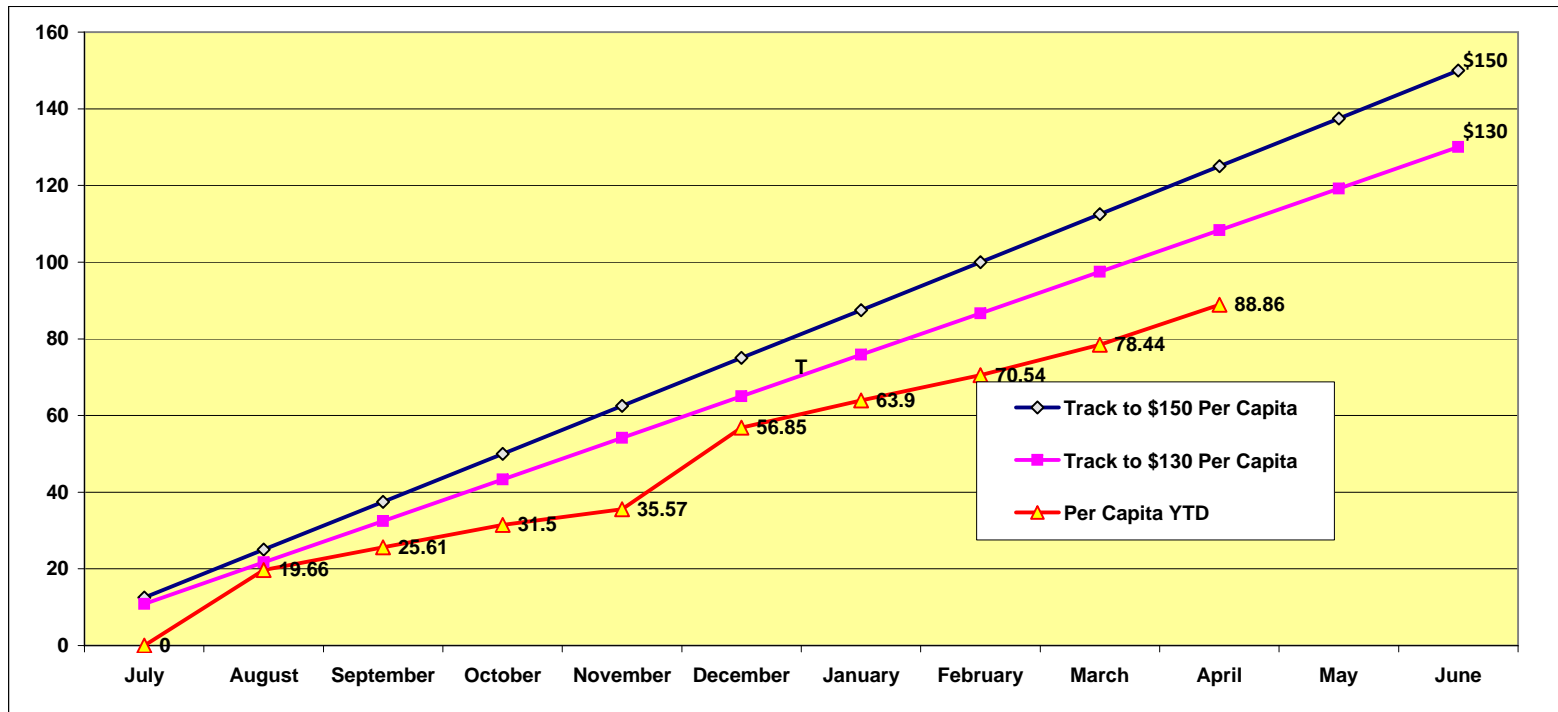
1	Walhalla	2400%
2	Pleasantburg	320%
3	North Spartanburg	260%
4	Winnsboro	184%
5	Spartan West	178%

Top Clubs by Total Polio Giving

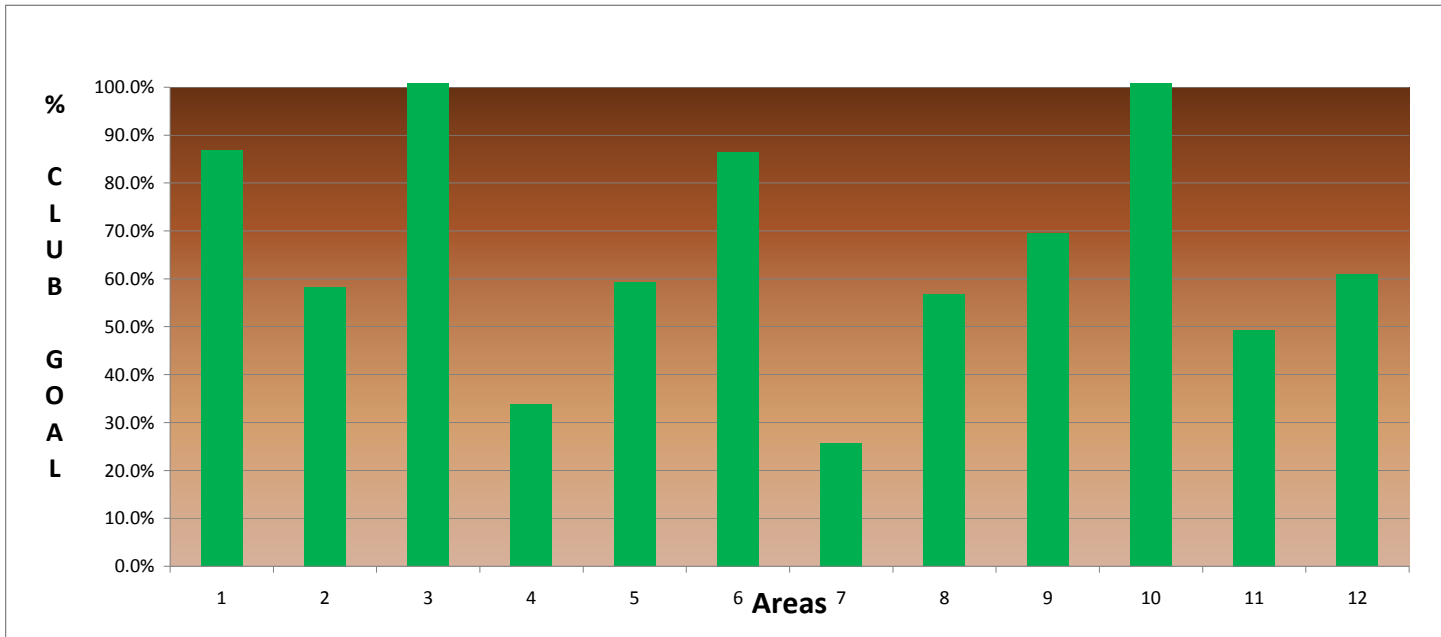
1	Spartanburg	\$7,784
2	Aiken	\$3,853
3	Pleasantburg	\$3,202
4	Aiken Sunrise	\$2,743
5	Greenville Evening	\$2,600

District Statistics

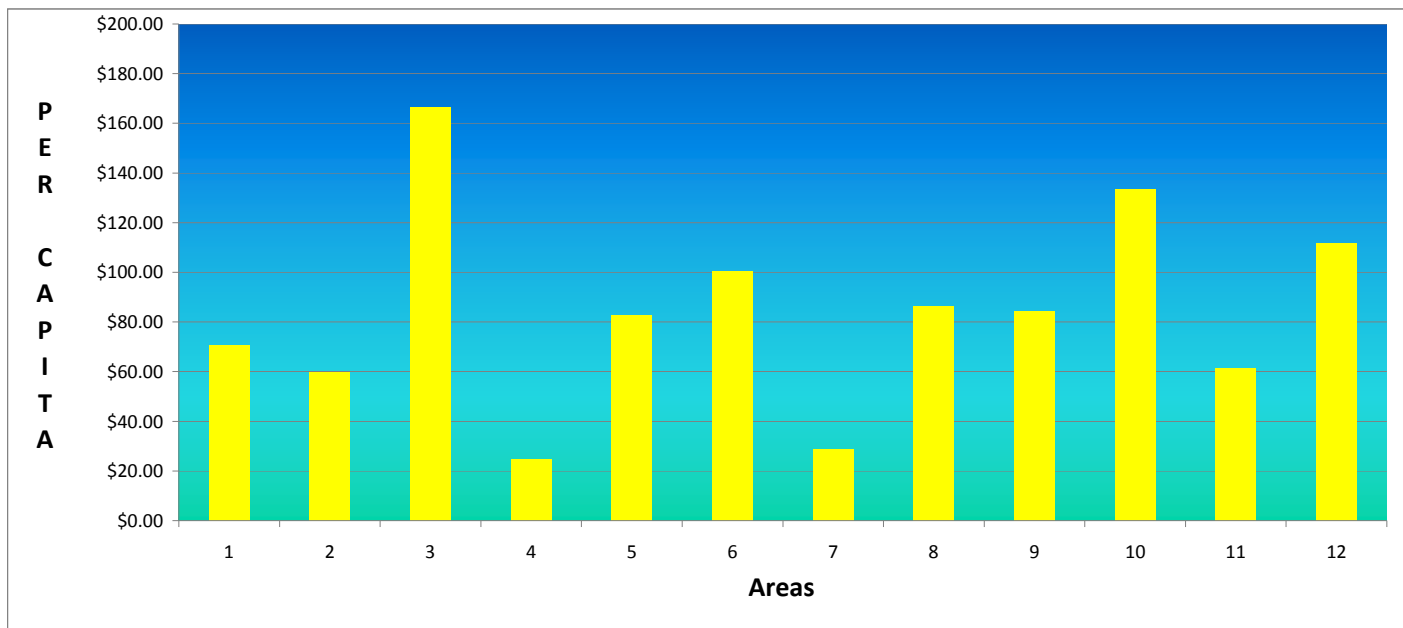
16 Clubs have achieved 100% of their AF Goal
20 Clubs have achieved 75% of their AF Goal
0 Clubs have achieved their AF Challenge Goal
25 Clubs have achieved 100% of their Polio Goal
9 Clubs are over \$150 AF Per Capita
18 Clubs are over \$100 AF Per Capita
0 Clubs have given \$5 Total to the AF (Zero Giving)
0 Clubs have given \$5 Total to Polio (Zero Giving)
2 Areas have achieved 100% of their AF Goal
4 Areas have achieved 75% of their AF Goal
0 Areas have achieved their total AF Challenge Goal
0 Areas are over \$200 AF Per Capita
4 Areas are over \$100 AF Per Capita



% of Club AF Goal Achieved - By Area



AF Per Capita - By Area **Goal is \$150**



All Clubs Ranked by % of AF Goal Achieved

1	Winnsboro	288%
2	Anderson	218%
3	Newberry	176%
4	Greater Greer	165%
5	Fort Mill	162%
6	Pleasantburg	132%
7	Seneca	120%
8	Mauldin	120%
9	North Greenville	119%
10	Greenville	119%
11	Emerald City	118%
12	York	118%
13	Clemson-Calhoun	113%
14	Greenville Breakfast	113%
15	Clinton	112%
16	Greenwood	101%
17	Woodruff	95%
18	Twin City of Batesburg-Leesville	88%
19	Union	81%
20	Greenville Evening	81%
21	North Spartanburg	72%
22	Greenville East	71%
23	Fair Play	67%
24	Lake Wylie	66%
25	Aiken	64%
26	Laurens	63%
27	The Foothills	62%
28	Clemson	62%
29	Aiken Sunrise	60%
30	Gaffney	60%

All Clubs Ranked by % of Polio Goal Achieved

1	Walhalla	2400%
2	Pleasantburg	320%
3	North Spartanburg	260%
4	Winnsboro	184%
5	Spartan West	178%
6	Fort Mill	175%
7	Greenville Evening	173%
8	EClub of the Carolinas	156%
9	Aiken Sunrise	137%
10	Anderson	137%
11	Lake Wylie	136%
12	Greenwood	135%
13	Union	135%
14	Greater Greer	124%
15	Clemson-Calhoun	118%
16	Rock Hill	114%
17	Emerald City	110%
18	Newberry	110%
19	Pickens	107%
20	Laurens	105%
21	Gaffney	100%
22	Twin City of Batesburg-Leesville	100%
23	Clinton	100%
24	Simpsonville	100%
25	Greenville	98%
26	Spartanburg	78%
27	York	74%
28	Batesburg-Leesville	74%
29	Greenville East	62%
30	Clover	61%

31	EClub of the Carolinas	58%
32	Simpsonville	58%
33	Inman	58%
34	Chester	52%
35	Rock Hill	49%
36	Westminster	45%
37	Greater Anderson	45%
38	Clover	37%
39	Pickens	35%
40	Indian Land	31%
41	Walhalla	30%
42	Golden Strip Sunrise	27%
43	McCormick County	25%
44	Seneca Golden Corner	21%
45	Spartan West	17%
46	Spartanburg	17%
47	Lancaster	16%
48	Abbeville	12%
49	North Augusta	9%
50	Blacksburg	1%
51	Batesburg-Leesville	0%
52	Fountain Inn	0%
53	Easley	0%
54	Lancaster Breakfast	0%

31	Greater Anderson	60%
32	Mauldin	54%
33	Seneca	50%
34	Aiken	45%
35	Clemson	28%
36	Indian Land	18%
37	Westminster	17%
38	Chester	10%
39	Seneca Golden Corner	9%
40		0%
41		0%
42		0%
43		0%
44		0%
45		0%
46		0%
47		0%
48		0%
49		0%
50		0%
51		0%
52		0%
53		0%
54		0%

All Clubs Ranked by AF Per Capita

1	Greater Greer	\$404.88
2	Greenville Evening	\$333.97
3	Fort Mill	\$199.56
4	Greenville Breakfast	\$197.58
5	Greenville	\$184.55
6	York	\$182.26
7	Emerald City	\$181.88
8	Newberry	\$181.25
9	Mauldin	\$150.60
10	Pleasantburg	\$139.21
11	EClub of the Carolinas	\$135.37
12	Twin City of Batesburg-Leesville	\$131.93
13	Seneca	\$124.58
14	Union	\$121.14
15	Clover	\$120.08
16	Clemson-Calhoun	\$117.92
17	Clinton	\$115.75
18	North Greenville	\$104.71
19	Aiken Sunrise	\$96.74
20	Aiken	\$95.17
21	Inman	\$95.00
22	Winnsboro	\$91.71
23	Laurens	\$85.52
24	Anderson	\$83.19
25	Simpsonville	\$78.65
26	Greenville East	\$76.04
27	Clemson	\$66.36
28	Lake Wylie	\$66.19
29	The Foothills	\$62.13
30	North Spartanburg	\$58.33
31	Greenwood	\$56.49
32	Pickens	\$52.04
33	Rock Hill	\$51.58

All Clubs Ranked by Polio Per Capita

1	Greater Greer	\$101.55
2	Clover	\$94.46
3	Greenville Evening	\$89.66
4	Pleasantburg	\$84.26
5	EClub of the Carolinas	\$75.19
6	Clemson-Calhoun	\$73.75
7	Aiken Sunrise	\$68.56
8	Pickens	\$53.40
9	Simpsonville	\$45.45
10	Laurens	\$43.75
11	Spartanburg	\$43.49
12	Batesburg-Leesville	\$43.44
13	Twin City of Batesburg-Leesville	\$33.33
14	Greenville East	\$33.04
15	Spartan West	\$32.40
16	North Spartanburg	\$30.95
17	York	\$30.70
18	Union	\$30.68
19	Mauldin	\$26.92
20	Greater Anderson	\$25.86
21	Fort Mill	\$22.73
22	Aiken	\$22.40
23	Seneca	\$21.90
24	Emerald City	\$21.15
25	Lake Wylie	\$20.07
26	Anderson	\$17.11
27	Rock Hill	\$16.78
28	Newberry	\$15.28
29	Clemson	\$14.84
30	Greenwood	\$12.98
31	Indian Land	\$9.19
32	Greenville	\$9.07
33	Winnsboro	\$6.58

34	Westminster	\$50.32
35	McCormick County	\$50.00
36	Indian Land	\$45.97
37	Fair Play	\$45.00
38	Greater Anderson	\$40.80
39	Woodruff	\$37.50
40	Walhalla	\$31.45
41	Chester	\$31.00
42	Gaffney	\$30.49
43	Golden Strip Sunrise	\$28.57
44	Seneca Golden Corner	\$23.41
45	Lancaster	\$23.26
46	Spartan West	\$20.45
47	Abbeville	\$18.37
48	North Augusta	\$16.73
49	Spartanburg	\$9.58
50	Blacksburg	\$0.77
51	Batesburg-Leesville	\$0.56
52	Fountain Inn	\$0.27
53	Easley	\$0.17
54	Lancaster Breakfast	\$0.14

34	Westminster	\$6.45
35	Clinton	\$6.25
36	Seneca Golden Corner	\$4.41
37	Walhalla	\$3.87
38	Chester	\$3.00
39	Gaffney	\$1.64
40		\$0.00
41		\$0.00
42		\$0.00
43		\$0.00
44		\$0.00
45		\$0.00
46		\$0.00
47		\$0.00
48		\$0.00
49		\$0.00
50		\$0.00
51		\$0.00
52		\$0.00
53		\$0.00
54		\$0.00

All Clubs Ranked by Total AF Giving

1	Greenville	\$49,829
2	Aiken	\$16,370
3	Fort Mill	\$15,366
4	Newberry	\$13,050
5	Greenville Evening	\$9,685
6	Emerald City	\$9,458
7	Anderson	\$6,655
8	Clemson	\$6,039
9	York	\$6,015
10	Greenwood	\$5,875
11	Union	\$5,330
12	Pleasantburg	\$5,290
13	Rock Hill	\$5,261
14	Greenville Breakfast	\$4,742
15	Greater Greer	\$4,454
16	Seneca	\$4,236
17	Laurens	\$4,105
18	Mauldin	\$3,916
19	Aiken Sunrise	\$3,870
20	Clinton	\$3,704
21	EClub of the Carolinas	\$3,655
22	North Greenville	\$3,560
23	Winnsboro	\$3,485
24	Simpsonville	\$3,461
25	Clover	\$3,122
26	Clemson-Calhoun	\$2,830
27	North Spartanburg	\$2,450
28	Greater Anderson	\$2,366
29	Pickens	\$2,134
30	Greenville East	\$2,129
31	Twin City of Batesburg-Leesville	\$1,979
32	Inman	\$1,900

All Clubs Ranked by Total Polio Giving

1	Spartanburg	\$7,784
2	Aiken	\$3,853
3	Pleasantburg	\$3,202
4	Aiken Sunrise	\$2,743
5	Greenville Evening	\$2,600
6	Clover	\$2,456
7	Greenville	\$2,450
8	Pickens	\$2,189
9	Laurens	\$2,100
10	EClub of the Carolinas	\$2,030
11	Simpsonville	\$2,000
12	Clemson-Calhoun	\$1,770
13	Fort Mill	\$1,750
14	Rock Hill	\$1,711
15	Greater Anderson	\$1,500
16	Anderson	\$1,369
17	Clemson	\$1,350
18	Greenwood	\$1,350
19	Union	\$1,350
20	North Spartanburg	\$1,300
21	Greater Greer	\$1,117
22	Emerald City	\$1,100
23	Newberry	\$1,100
24	York	\$1,013
25	Greenville East	\$925
26	Batesburg-Leesville	\$782
27	Seneca	\$745
28	Spartan West	\$713
29	Mauldin	\$700
30	Lake Wylie	\$542
31	Twin City of Batesburg-Leesville	\$500
32	Indian Land	\$285

33	Gaffney	\$1,860
34	Lake Wylie	\$1,787
35	Spartanburg	\$1,715
36	Lancaster	\$1,675
37	Westminster	\$1,560
38	Chester	\$1,550
39	Indian Land	\$1,425
40	Walhalla	\$975
41	The Foothills	\$932
42	Abbeville	\$900
43	Fair Play	\$675
44	Woodruff	\$563
45	Seneca Golden Corner	\$515
46	Spartan West	\$450
47	McCormick County	\$450
48	Golden Strip Sunrise	\$400
49	North Augusta	\$251
50	Blacksburg	\$10
51	Lancaster Breakfast	\$10
52	Batesburg-Leesville	\$10
53	Fountain Inn	\$10

33	Winnsboro	\$250
34	Westminster	\$200
35	Clinton	\$200
36	Chester	\$150
37	Walhalla	\$120
38	Gaffney	\$100
39	Seneca Golden Corner	\$97
40		\$0
41		\$0
42		\$0
43		\$0
44		\$0
45		\$0
46		\$0
47		\$0
48		\$0
49		\$0
50		\$0
51		\$0
52		\$0
53		\$0

All Areas Ranked by % of AF Goal Achieved

1	AG Beth Padgett	Area 3	116.6%
2	AG Buddy Smith	Area 10	110.0%
3	AG Lance Young	Area 1	86.8%
4	AG Chad Bordeaux	Area 6	86.4%
5	AG Andrew Hodges	Area 9	69.5%
6	AG Ed Irick	Area 12	60.9%
7	AG Gene Moorhead	Area 5	59.3%
8	AG Steve Bahan	Area 2	58.2%
9	AG Liz Stewart	Area 8	56.7%
10	AG Chuck Morton	Area 11	49.4%
11	AG Franca Meloncell	Area 4	33.8%
12	AG Mary Sieck	Area 7	25.7%

All Areas Ranked by AF Per Capita

1	AG Beth Padgett	Area 3	\$166.37
2	AG Buddy Smith	Area 10	\$133.62
3	AG Ed Irick	Area 12	\$111.78
4	AG Chad Bordeaux	Area 6	\$100.59
5	AG Liz Stewart	Area 8	\$86.46
6	AG Andrew Hodges	Area 9	\$84.39
7	AG Gene Moorhead	Area 5	\$82.76
8	AG Lance Young	Area 1	\$70.71
9	AG Chuck Morton	Area 11	\$61.39
10	AG Steve Bahan	Area 2	\$59.86
11	AG Mary Sieck	Area 7	\$28.72
12	AG Franca Meloncell	Area 4	\$24.77

All Areas Ranked by Total AF Giving

1	AG Beth Padgett	Area 3	\$65,550
2	AG Buddy Smith	Area 10	\$26,189
3	AG Chad Bordeaux	Area 6	\$23,839
4	AG Liz Stewart	Area 8	\$22,480
5	AG Andrew Hodges	Area 9	\$20,338
6	AG Lance Young	Area 1	\$17,890
7	AG Ed Irick	Area 12	\$17,214
8	AG Gene Moorhead	Area 5	\$11,007
9	AG Chuck Morton	Area 11	\$8,349
10	AG Steve Bahan	Area 2	\$7,961
11	AG Mary Sieck	Area 7	\$6,720
12	AG Franca Meloncell	Area 4	\$6,515